

Mini R56 Cooper S De-Cat Downpipe Fitting Instructions

Tools Required:

- Ratchet and Socket
- Lambda Sensor Socket
- 6mm Allen Key

Kit Contents:

- 1x AIRTEC Motorsport De-Cat Downpipe
- 1x Mounting bracket
- 1x M8x20mm Allen Key Bolt
- 1x M8 Penny Washer



AIRTEC 
M O T O R S P O R T

PLEASE THOROUGHLY READ THESE INSTRUCTIONS AND MAKE SURE YOU ARE FAMILIAR
WITH THE STEPS BEFORE CARRYING THEM OUT

AIRTEC 
M O T O R S P O R T

Instructions:

1. Start by working under the car, remove the lower lambda sensor using a specific lambda socket or a 22mm spanner. Then undo the exhaust clamp using a 15mm socket.



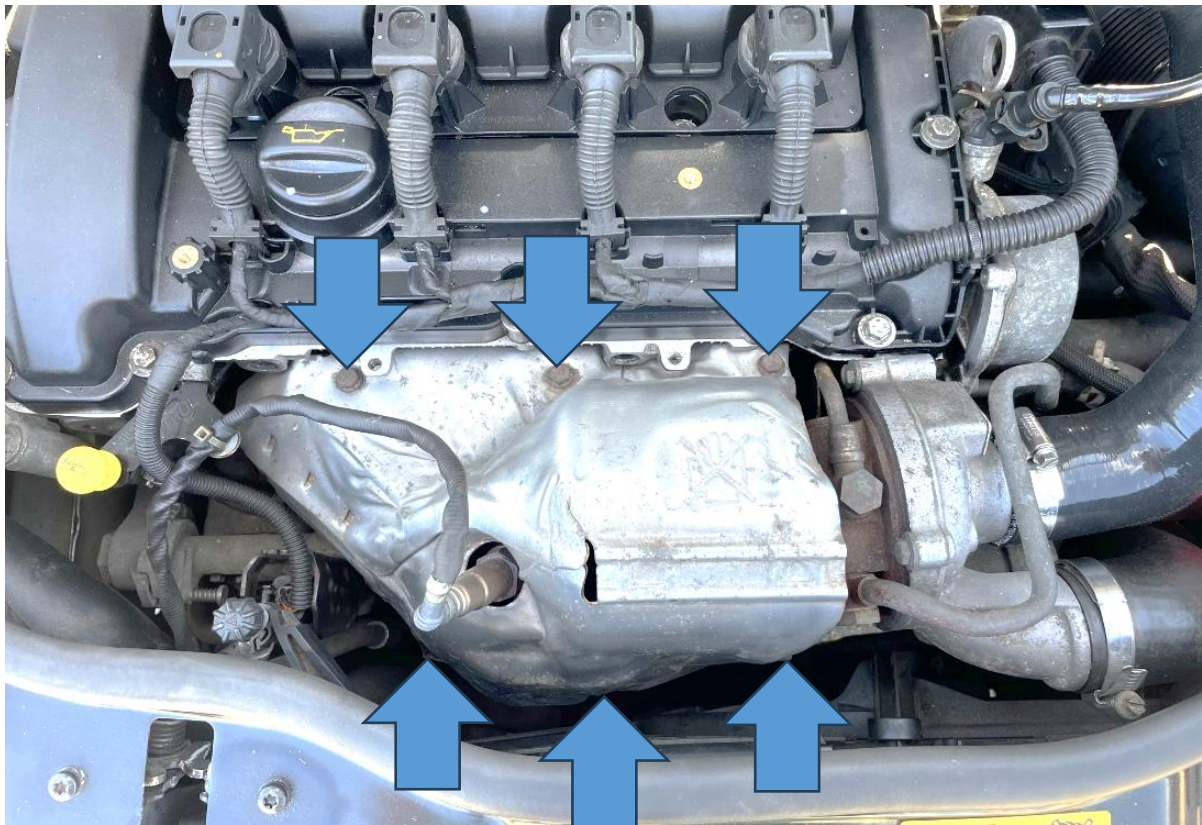
2. Undo the two 13mm nuts holding the downpipe brackets attached to the engine (blue arrows) and then remove. If there is not enough movement to free the downpipe, undo the 13mm nut attached to the bracket that was holding the left-hand downpipe bracket.



3. Working in the engine bay, now remove the top lambda sensor from the manifold.



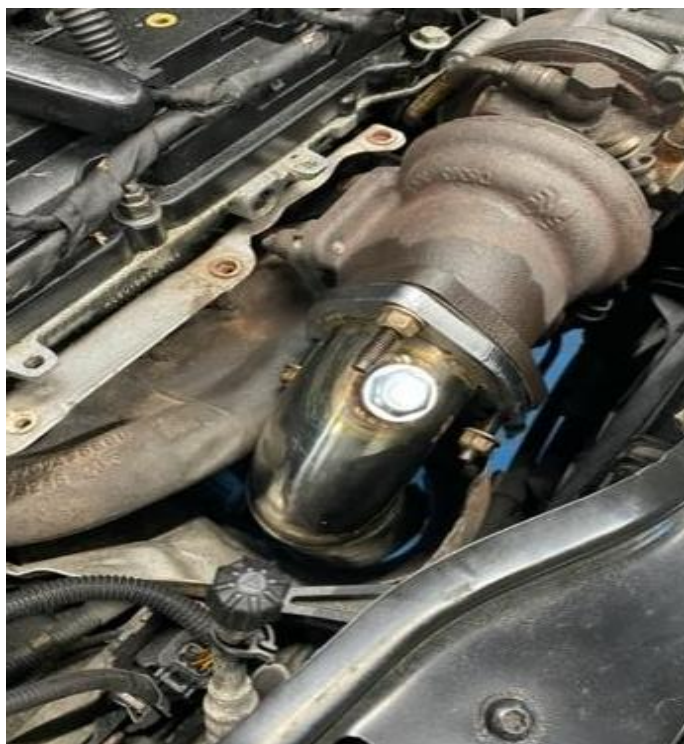
4. Undo the three 10mm bolts holding the top of the heat shield to the manifold, followed by the three bolts lower bolts together. You can then remove the upper heat shield from the engine bay.



5. Remove the three 13mm nuts securing the downpipe to the turbo. You will also need to remove the three studs (highlighted with blue arrows), which you can do by tightening two nuts together on each stud and using the nut closest to the downpipe to unwind the stud.



6. Install your new AIRTEC Motorsport downpipe from the top of the engine bay. Line up the three holes to the turbo and re-install the studs removed using the same method in reverse. Secure in place using the original 13mm nuts. **Ensure to re-install the original gasket between the turbo and the downpipe.**



7. Re-install the exhaust clamp and then install the AIRTEC Motorsport mounting bracket using the 13mm nut removed in Step 2 (blue arrow). Align the bracket's slot to the side of the downpipe and install using the bolt and washer supplied.



8. Finally re-install the lambda sensors and heat shield in reverse of removal. Then check everything has been tightened correctly.

