

# Ford Focus RS Mk2 Under Tray Fitting Instructions

## Tools Required:

- Ratchet and Socket Set
- T30 Torx Socket
- 5mm Allen Key
- Drill
- 12.5mm Drill bit

## Kit Contents:

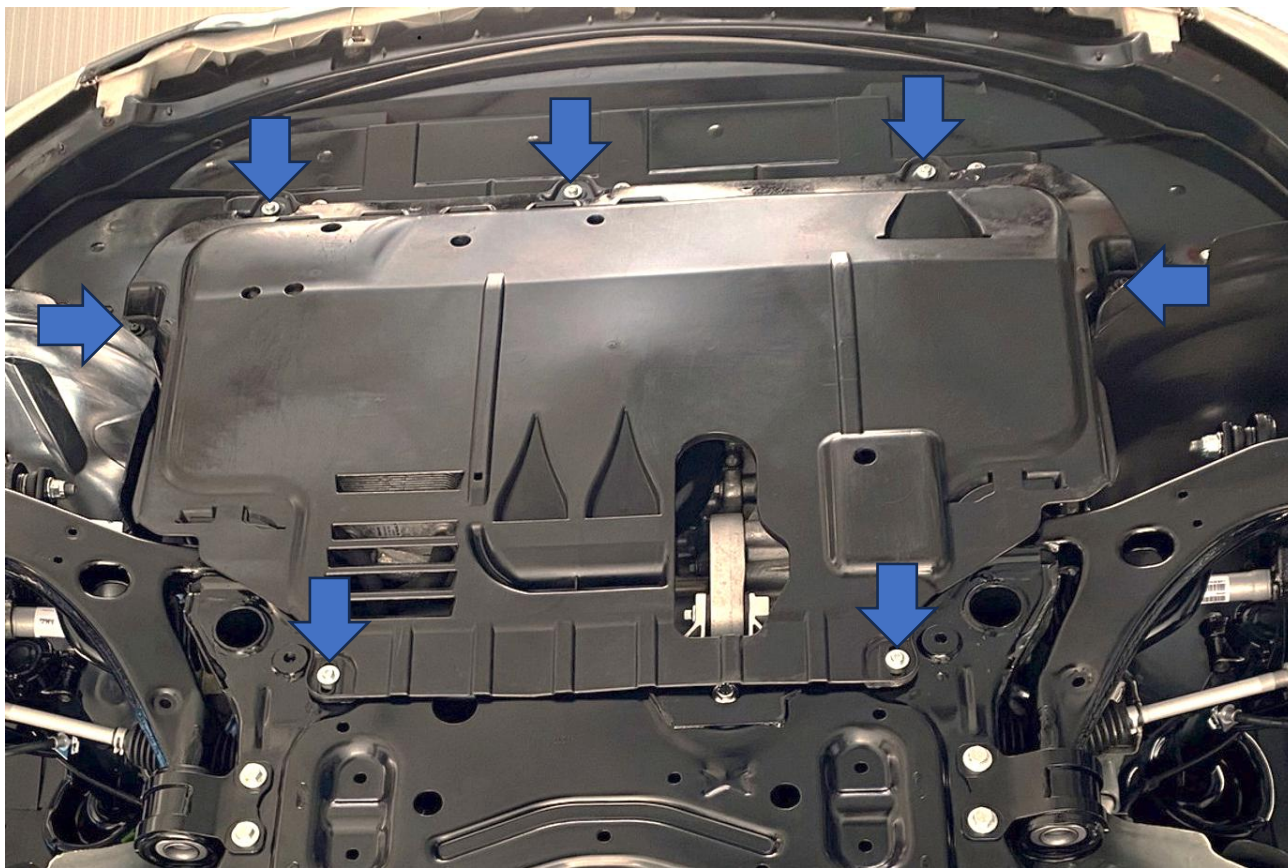
- 1x AIRTEC Motorsport Under Tray
- 2x M6 Rubber Riv-Nuts
- 2x M6x35mm Socket Head Bolts
- 2x M6 Washers



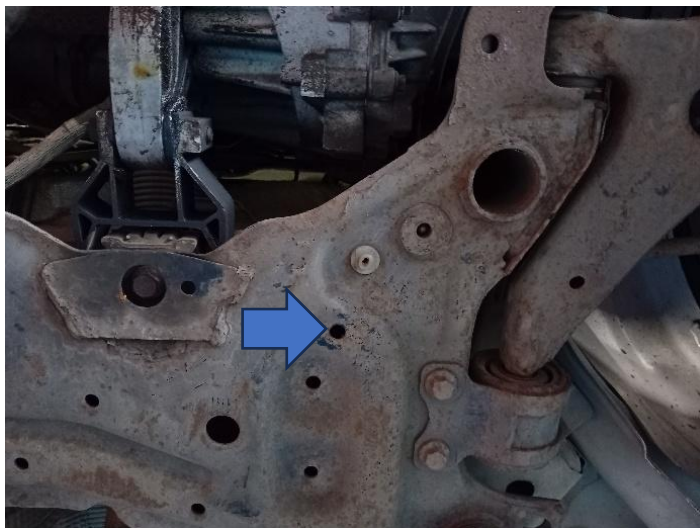
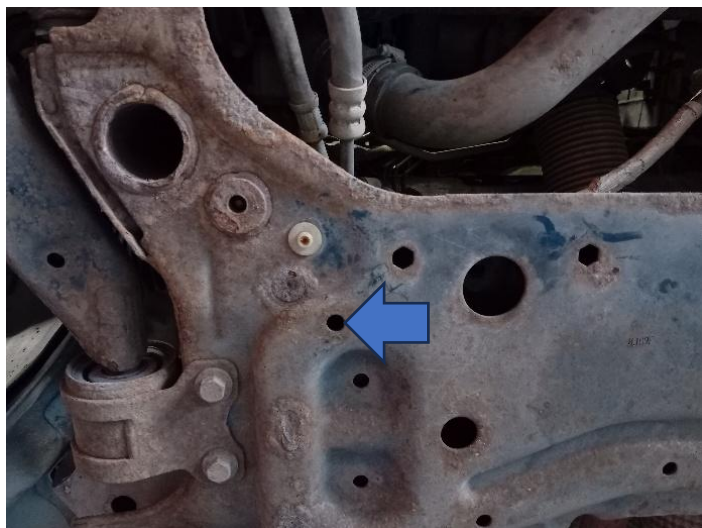
PLEASE THOROUGHLY READ THESE INSTRUCTIONS AND MAKE SURE YOU ARE FAMILIAR  
WITH THE STEPS BEFORE CARRYING THEM OUT

# Instructions:

1. Under the car, remove the six screws securing the under tray in place and then pull it forwards to release it from the hooks at the rear and remove.



2. Locate the two holes highlighted on the subframe and use a 12.5mm drill bit to enlarge the holes.





3. Insert the supplied rubber Riv Nuts into the holes.



4. Remove the three T30 Torx screws holding the plastic bumper trim to the car.



5. To fit the AIRTEC Motorsport undertray, slide the plastic bumper trim between the mounting feet and the front lip of the tray. To locate the mounting hooks at the rear of the tray, slide the tray slightly towards the edge of the car, raise the rear, then slide the tray back into its central position. This must be done on both the driver's side and passenger side.



6. To secure the rear of the under tray, insert the supplied M6x35mm bolts with washers into each of the rubber Riv Nuts (blue arrows) fitted in Step 3 and tighten using a 5mm hex Allen key. Then refit the two original screws removed in Step 1 (orange arrows).





7. Finally, to secure the front refit the three T30 screws removed in Step 4, which will now help support the under tray. You can then refit the remaining five original screws removed in Step 1.

