

Renault Clio RS 197/200 Induction Kit Fitting Instructions

Tools Required:

- 10mm Spanner
- 13mm Socket and Ratchet
- 5mm Allen Key

Kit Contents:

- 1x AIRTEC Motorsport Air Filter
- 1x CNC Adaptor
- 1x Pro Hoses Induction Hose
- 1x Air Box Base Plate
- 1x Air Box Front Plate
- 1x Air Box Rear Plate
- 1x Air Box Lid
- 1x Mounting Bracket
- 1x Aluminium Locating Pin
- 2x Jubilee Clips
- 15x Plastic Push Fittings
- 3x M6 Allen Bolts
- 3x M6 Washers
- 1x Vacuum Pipe Blanking Cap



PLEASE THOROUGHLY READ THESE INSTRUCTIONS AND MAKE SURE YOU ARE FAMILIAR WITH THE STEPS BEFORE CARRYING THEM OUT

Instructions:

1. Remove the battery cover and disconnect the top and side hoses from the air box (blue arrows). You will also need to disconnect the vacuum hose (orange arrow).



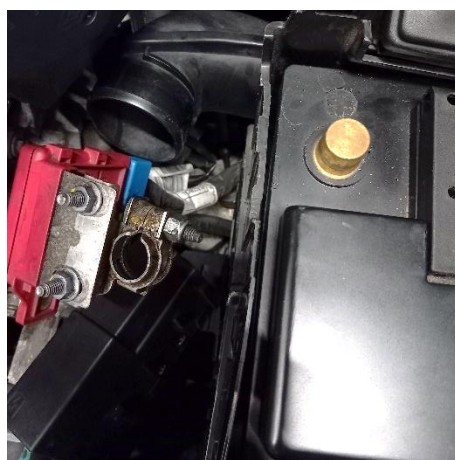
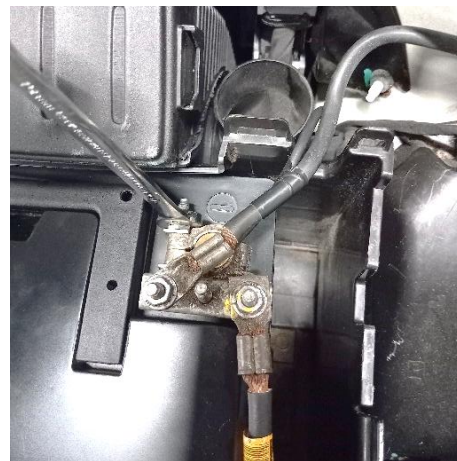
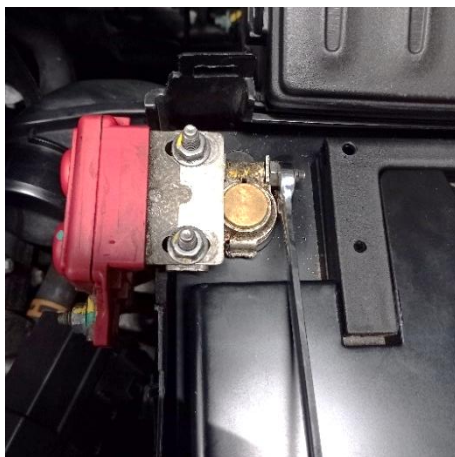
2. Unclip the plastic front air feed from the panel behind the bumper. Gently manipulate the rear of the plastic feed out of the rubber pipe and pull the pipe upwards to detach it from the vehicle.



3. Detach the rubber section of the air feed off the original airbox. This has an additional hose on the underside; to remove the pipe, lift it up and guide the hose out of the gap.



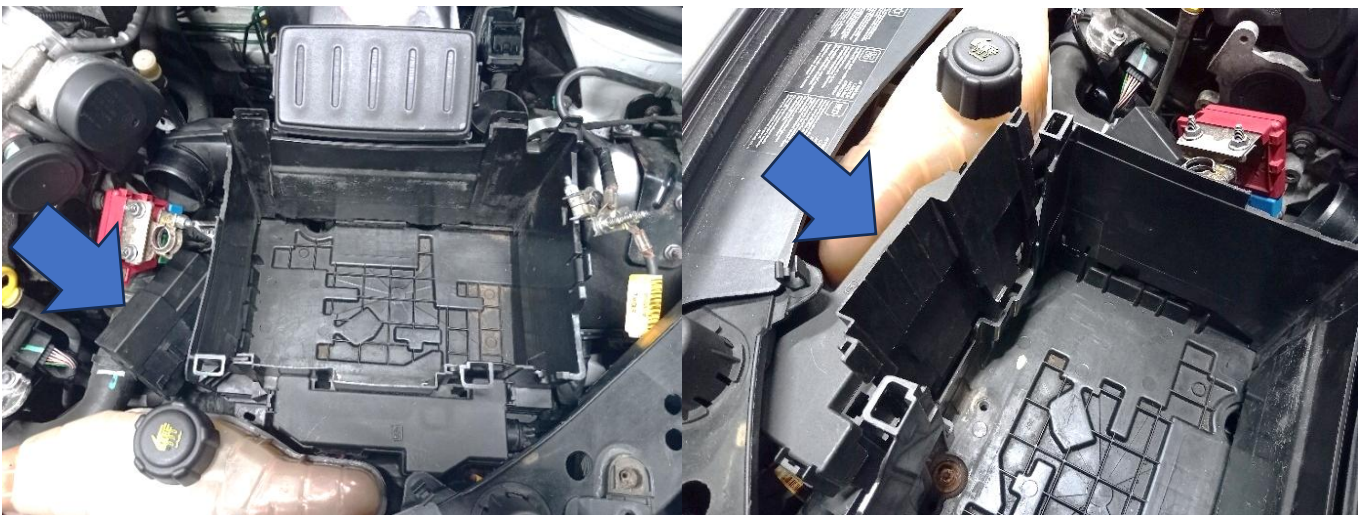
4. Loosen both battery terminals using a 10mm spanner and carefully lift the connectors off the terminals.



5. Remove the securing bracket at the front of the battery tray using a 13mm socket. Then lift the battery out of the vehicle.



6. Unclip and remove both the boxes mounted on the front and side of the battery tray.



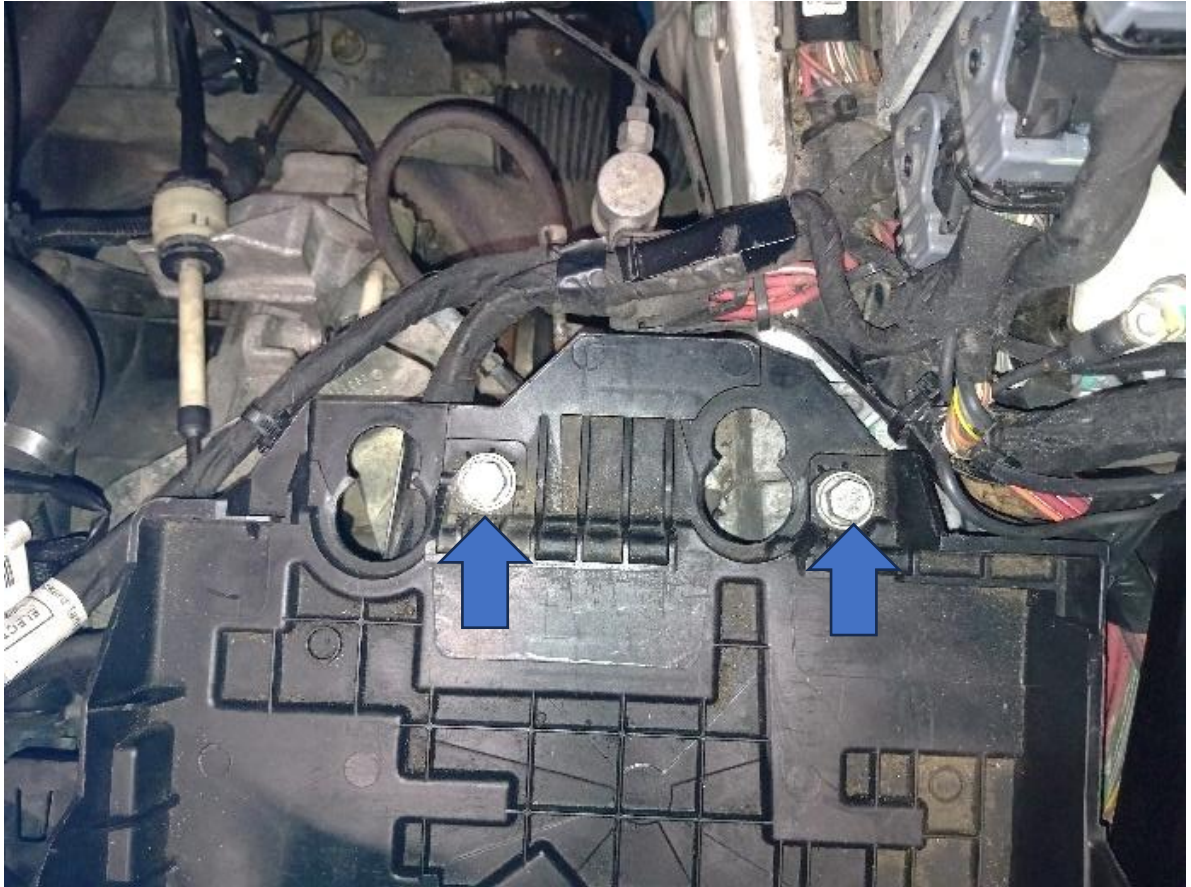
7. Unclip the plastic clips on either side of the battery housing and remove.



8. Pull the air box forward to release the rubber grommets and then remove it from the vehicle.



9. Remove the two 13mm bolts securing the battery tray to the vehicle.



10. Assemble the induction shield by fitting the back piece to the bottom piece as shown using five of the plastic push fittings provided.



11. Now fit the front section using two more plastic push fittings. Then use two of the bolts and washers provided to attach the mounting bracket to the rear (blue arrow).



12. Attach the supplied aluminium locating pin onto the mounting bracket using the remaining bolt and washer, as shown.



13. Fit the new air box to the car reusing the two 13mm bolts removed in Step 9. Ensure that the aluminium locating pin fits properly into the rubber grommet at the back of the engine bay (orange arrow).



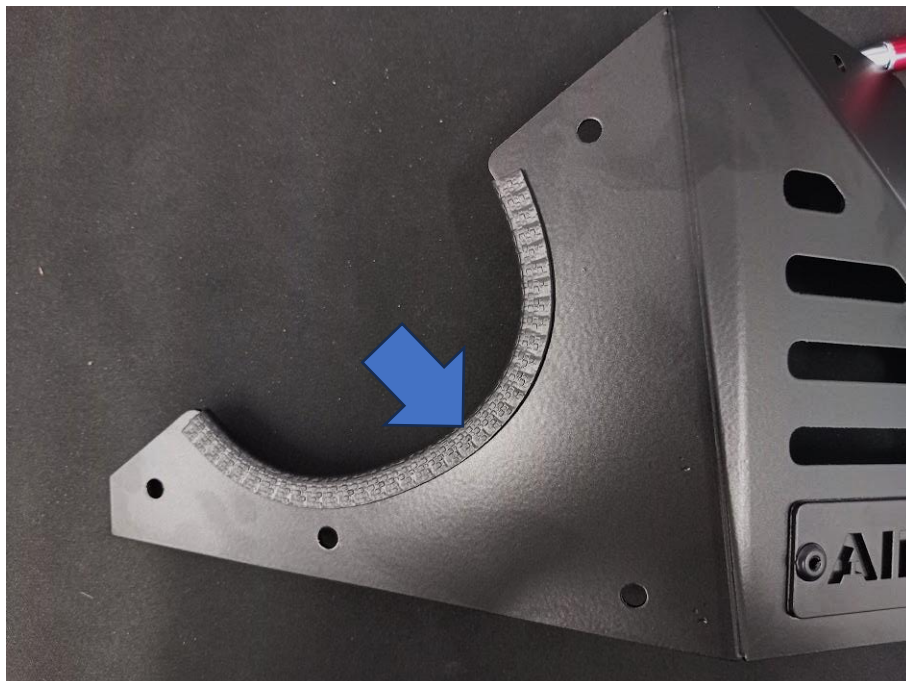
14. Attach the Pro Hoses induction hose and air filter to the aluminium joiner, as shown. Secure using the jubilee clips provided.



15. Now fit the induction hose to the throttle body securing with a jubilee clip provided. Ensure that the filter is in the correct position to slot into the air box.



16. Attach the rubber trim to the air box lid, as shown.



17. Then secure the lid to the air box using the remaining plastic push fittings provided. Then fit the supplied vacuum pipe blanking cap over the nipple on the throttle body left from removing the vacuum line in Step 1 (blue arrow)



18. Finally, refit the battery and the front air feed in reverse of removal and check everything is secured.

