

Honda Civic FK8 Type R Intercooler Fitting Instructions

Tools Required:

- Ratchet and Socket Set
- Trim Tool
- Phillips Screwdriver
- Pick Tool

Kit Contents:

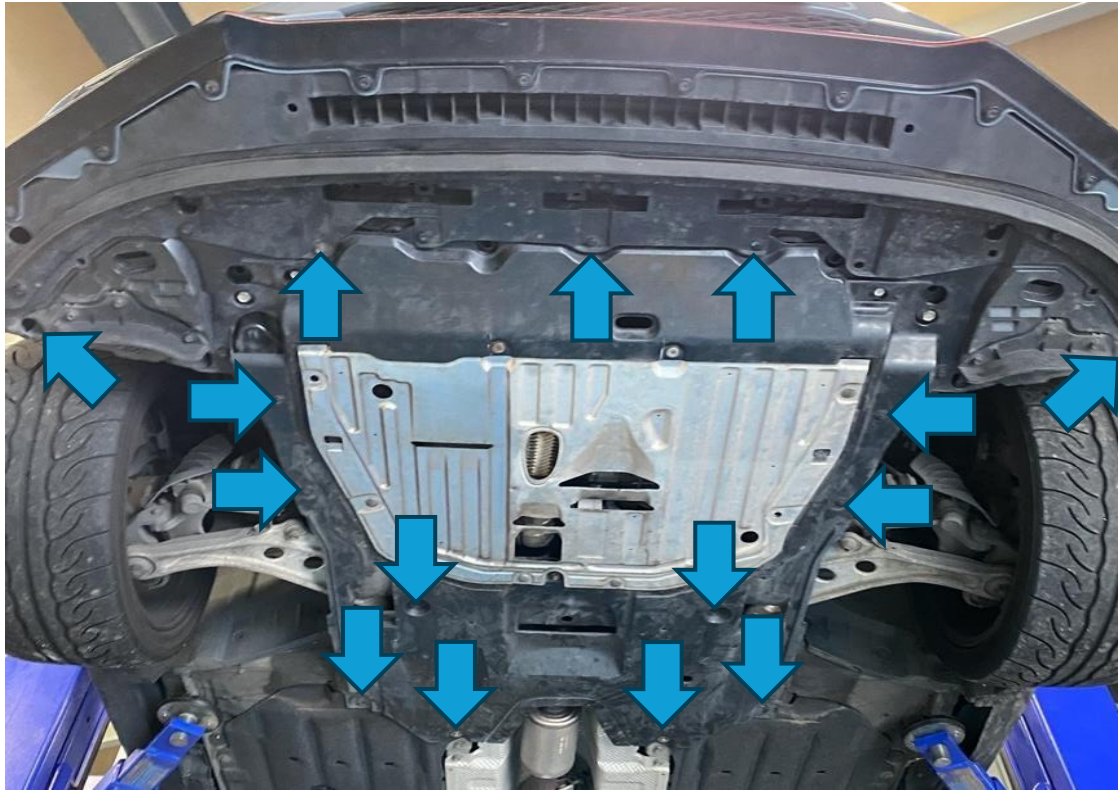
- 1x AIRTEC Motorsport Intercooler
- 1x AIRTEC Motorsport Aluminium Pipe
- 3x Pro Hoses Silicone Connectors
- 6x Stainless-Steel Jubilee Clips



PLEASE THOROUGHLY READ THESE INSTRUCTIONS AND MAKE SURE YOU ARE FAMILIAR WITH THE STEPS BEFORE CARRYING THEM OUT

Instructions

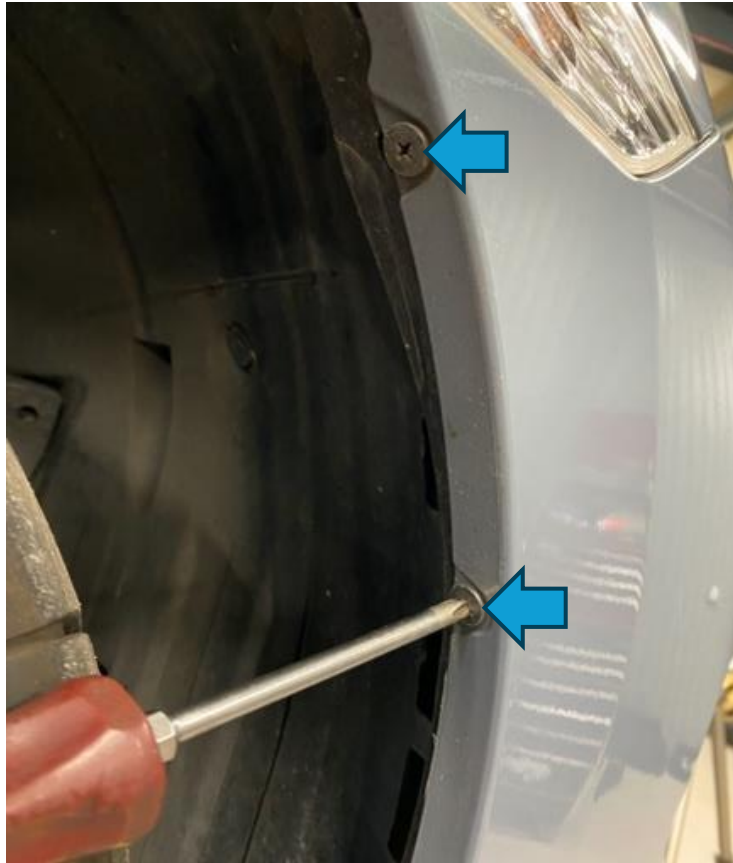
1. Firstly, release the under tray by removing the fixings highlighted. There are two more trim clips in each wheel arch that also need to be removed.



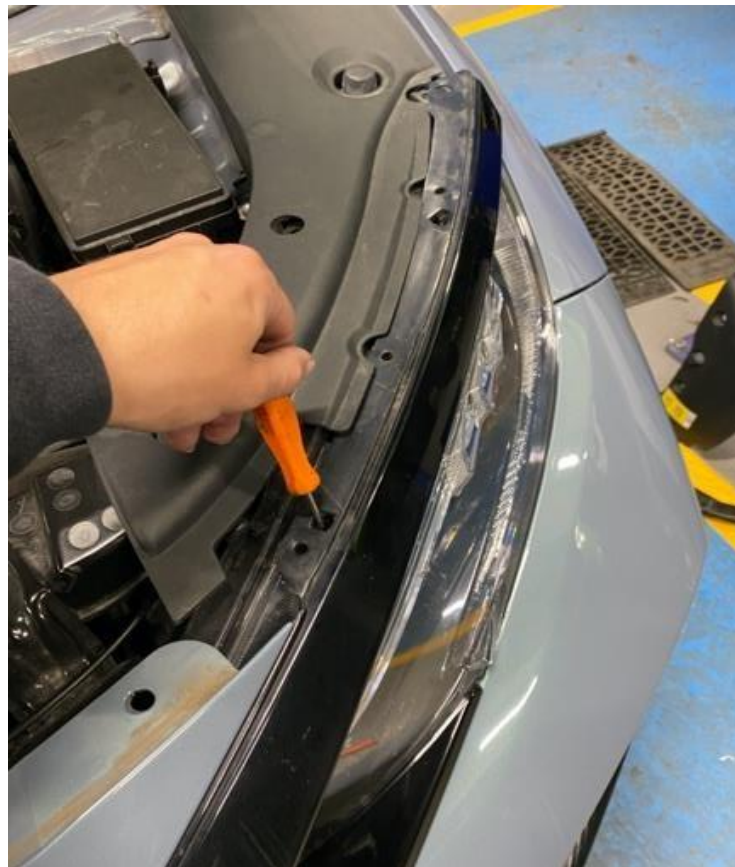
2. Release the slam panel by removing the 10 clips holding on the rubber seal (blue arrows) and then removing before remove the other 10 clips securing the panel itself (orange arrows).



3. Now remove two Philips screws in each wheel arch that secures to the bumper. You can then then carefully but firmly pull the bumper away from the wing to release the bumper.



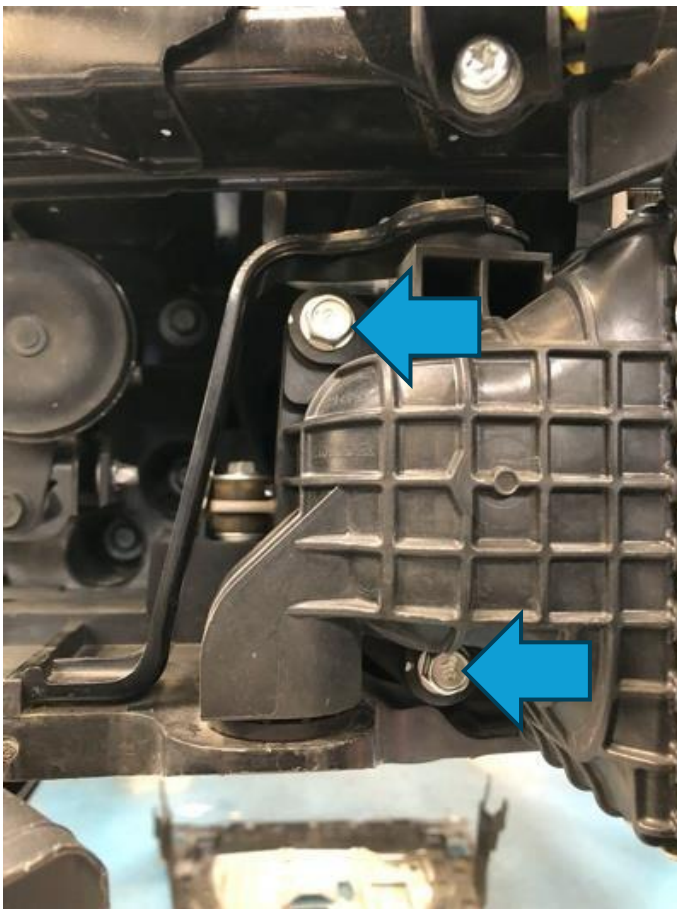
4. Release the two clips above each head light by inserting a pick tool inside the square gaps and pressing down.



5. The front bumper can now be removed after unplugging the wiring harness connections to both of the head lights.



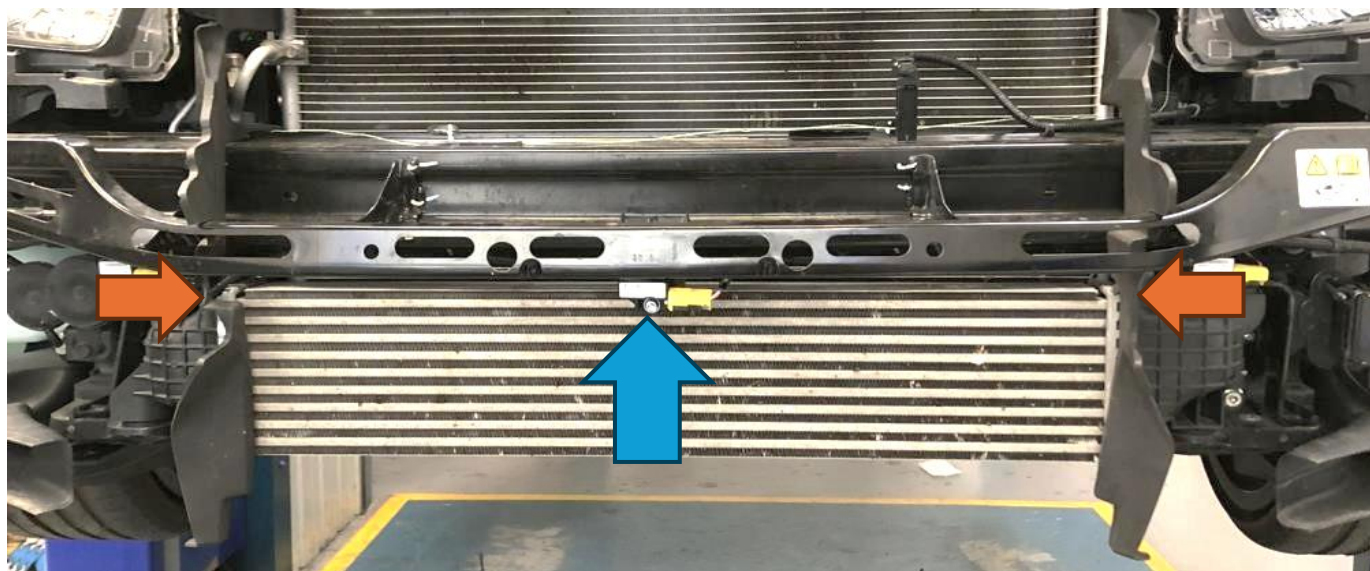
6. Undo the four 12mm bolts on the front of the intercooler followed by two 10mm bolts holding the mounting brackets. You can then remove the intercooler by lifting it out of the mounts.



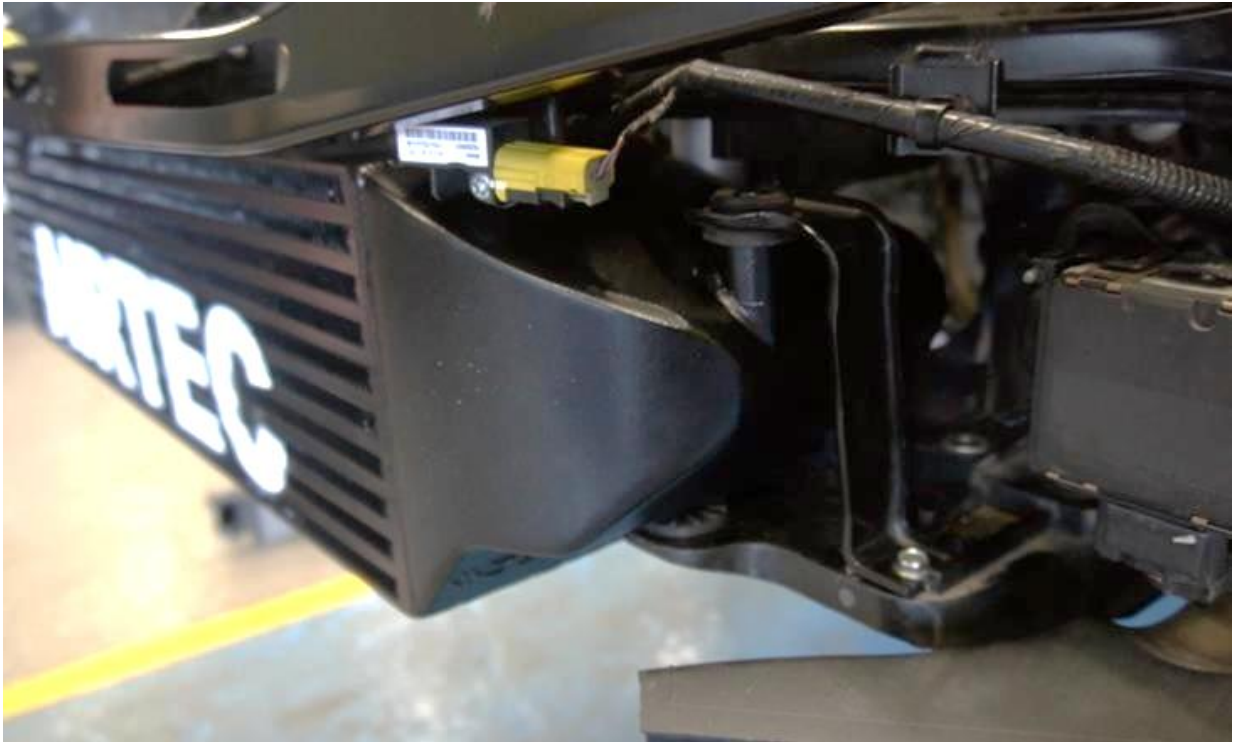
7. With the intercooler off, you will need to remove the original pipework and connections by releasing the 10mm bolt securing the connections on either side. Then loosen the jubilee clips to remove the pipework. In order to access the upper cold side jubilee clip, you will need to remove your original air box or induction kit.



8. In order to install your AIRTEC Motorsport intercooler, you will need to unbolt the central crash sensor (blue arrow) using a T27 Torx socket. Then carefully bend the bracket upwards away from the car. You will also need to trim the rubber air guides either side; we recommend cutting these with a pair of side cutters where they hang below the crash bar (orange arrows).



9. You can now install the AIRTEC Motorsport intercooler. To locate it, tilt the intercooler forward and position the bottom pins into the mounting holes before standing the intercooler up. Once upright you can then reinstall the original brackets and fixings. Bend the crash sensor back down and then and reinstall the sensor.



10. Once the intercooler is in place, you can install the supplied pipework, which directly replaces each part of the original pipework. Secure each hose in place using the jubilee clips provided.



11. Finally, check that everything is fully secured and tightened and then reinstall the bumper and undertray in reverse of removal.

