

Peugeot 208 GTi Induction Kit

Fitting Instructions

Tools Required:

- Ratchet and Socket Set
- Spanner Set
- Torx Socket Set
- Jubilee Clip Driver
- Trim Removal Tool
- Allen Key Set

Kit Contents:

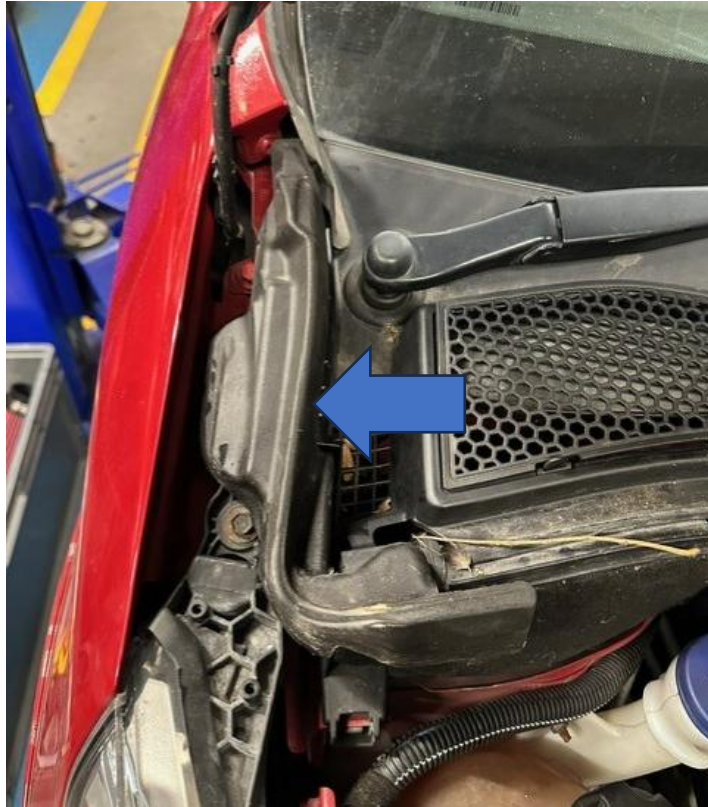
- 1x AIRTEC Motorsport Filter - CCTN-1215-70
- 1x Induction Shield Lid
- 1x MAF Housing Plate
- 1x Induction Hard Pipe
- 1x Induction Silicone Hose
- 3x Small Spacers
- 4x M6x16mm Button Head Bolts
- 6x M6 Small Washers
- 2x M6 Nyloc Nuts
- 2x 80mm Jubilee Clips



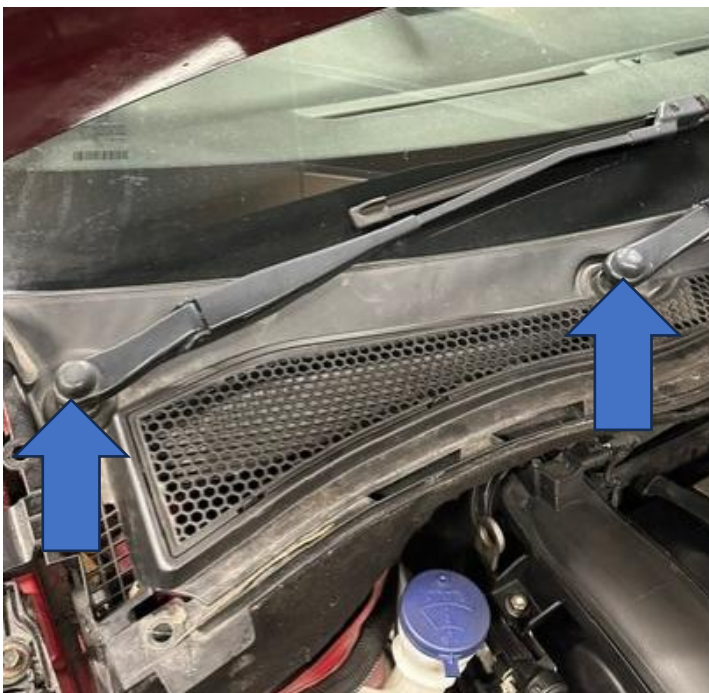
PLEASE THOROUGHLY READ THESE INSTRUCTIONS AND MAKE SURE YOU ARE FAMILIAR
WITH THE STEPS BEFORE CARRYING THEM OUT

Instructions:

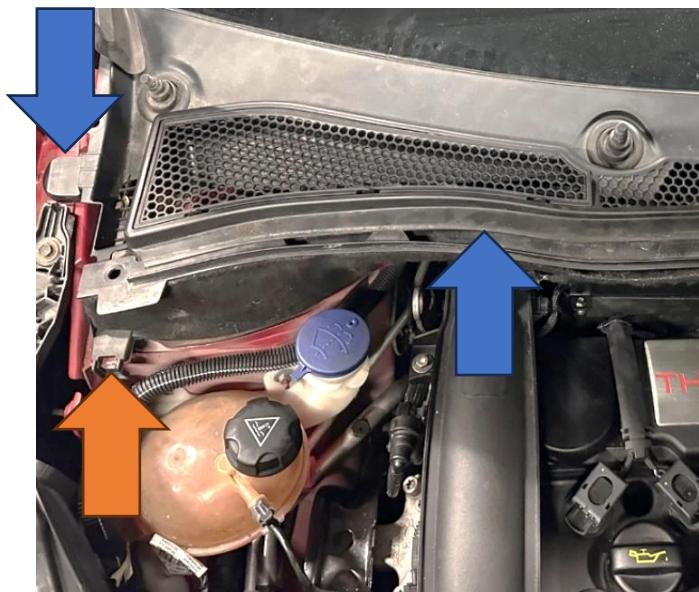
1. First, release the scuttle panel by removing the rubber/foam corner piece both sides. These are held in place with two small push fittings and should release with a small amount of force.



2. Remove the plastic caps from the wiper arms bolts with a small trim removal tool. Then use a 16mm socket to undo the nuts and pull the arms up to remove them from the splines.



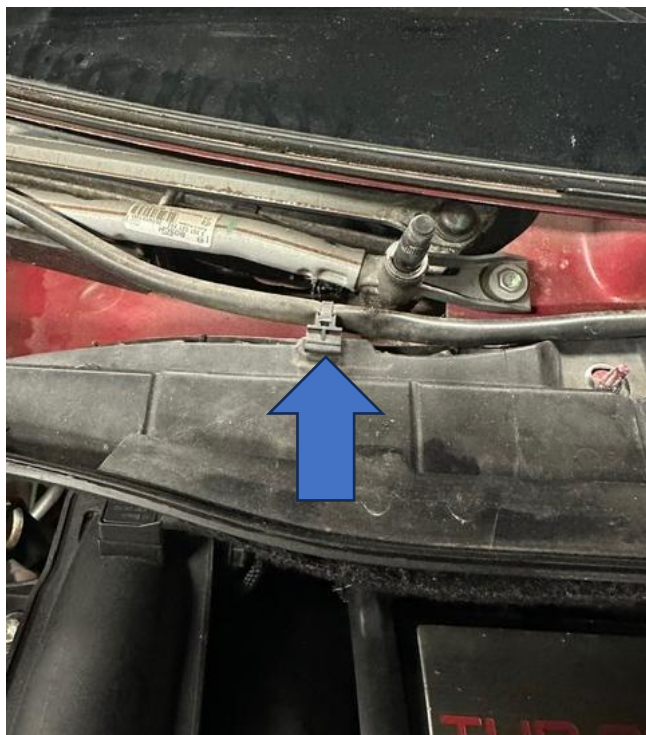
3. Each side of the scuttle panel is assembled in two parts. To remove it, first unclip the panel from the windscreen side and then unclip the lower section. Then pull it away from the windscreen and unhook from the engine panel (orange arrow).



4. The lower scuttle panel is secured using two 10mm bolts on the outer edge (blue arrow) and two 10mm nuts in the centre (orange arrows).



5. Unclip the wiring harness attached to the panel and then remove by unclipping the fixing tabs on either side.



6. Carefully move the panel up and away.

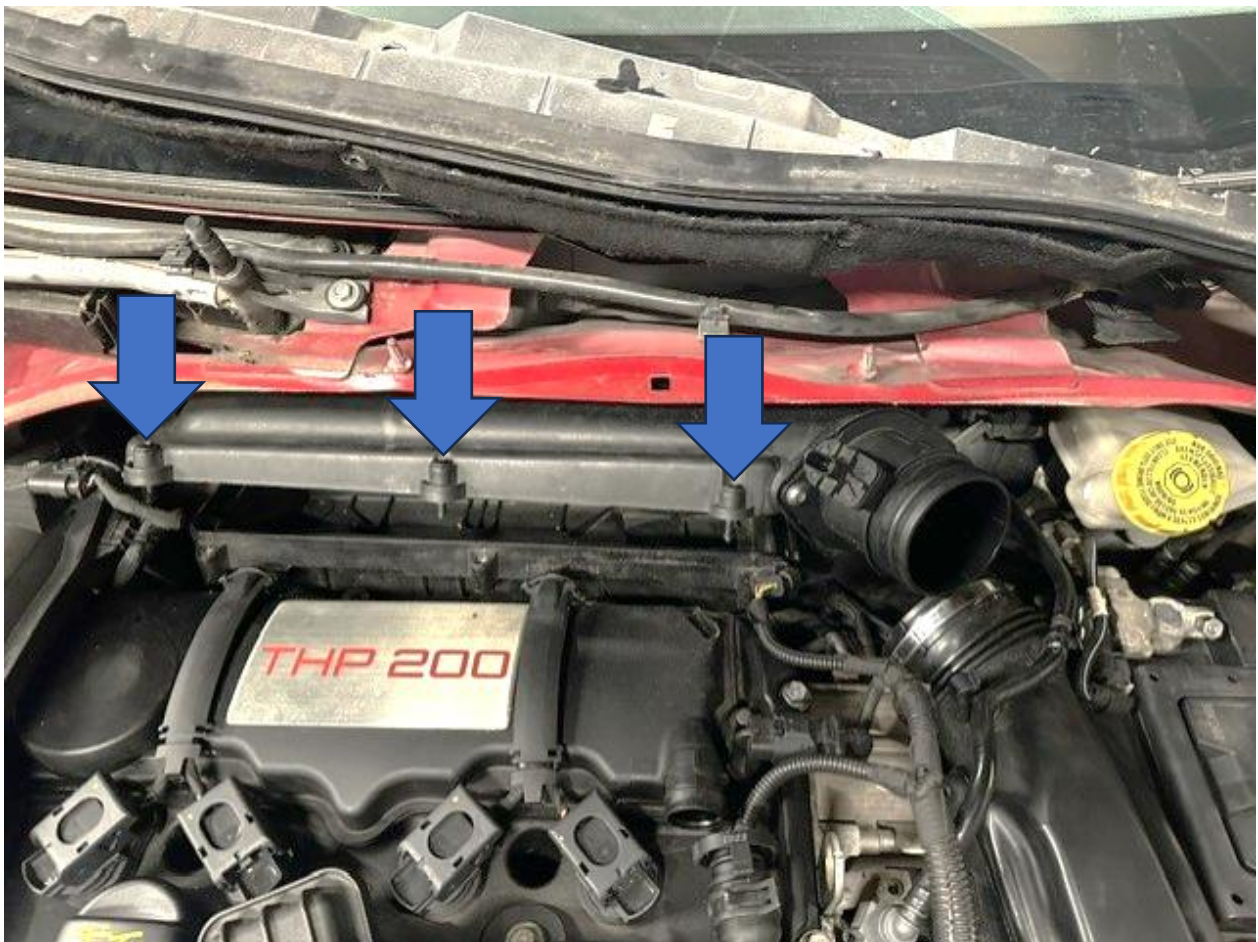
Please note: It cannot be fully removed as it will have cables passing through it.



7. Release MAF cable clip and undo the jubilee clip from the MAF pipe to the induction hose.



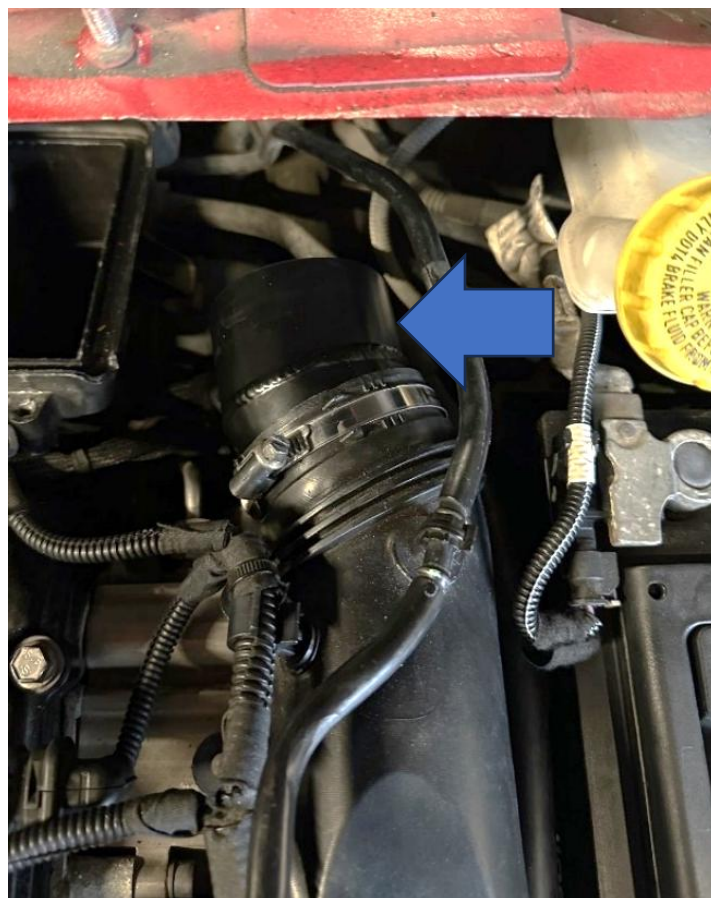
8. To remove the air box lid, undo the three screws holding the top in place.



9. Now lift the air box lid out from the car and remove the two bolts securing the MAF sensor pipe to the lid. Carefully remove both the O-ring as it will be reused.



10. Fit the supplied induction hard pipe into the original intake pipe, as shown. Use the original jubilee clip to secure in place but do not fully tighten yet.



11. Attach the supplied Pro-Hoses silicone connector onto the induction hard pipe and secure with the provided 80mm jubilee clip but do not fully tighten yet.



12. Fit the original MAF sensor to the supplied MAF housing plate pipe using the provided M6x16mm bolts, with Nyloc nuts and washers both sides, as shown.



13. Now attach the assembled MAF housing plate to the Pro Hoses connector with the supplied jubilee clip but do not fully tighten yet. Then fit the new AIRTEC Motorsport air filter to the MAF sensor with the jubilee clip provided.



14. Use the supplied aluminium spacers with the original screws to secure the new lid in place. Once in place, tighten down all the jubilees.



15. Finally, use the remaining M6x16mm bolts to secure the front induction shield in place and then reattach the MAF cable. You can then refit the scuttle panels in reverse of removal.

