

# Hyundai i20N Induction Kit

## Fitting Instructions

### Tools Required:

- Ratchet and Socket set
- Allen Keys
- Hose Clamp Pliers
- Jubilee-Flexidriver or Flat-Blade Screwdriver

### Kit Includes:

- 2x Pro Hoses Silicone Reducers
- 3x 90mm Jubilee Clips
- 1x 70mm Jubilee Clip
- 1x AIRTEC Motorsport Induction Pipe
- 1x AIRTEC Motorsport Induction Shield
- 1x Mounting Bracket
- 1x Sensor Harness Bracket
- 1x AIRTEC Motorsport Air Filter with Trumpet
- 1x M6x12mm Hex Head Bolt
- 2x M6x16mm Hex Head Bolts
- 3x M6 Washers
- 3x M5x12mm Cap Head Bolts
- 3x M5 Nyloc nuts
- 6x M5 Washers



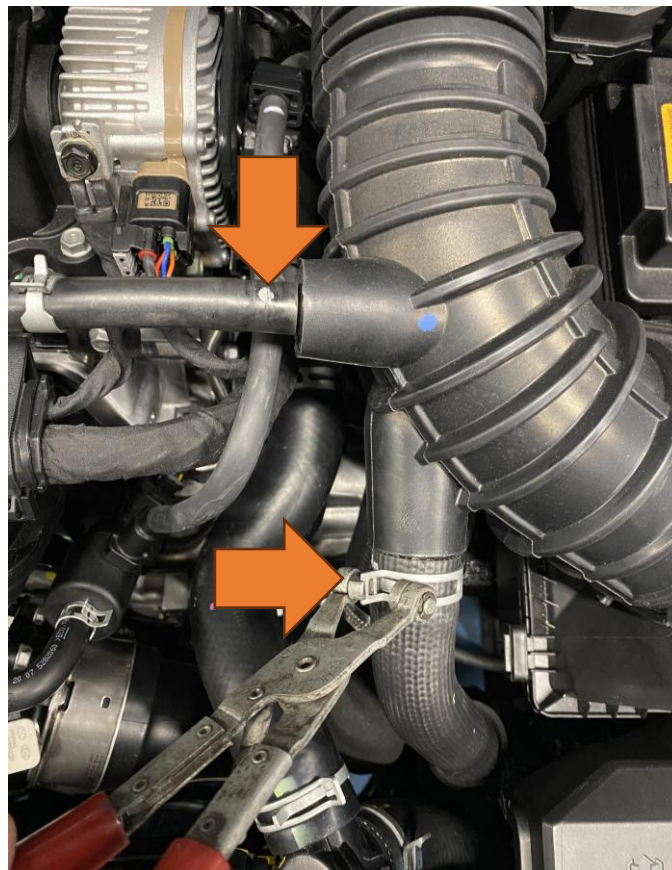
PLEASE THOROUGHLY READ THESE INSTRUCTIONS AND MAKE SURE YOU ARE FAMILIAR WITH THE STEPS BEFORE CARRYING THEM OUT

# Instructions

1. Open bonnet and locate the original induction pipe.



2. To remove the induction pipe, loosen the two hose clamps highlighted below using pliers and then disconnect the hoses.



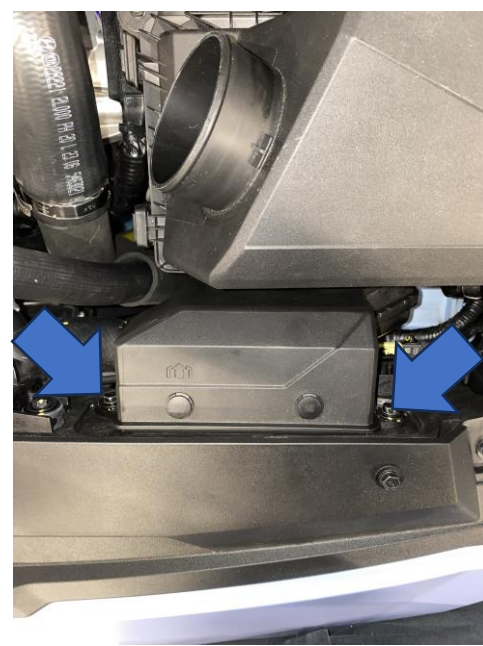
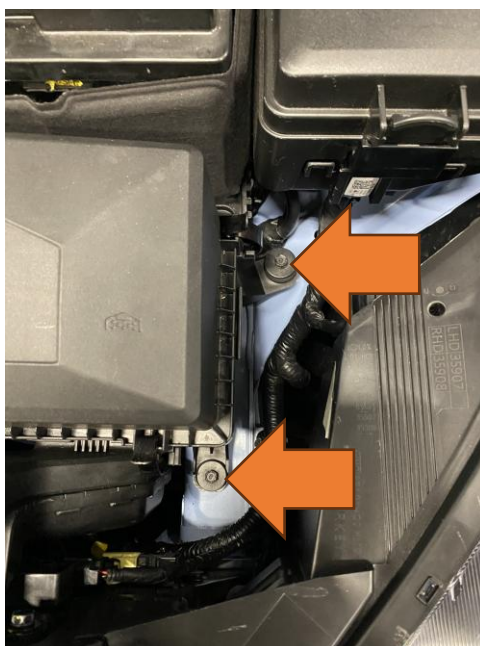
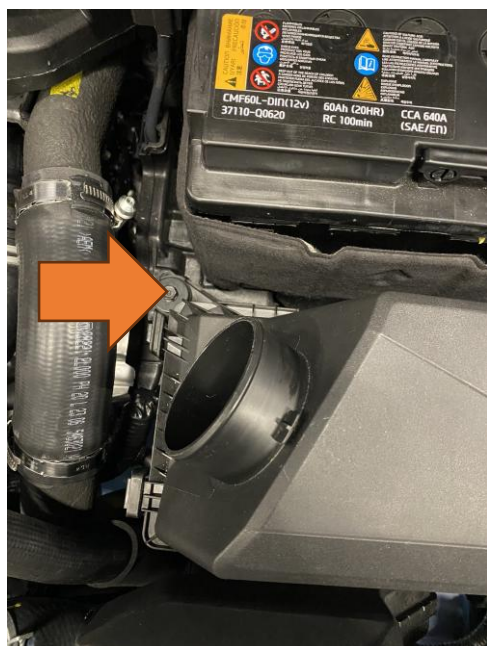


3. Undo the two 10mm hose clips at either end of the intake pipe and remove it from the car



4. Undo the three 10mm bolts securing the air box (orange arrows). Then remove the two 10mm bolts holding the front air feed in place (blue arrows). You can then remove the assembly from the car.

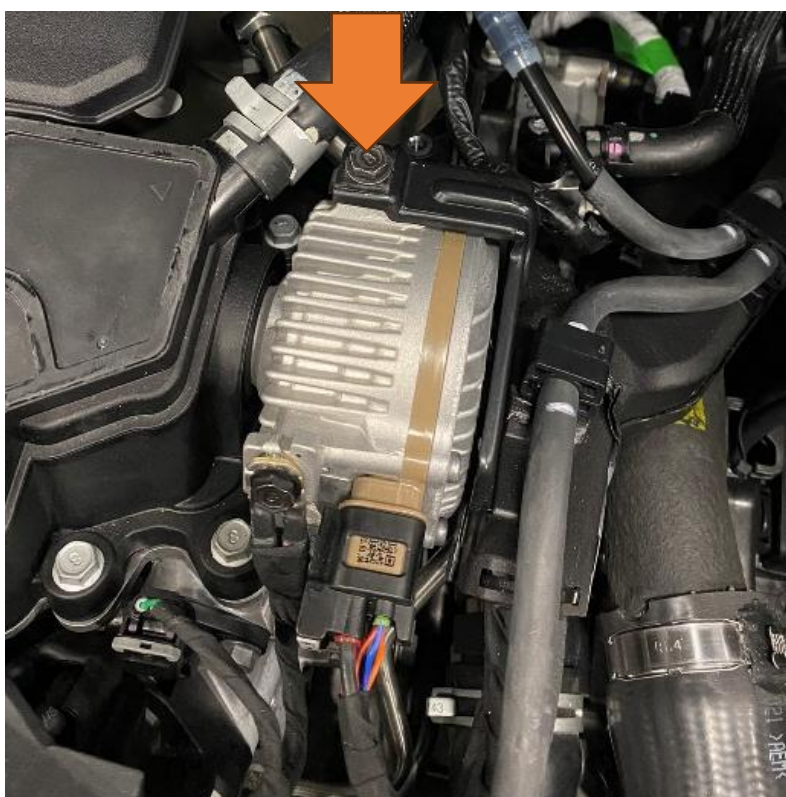
**Please note:** There is also a wiring loom hidden underneath that needs to be unclipped on the bottom of the air guide.



5. Now install the supplied silicone reducer onto the turbo elbow with a jubilee clip.



6. Remove the 10mm bolt highlighted.





7. Install the new induction pipe into the silicone connector with a jubilee clip and then attach the supplied support bracket loosely to the pipe using the M6 bolt and washer provided, as shown.



8. Tighten the rear jubilee clips and then refit the bolt removed in Step 6 to secure the mounting bracket. Fully tighten the mounting bracket bolt to the pipe and then reattach the two pipes removed in Step 2.

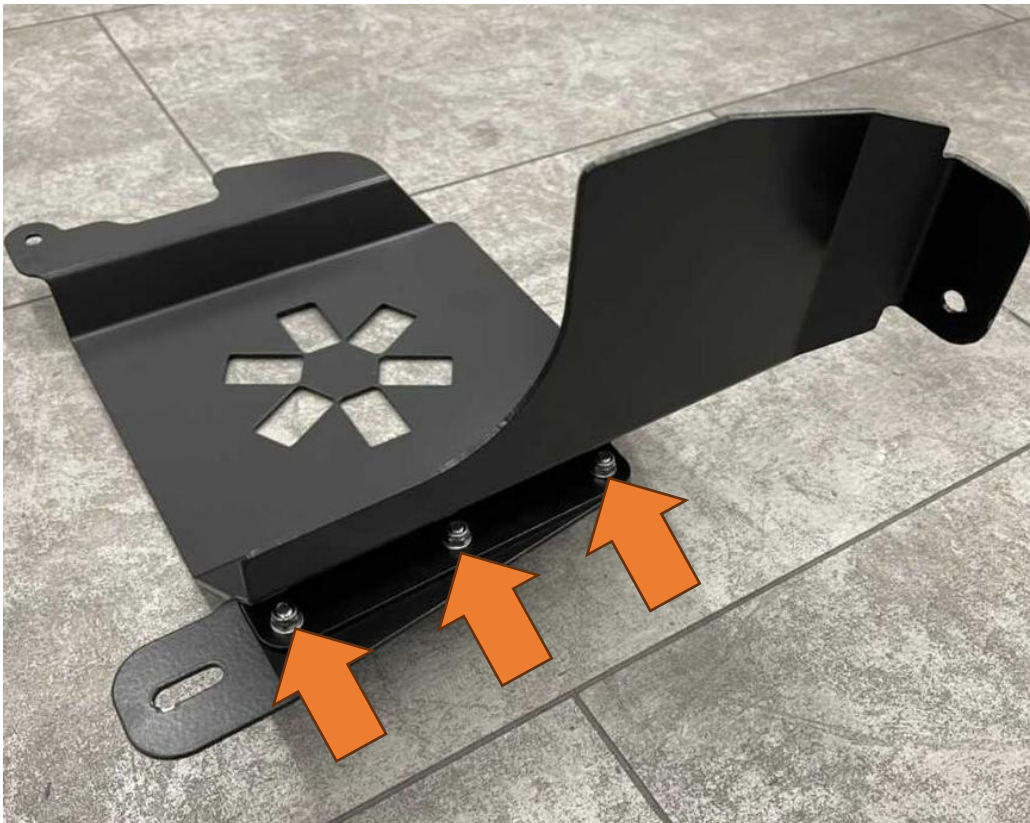




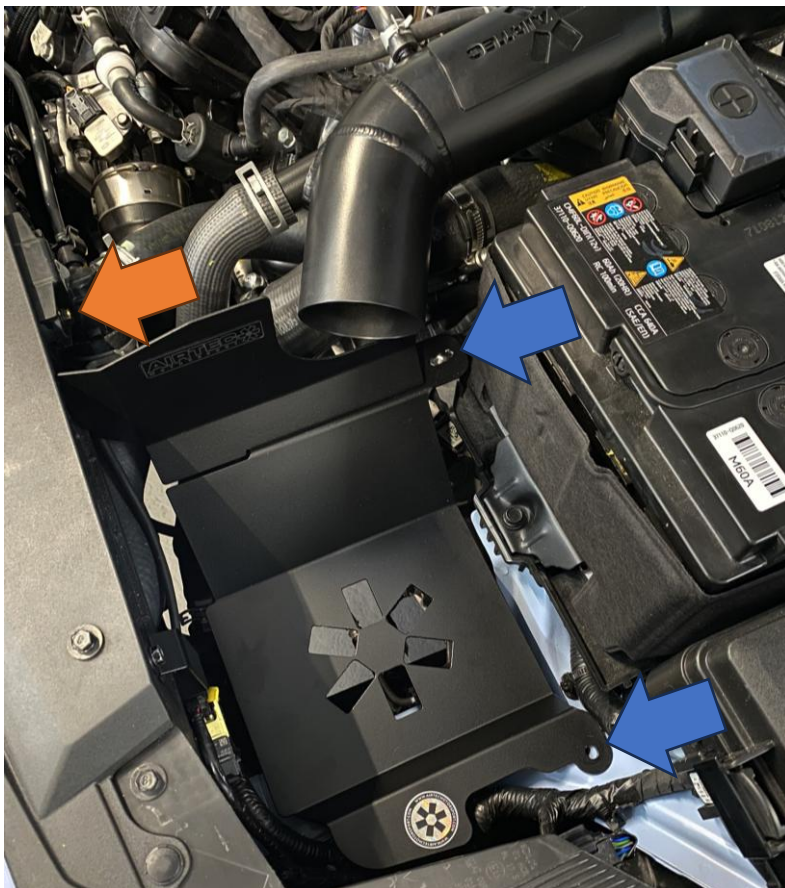
9. Fit the second bracket that will hold the sensor clip in place using the bolt that held one side of the front air feed removed in Step 4. Then clip the wiring plug to it.



10. Assemble the induction shield together using the supplied M5 bolts with nuts and washers both sides.



11. Now install the induction shield to the car reusing the second bolt removed in Step 4 (orange arrow). Use the supplied M6x16mm Hex Head bolts with washers to secure to the car using the air box's original bolt locations (blue arrows).



12. Install the filter onto the trumpet and then fit the supplied silicone connector onto the trumpet and tighten the jubilee clips. This can then be installed onto the car.





13. Finally, once happy with the fitment of everything ensure all jubilee clips and the bolts on the induction shield and bracket are tight.

