

E9x M3 Brake Cooling Package Fitting Instructions

Tools Required:

- Ratchet and Socket Set
- Sharp Knife
- Side Cutters
- Heat Gun (or hair dryer)

Kit Contents:

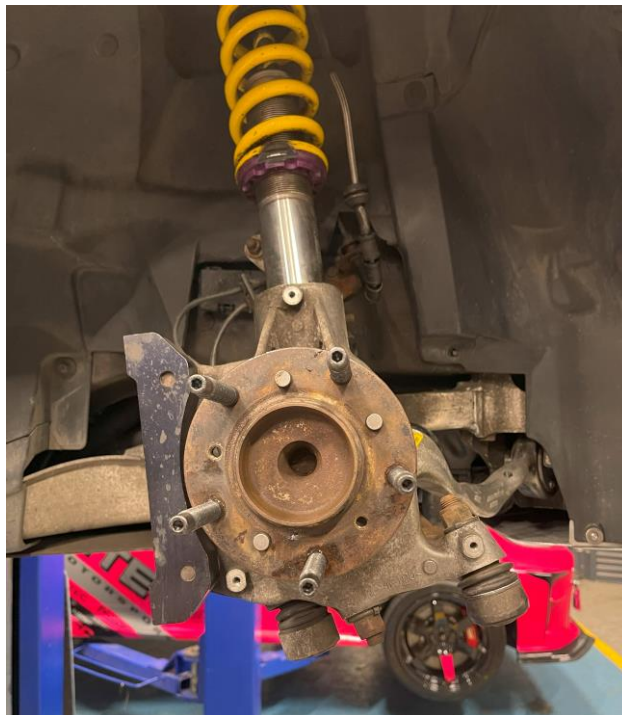
- 1x AIRTEC Motorsport Backing Plate Left-Hand Side
- 1x AIRTEC Motorsport Backing Plate Right-Hand Side
- 2x Hose Duct Dividers
- 6x Spacer Boss (2x small, 2x medium and 2x large)
- 1x Large Diameter Ducting (60mm)
- 2x Small Diameter Ducting (3.25 metres)
- 4x 60mm Jubilee Clips
- 6x Heat Shrinking
- 10x Cable Ties
- 2x M6x80mm Countersunk Bolts
- 2x M6x35mm Countersunk Bolts
- 2x M6x30mm Countersunk Bolts



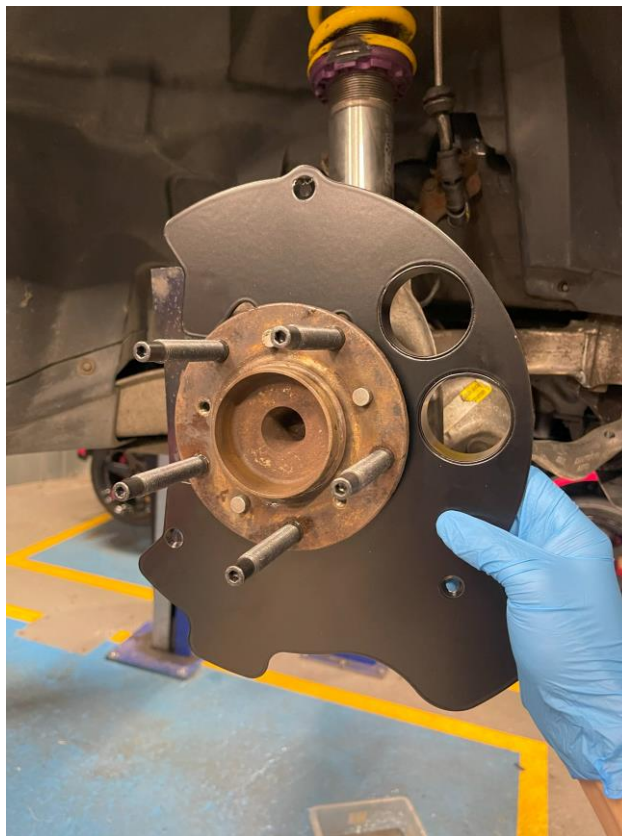
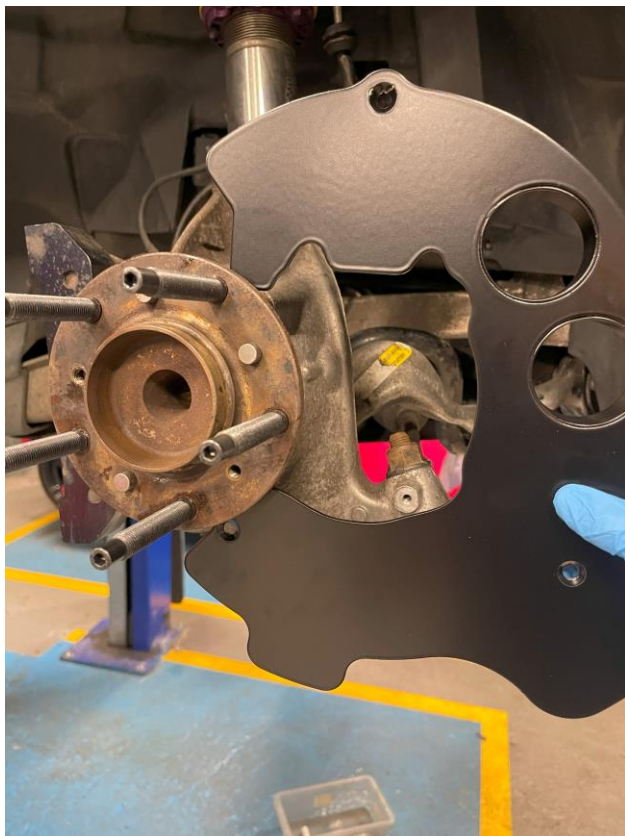
PLEASE THOROUGHLY READ THESE INSTRUCTIONS AND MAKE SURE YOU ARE FAMILIAR WITH THE STEPS BEFORE CARRYING THEM OUT

Instructions:

1. Start by removing the wheel, brake disc, caliper and backing plate. This process will vary dependent on the brake set up in place.



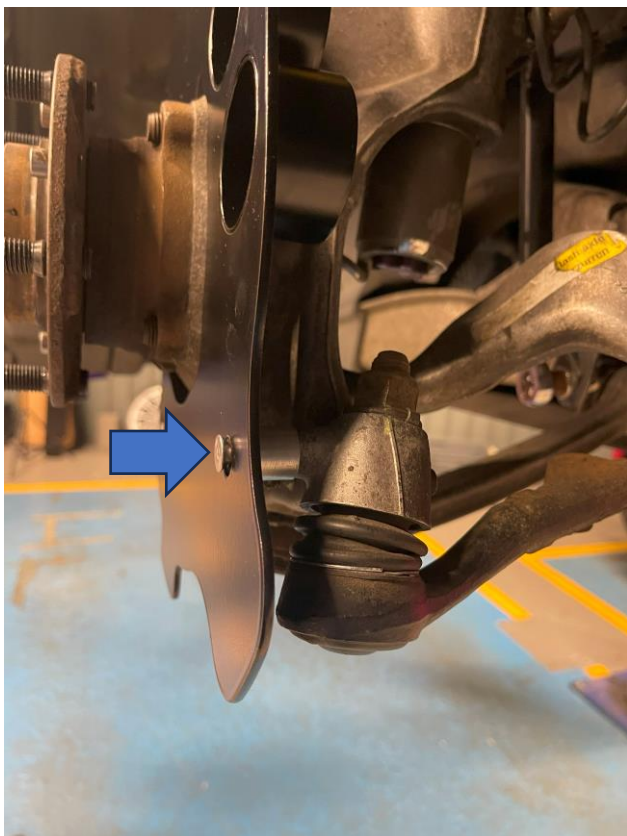
2. Slide the supplied backing plate on the correct side over the hub at its smallest point, as shown.



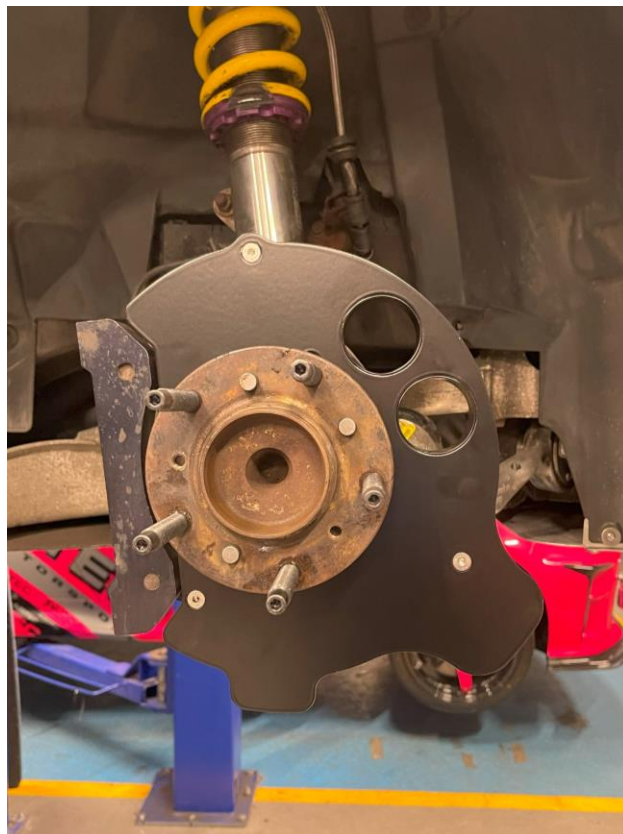
3. Fit the longest supplied spacer and bolt and hand tighten through the top hole.



4. Now fit the shortest supplied spacer and bolt in the hole located nearest to the track rod end.



5. Fit the remaining spacer and bolt to the last hole. Once all bolts are in place, fully tighten them.



6. You now need to cut the supplied ducting. This can be done with a sharp knife together with side cutters. The larger diameter hose is supplied in a 600mm length, and we recommend this is cut into two 300mm sections, which suits most GT4-style front splitter brake ducts, as fitted to this car.



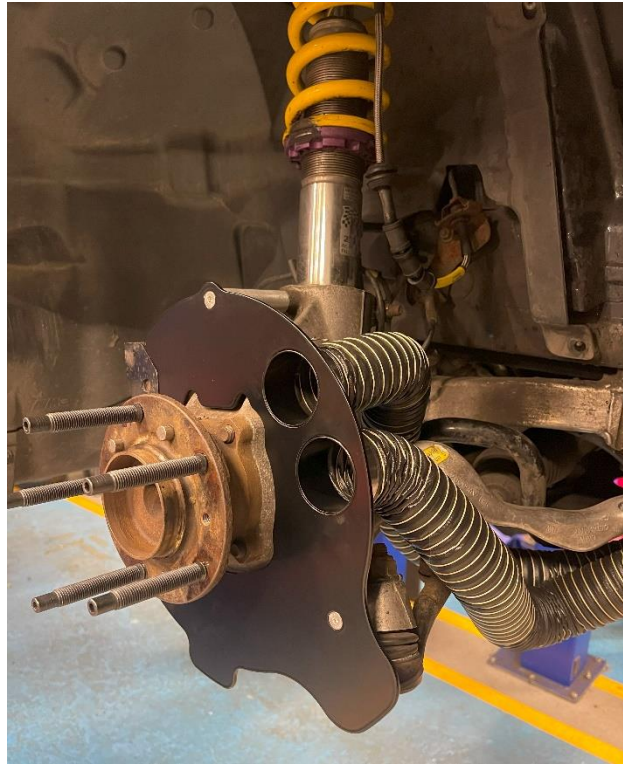
7. The smaller diameter hose is supplied in a 3.25-metre length and we recommend this is cut into **two 725mm sections** and **two 875mm sections**, which suits most GT4-style front splitter brake ducts, as fitted to this car. **Please note:** Other bumper/splitter styles may require different lengths and we recommend carefully measuring the pipework routing before cutting.



8. Attach one of the 875mm hose lengths to the top inlet duct and secure using a supplied jubilee clip.



9. Attach one of the 725mm hose lengths to the bottom inlet duct and secure using a supplied jubilee clip.



10. Now place a section of the supplied heat shrink shielding over each connection and join the two smaller hoses to the supplied brake duct divider. Use a heat gun on a **low setting** (or a hair dryer) to **slowly** seal the hoses to the duct divider. The larger remaining hose can be then added to the other end in the same way.

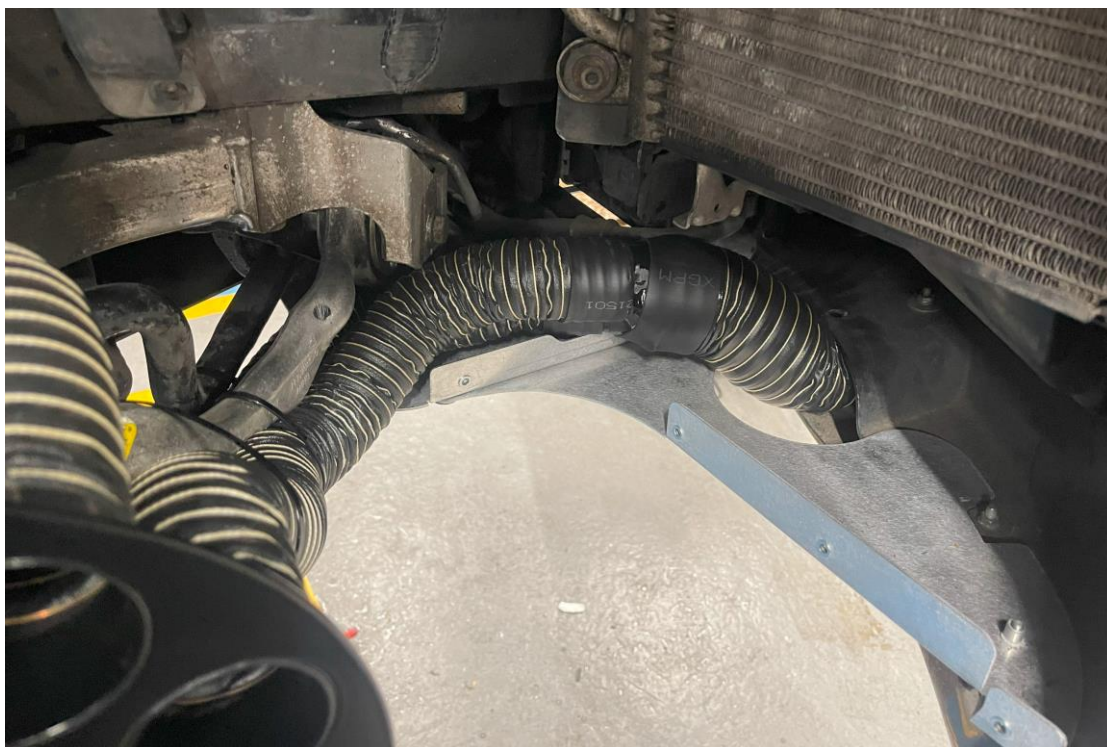


11. Now remove the front part of the arch liner to gain access to route the hosing.



12. Route the ducting together along the control arm and use the supplied cable ties to secure tightly in place. **Please note:** It is advisable to fit a wheel back on and check to ensure that the hoses clear when the steering is on full lock in both directions. Re-adjust the hose routing if there are clearance issues.

The routing to the front of the car will depend on your particular bumper/splitter set up. The example here is fitted to a GT4-style splitter.



13. Finally, refit the arch liner, brake calliper, disc and wheel and ensure everything provides sufficient clearance. Then repeat the process on the other side.

