

# Audi S1 Stage 2 Intercooler Fitting Instructions

## Tools needed:

- Ratchet and Socket Set
- Torx Sockets
- Jubilee Flexi-driver or Flat-Blade Screwdriver
- Trim Removal Tool
- Dremel Tool or similar (to cut the plastic surround)
- Axle Stands
- The help of a second person (to lift radiator pack)

## Kit Includes:

- 1x AIRTEC Motorsport Stage 2 Intercooler
- 1x Pro Hoses Replacement Washer Hoses
- 2x Radiator Support Brackets

### FITTING KIT:

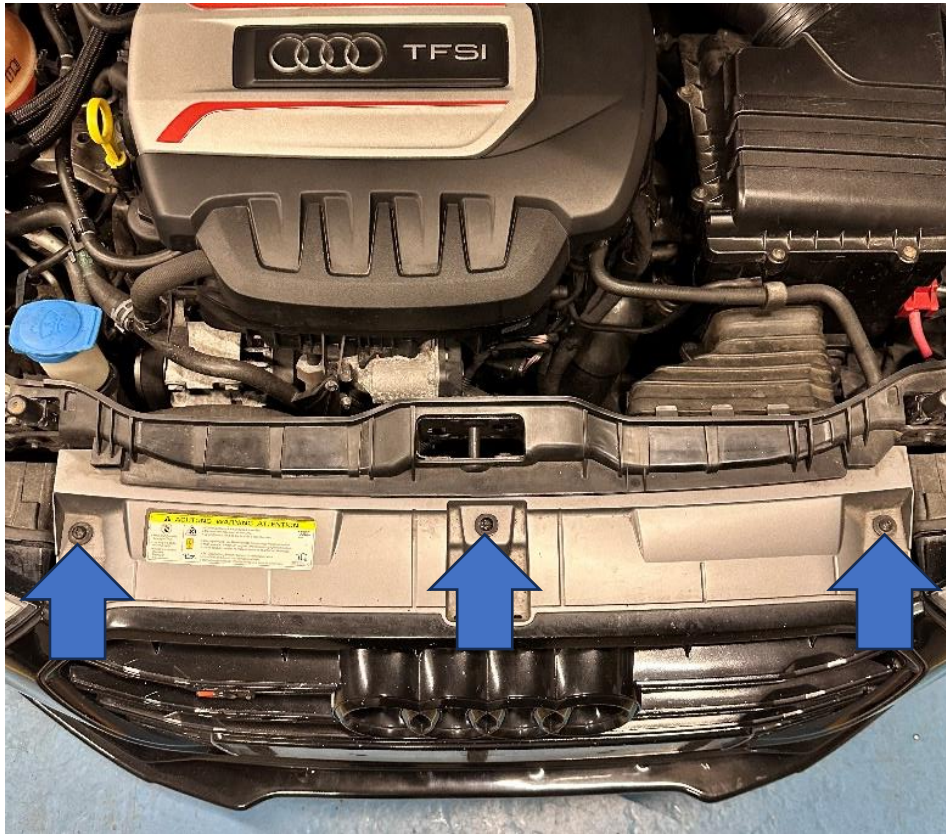
- 2x M6x30mm Socket Head Bolts
- 2x M6 Washers
- 2x 20mm Jubilee Clips
- 2x Large Cable Ties



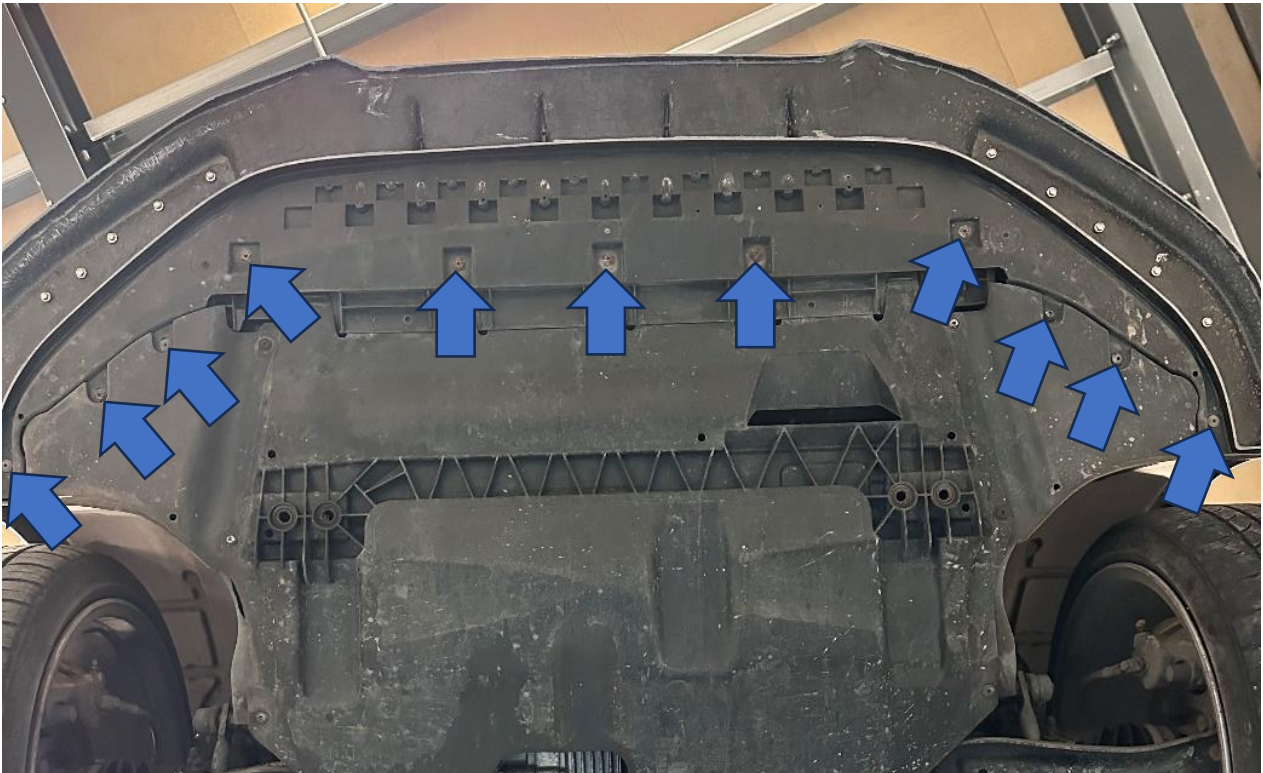
PLEASE THOROUGHLY READ THESE INSTRUCTIONS AND MAKE SURE YOU ARE FAMILIAR WITH THE STEPS BEFORE CARRYING THEM OUT

# Instructions

1. Open the bonnet and undo the three T27 Torx bolts at the top of the bumper.

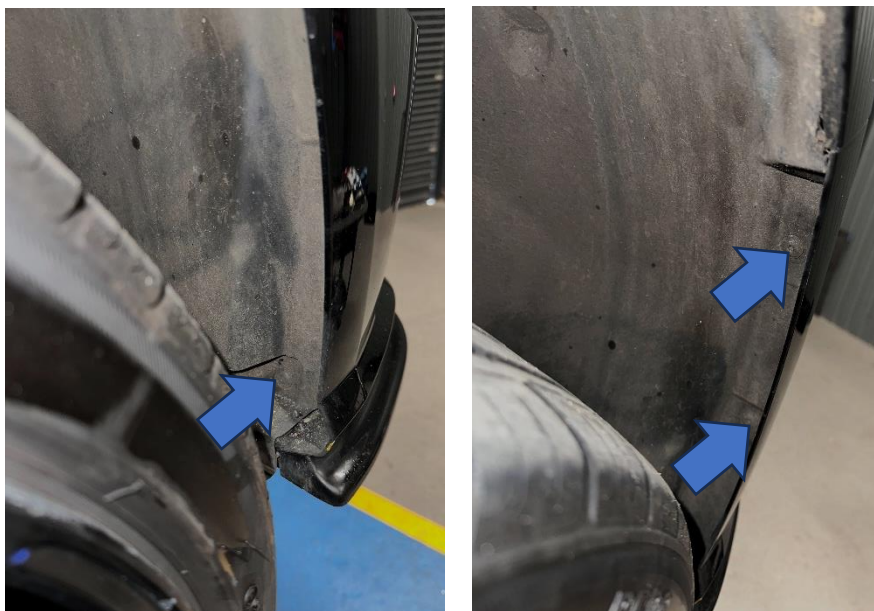


2. Working under the car, remove the 11 T25 Torx bolts holding the bumper to the car.





3. Inside of each wheel arch, remove the three T25 Torx bolts and pull back the arch liner so that you can access and remove the plastic push fit clip holding the bumper to the wing.



4. With the help of a second person, firmly but carefully pull the bumper out from each corner and then remove it from the car.



5. Remove the side radiator air guide by sliding it to the right to release it from the radiator.

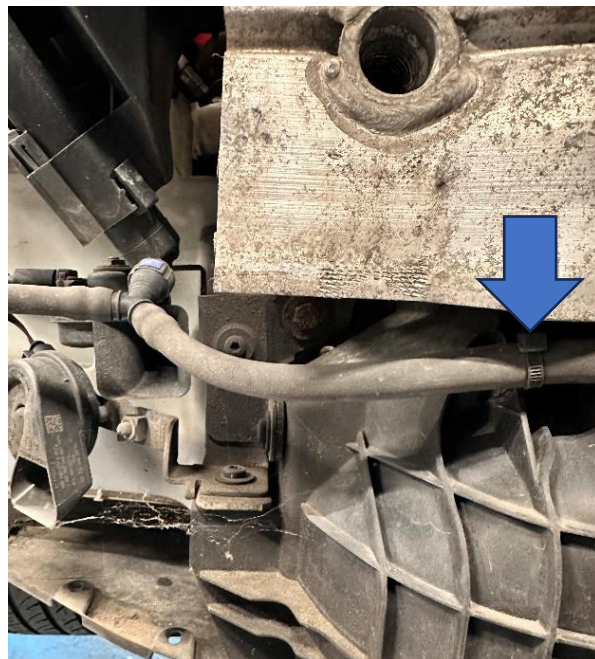


6. Unclip the air temperature sensor from the washer hose using a trim removal tool. You can then undo the wiring harness for it from the plastic surround at the side of the crash bar.

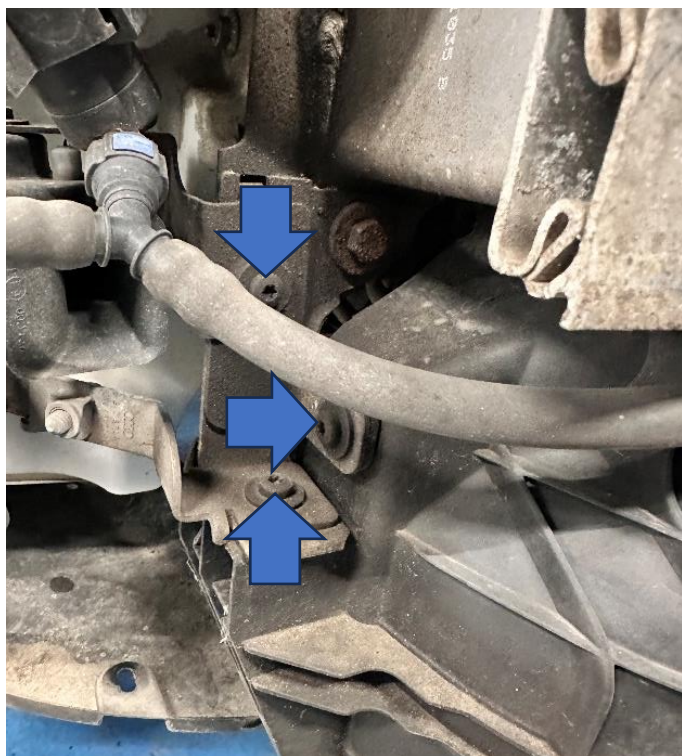




7. Unclip the right-hand side washer jet by squeezing the blue parts of the connector. **Please note:** Be sure to have a container ready to collect any spilled fluid. Remove the hose from the securing clips holding it in place along the crash bar and then unclip it from the left-hand washer jet and place aside.

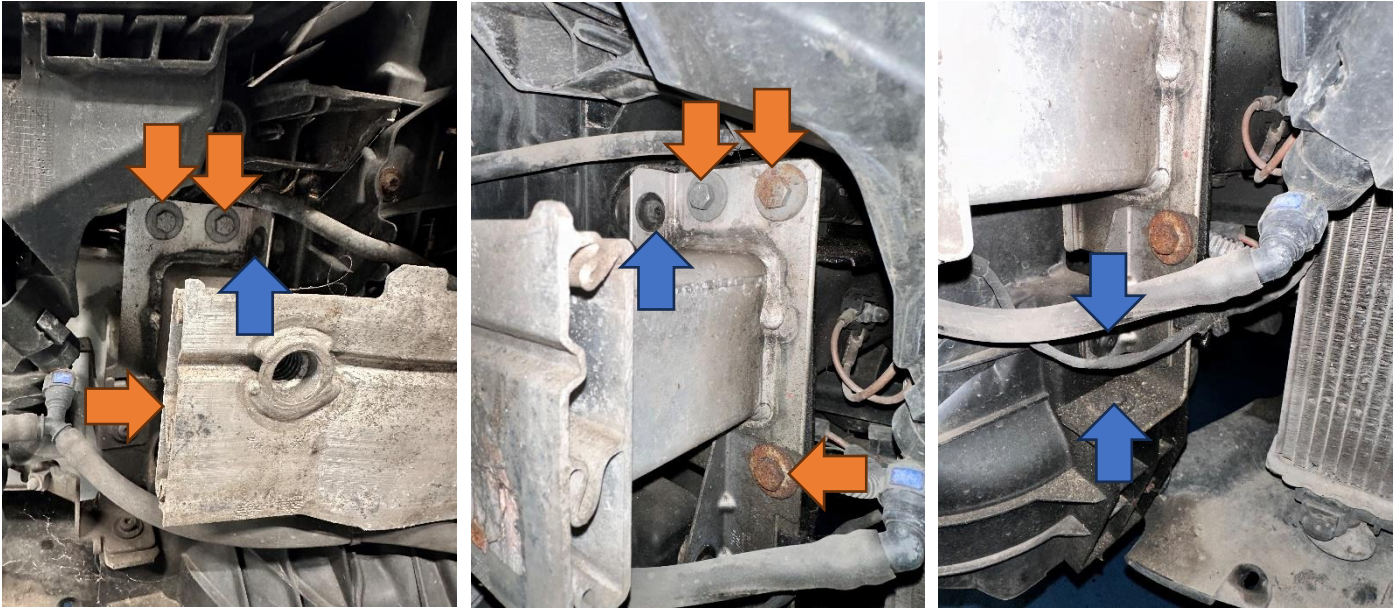


8. Remove the horn brackets by undoing the three T27 Torx bolts on the bottom left-hand side of the crash bar and place the horns out of the way.

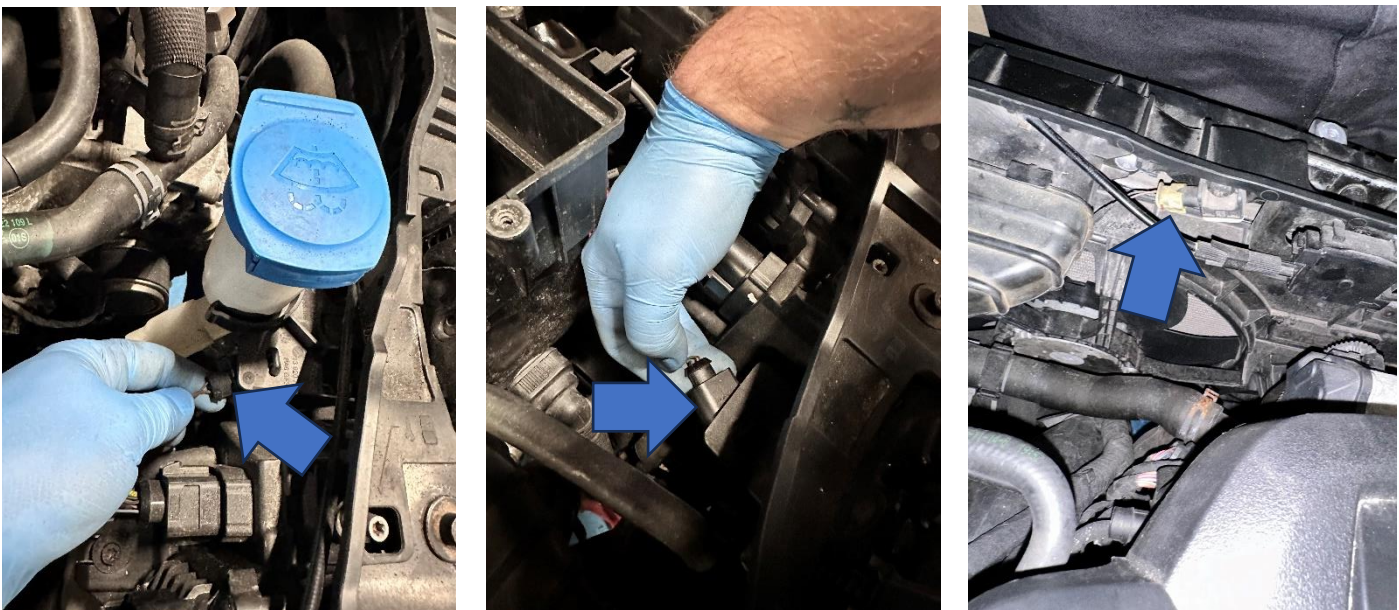




9. Undo the remaining four T27 Torx bolts (blue arrows) holding the plastic radiator support to the crash bar followed by the 13mm bolts (orange arrows) holding the crash bar to the car and then remove.

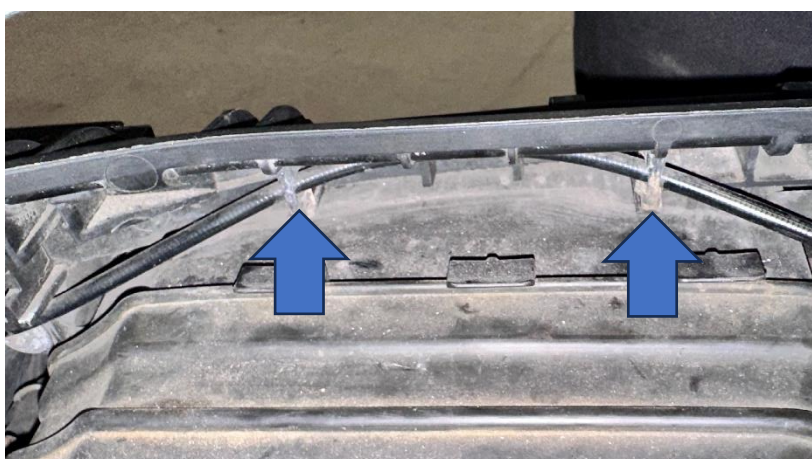
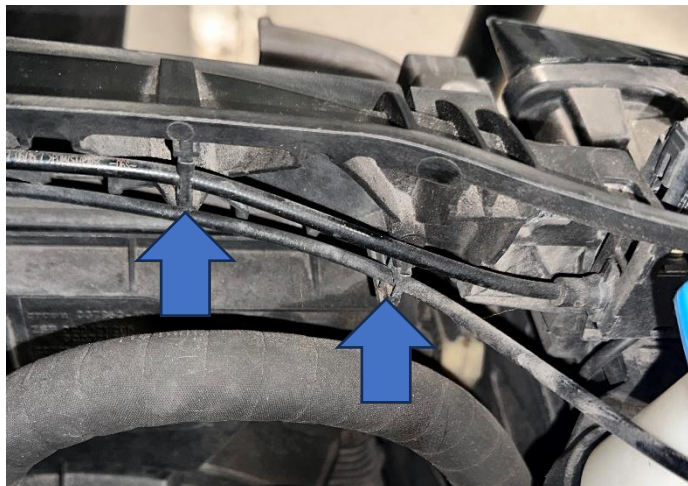


10. Disconnect the wiring connectors for the bonnet catches on the left- and right-hand sides of the car, followed by the yellow connector towards the centre of plastic surround.

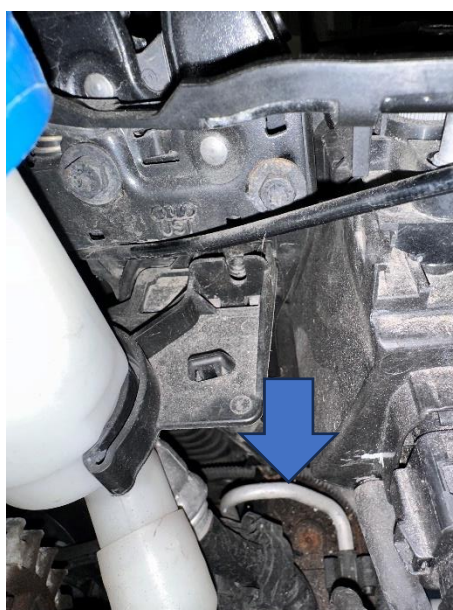




11. Remove the five metal clips holding the bonnet cable to the inside of the slam panel using a flat-blade screwdriver. Then remove the central plastic block housing the cables by pulling it out from the bottom first, which should allow the two upper clips to release.

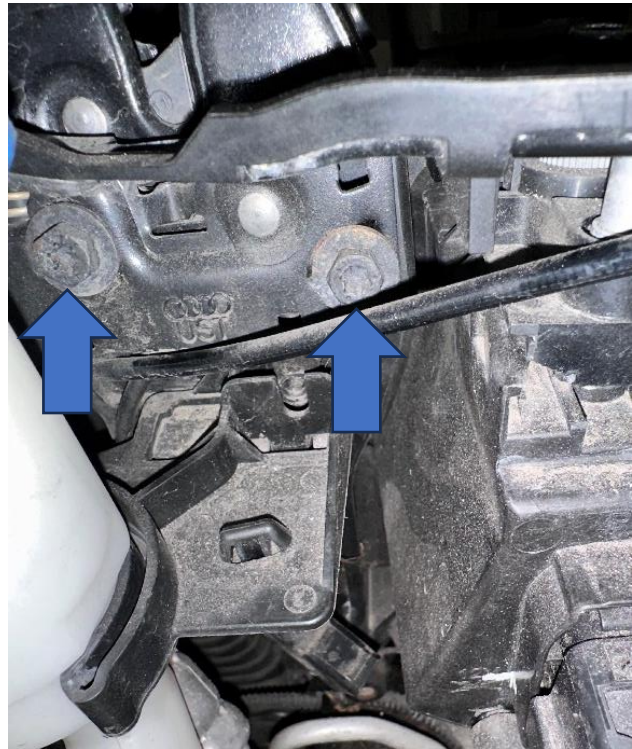
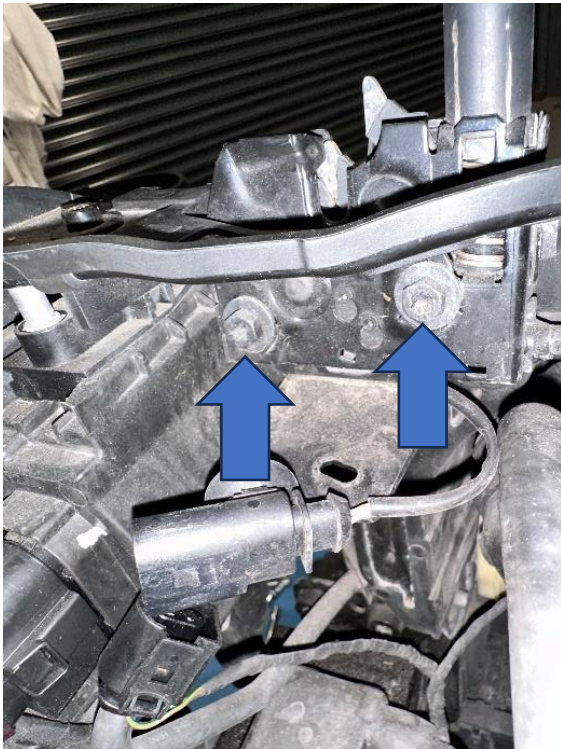


12. To place the washer bottle neck out of the way to gain more access to the bonnet catches, pull the plastic clip away from the surround.

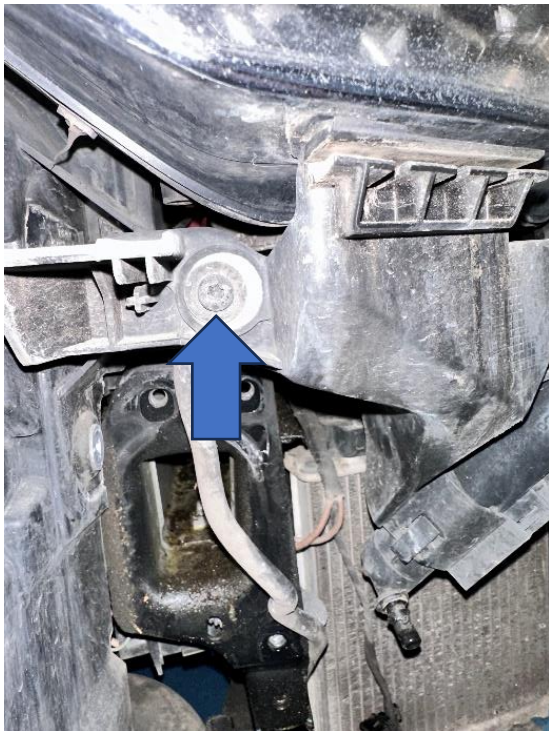




13. On the inside of the slam panel locate the two bonnet catches, one on each side. Undo the two 10mm bolts holding each side to the surround and then place these out of the way.

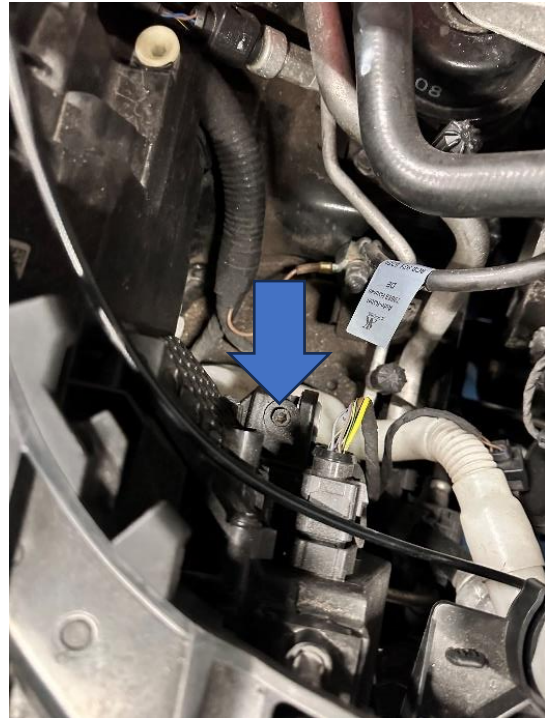
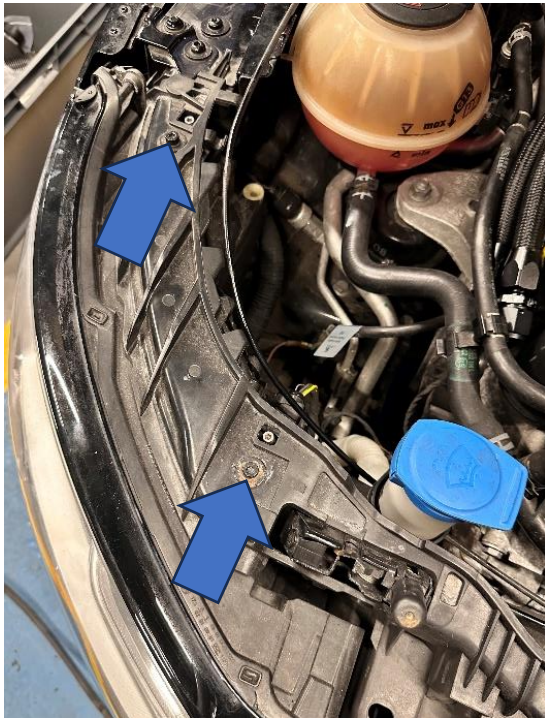


14. Remove the headlight supports underneath on each side by undoing the three T25 bolts and then pulling the unit forward.

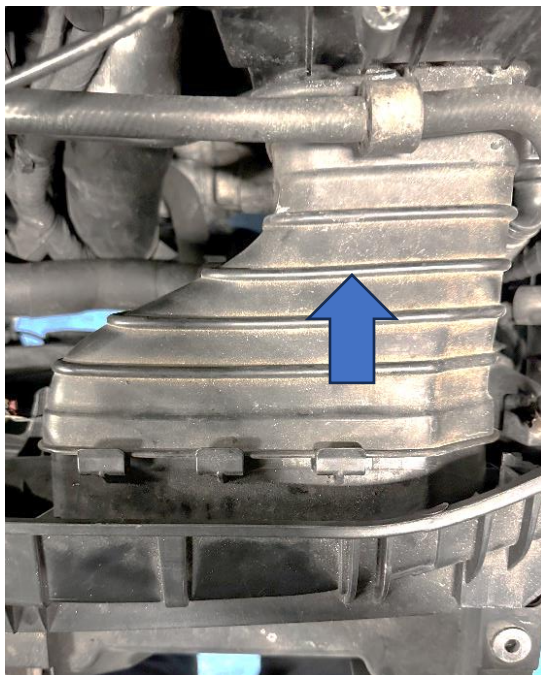




15. The next step is to remove the headlights from the car. Start by disconnecting the wiring plug followed by removing the three T25 Torx bolts; two on top and one at the back. The headlight will then come out through the front of the car.

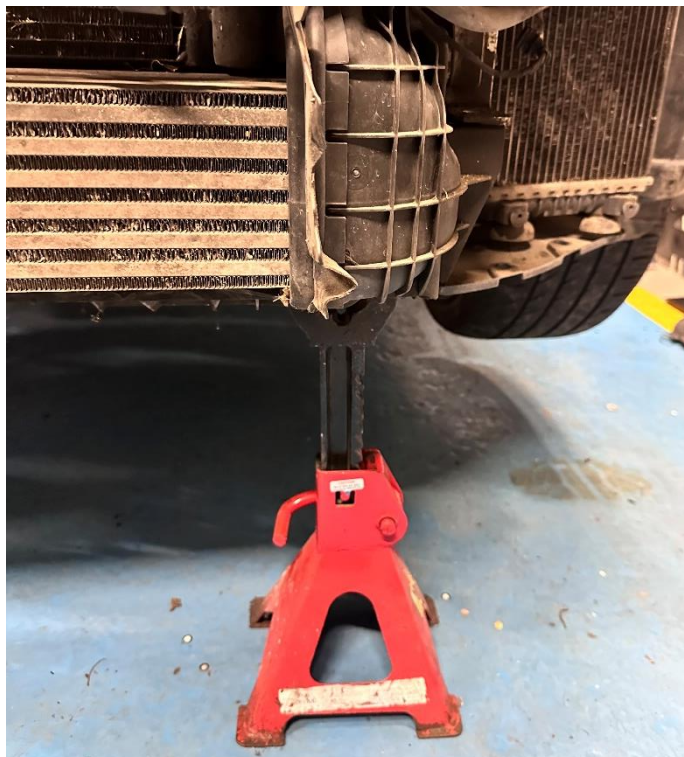


16. On the right-hand side of the engine bay, locate the rubber air inlet on the slam panel and pull it back to allow access to release the cable clips behind it, as shown.

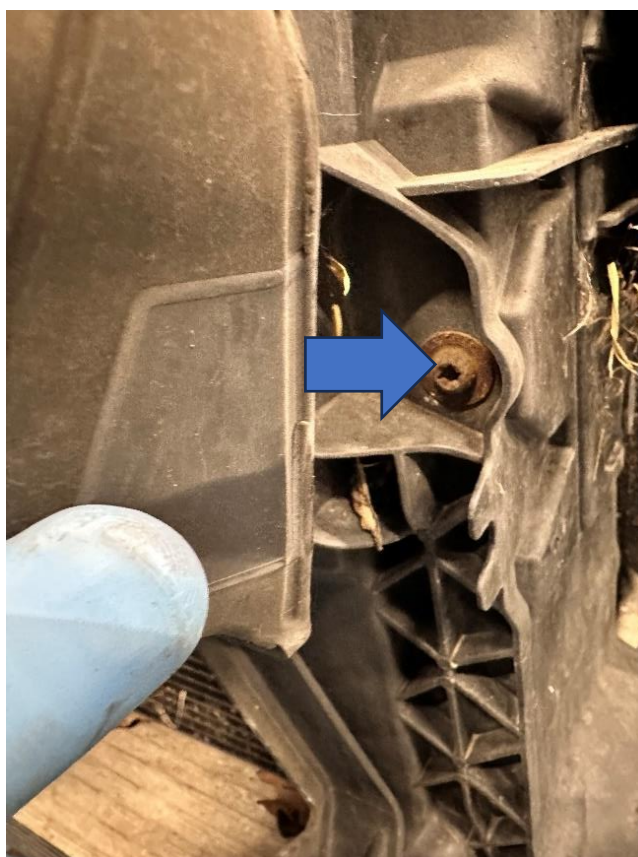
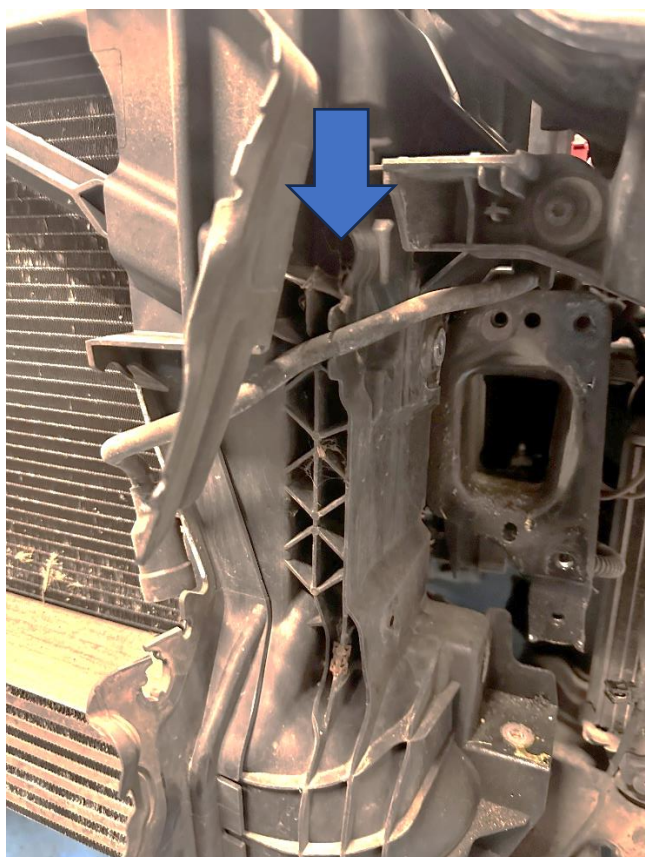




17. At this stage, we would recommend supporting the intercooler and radiator surround with an axle stand each side.

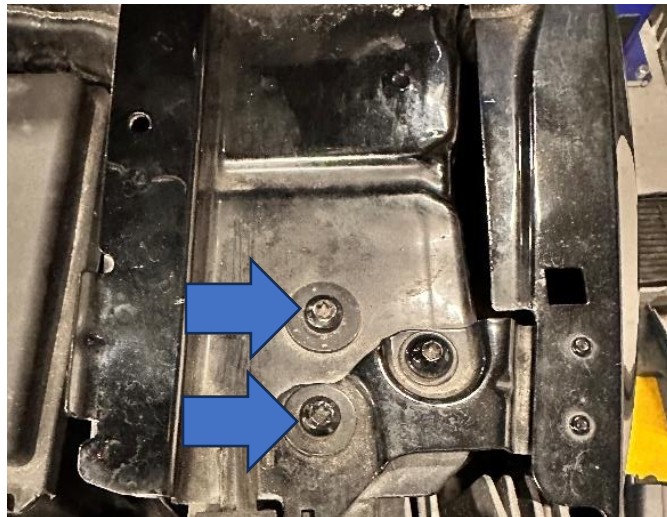


18. Pull the plastic trim forward to allow access to the T25 bolt each side and remove.





19. On the slam panel, undo the two T27 bolts above the headlights on each side and then, with the help of a second person, pull the surround forward and then lift the rad pack up to release it from the bottom rubbers and it will then come away. Place it aside safely out of the way.

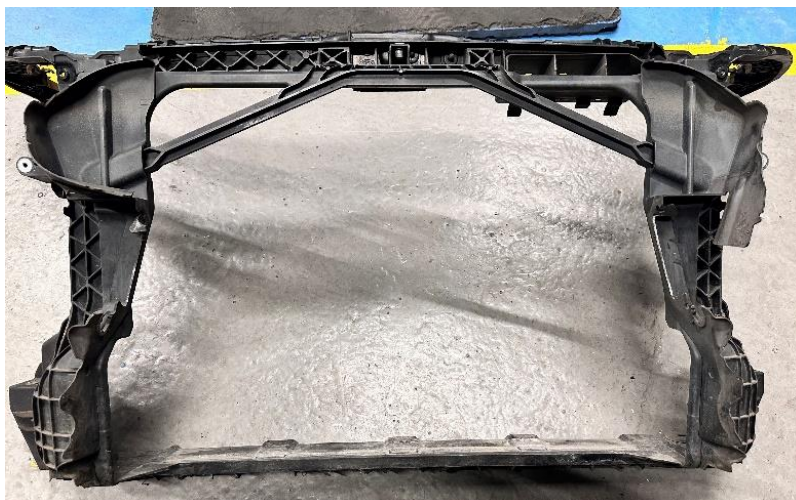


20. The intercooler can now be removed by undoing the remaining jubilee clips, followed by releasing the clips at the front and back on the right-hand side so that the intercooler can be pushed down and then to the left to release.



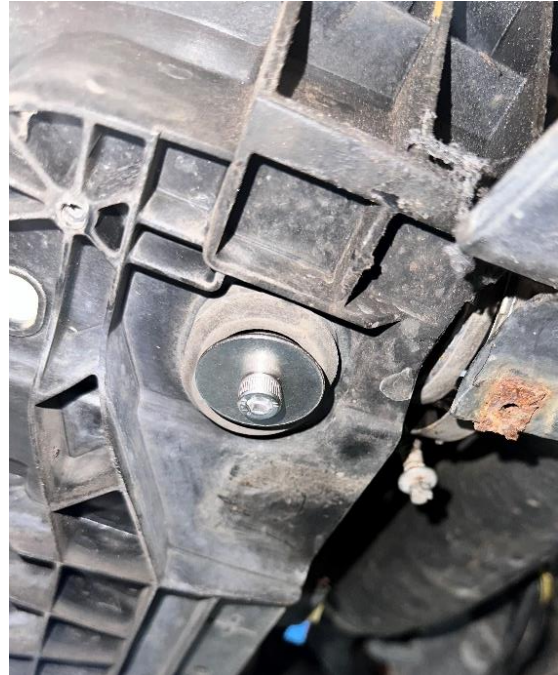


21. The original surround will need to be modified to install the new intercooler. Start by removing the plastic/rubber air guides by pulling them away from the surround. The surround will then need to be cut, see the guidelines shown below to give an idea of the area that needs to be removed. Line up the intercooler in front of the surround before reinstalling to ensure enough material has been removed.



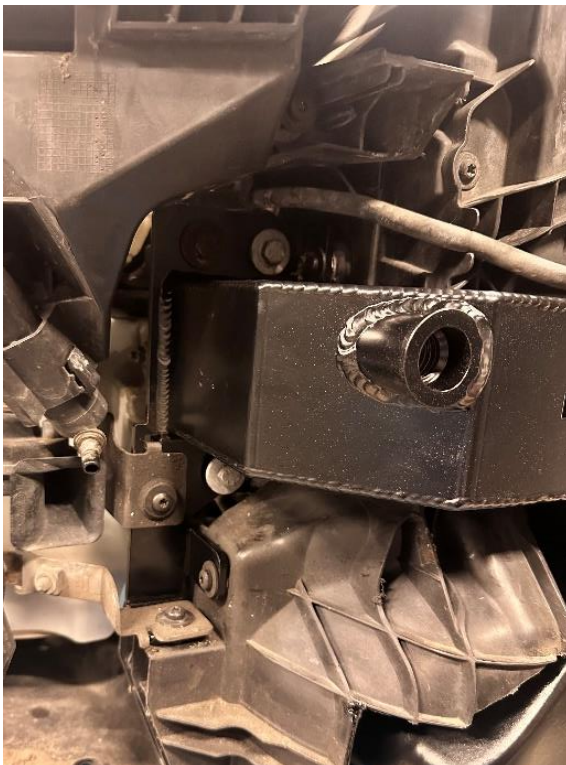


22. Install the supplied brackets on each side as shown to support the radiator and use the supplied M6 bolts with washers to secure from underneath, but do not fully tighten at this stage to allow adjustment.



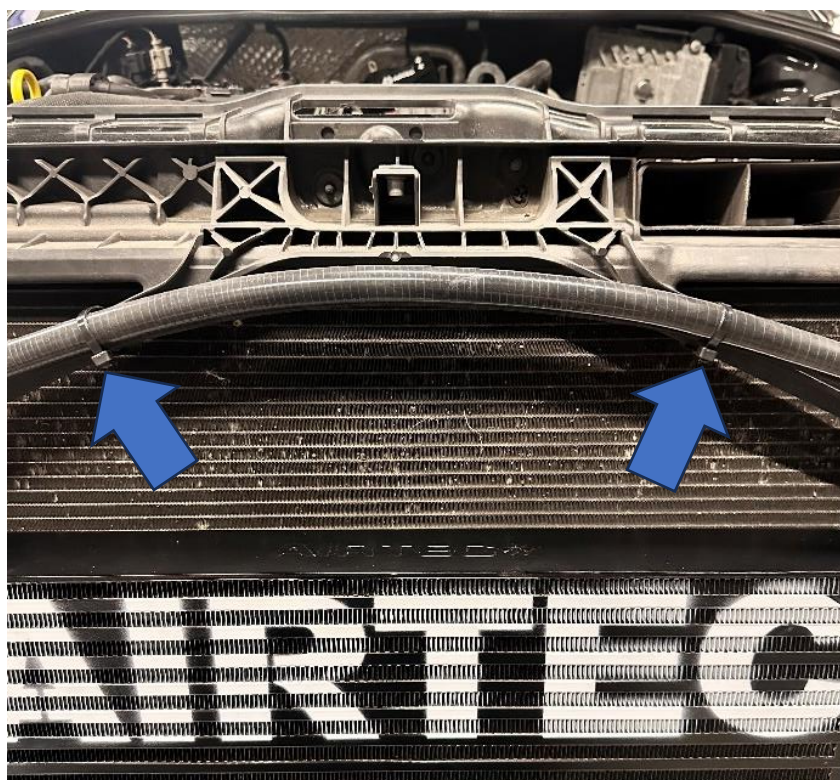
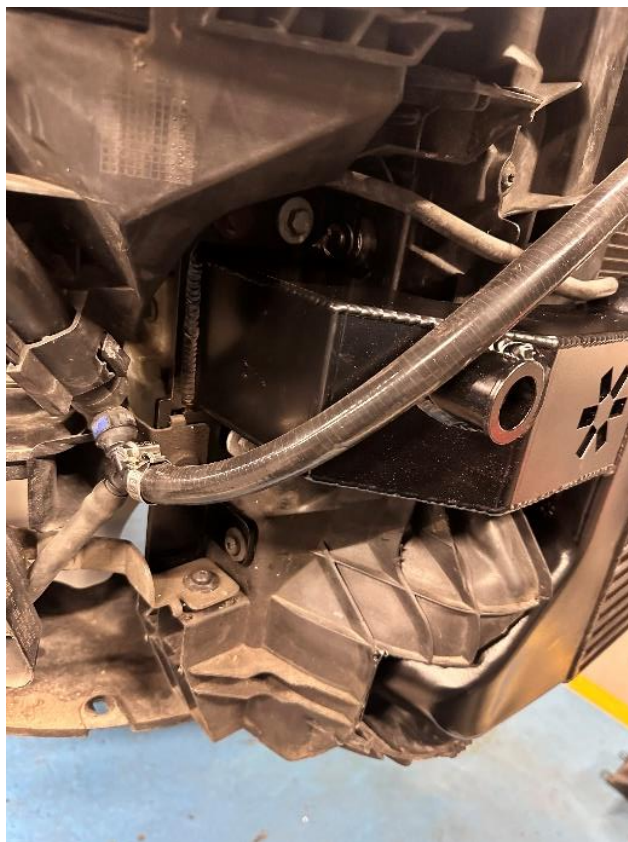
23. Reinstall the plastic surround and install the two top bolts on each side but leave them finger tight.

24. With the help of a second person, install the intercooler and crash bar assembly by hooking the left-hand side in first and then the right-hand side. Reinstall the original hoses, tighten the jubilee clips and then loosely install the six 13mm bolts that secure the crash bar in place. You can then reinstall the horn brackets along with the bolts that hold the plastic surround to the crash bar. Then have one person lift the intercooler assembly upwards so that you can fully tighten the 13mm bolts.





25. Reinstall the headlights and support brackets onto the car. To reconnect the washer jets, you will need to fit the supplied length of silicone hose by cutting the original washer jet hose by each connector, as shown. The new hose can then be installed using the supplied jubilee clips and we recommend routing the hose along the plastic support brace using the two supplied cable ties.





26. Reinstall the air temperature sensor as shown, along with the cable clip.



27. Finally, the rest of the car can be reassembled in reverse of removal and the bolts previously left loose in Step 23 can now be fully tightened. You may need to adjust the positioning of the crash bar to alter the alignment of the bumper along with adjusting the headlight bolts.

