

Toyota Yaris GR Rear Wing

Fitting Instructions

Tools needed:

- Ratchet and 10mm Socket
- Allen Keys/Sockets
- Trim Removal Tool
- Ruler/Vernier Callipers (to accurately measure 6.5mm)
- Pen (to mark holes)
- Electric Drill
- 7mm Drill Bit

Kit Includes:

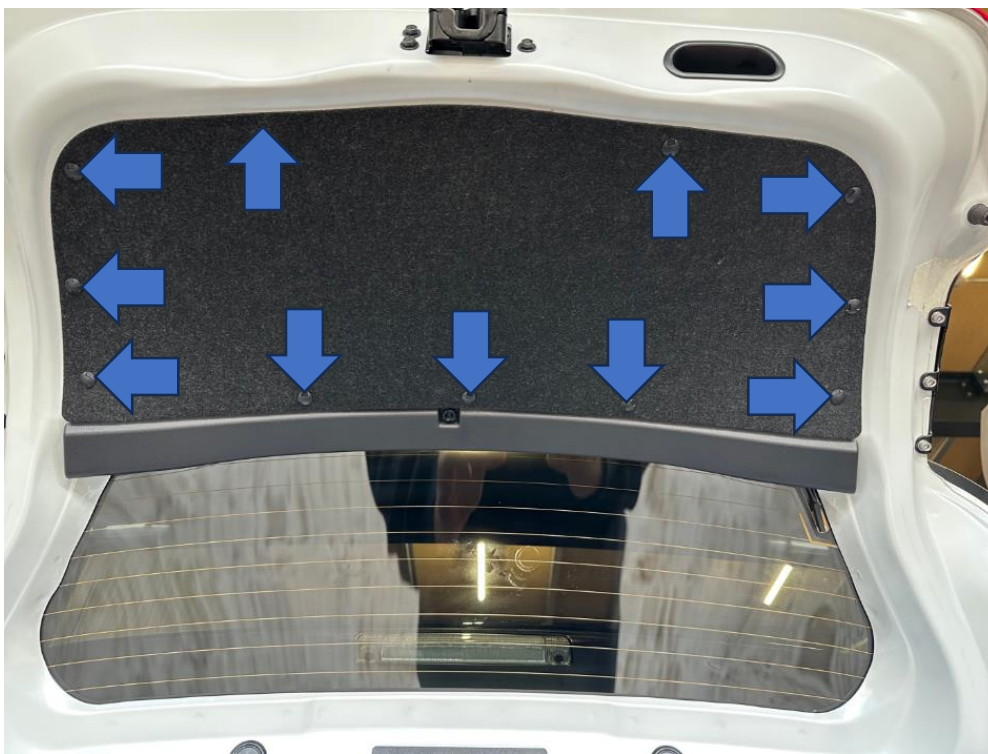
- 1x AIRTEC Motorsport Centre Blade
- 1x AIRTEC Motorsport Centre Section
- 2x AIRTEC Motorsport Uprights (left and right)
- 2x AIRTEC Motorsport End Plates (left and right)
- 6x M6x16mm Socket Head bolts
- 4x M6x16mm Button Head bolts
- 4x M6x25mm Socket Head bolts
- 24x M6 Pan Washers
- 10x M6 Nyloc Nuts

PLEASE THOROUGHLY READ THESE INSTRUCTIONS AND MAKE SURE YOU ARE FAMILIAR WITH THE STEPS BEFORE CARRYING THEM OUT

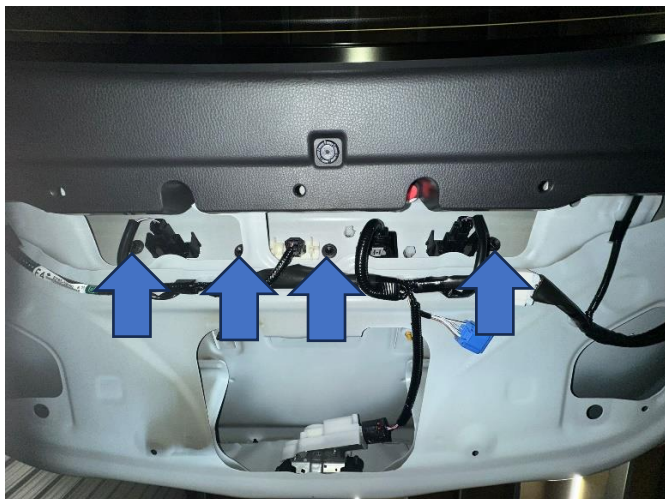


Instructions

1. Open the boot and using a trim removal tool, release the 11 push fittings to remove the inner trim section of the boot lid.



2. Locate the four 10mm bolts on the inside of the boot that hold the exterior trim in place and remove.



3. Now remove the exterior boot trim by firmly but carefully pulling the edge up and away from the car to release the push fittings underneath. Then work your way up and along; there are 11 clips in total.



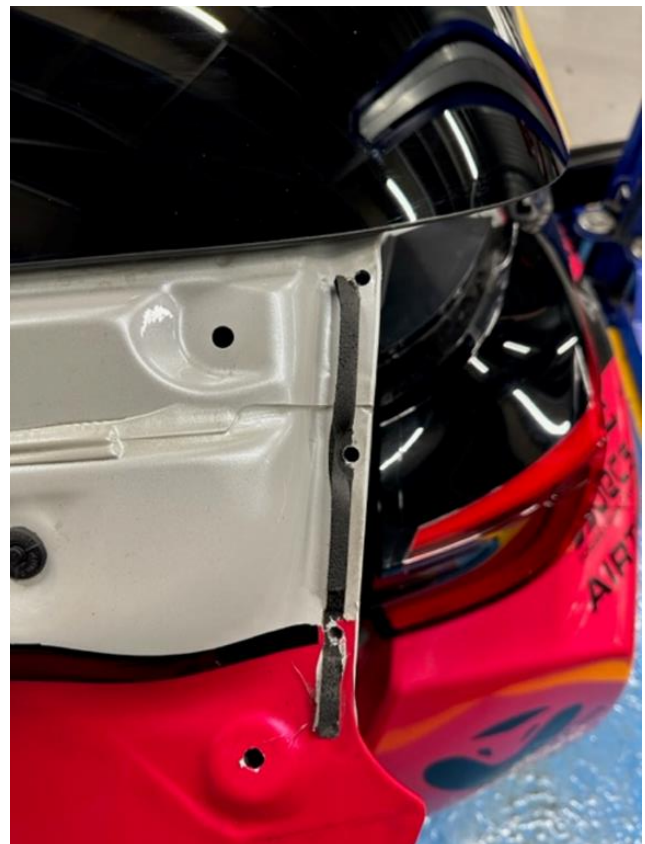
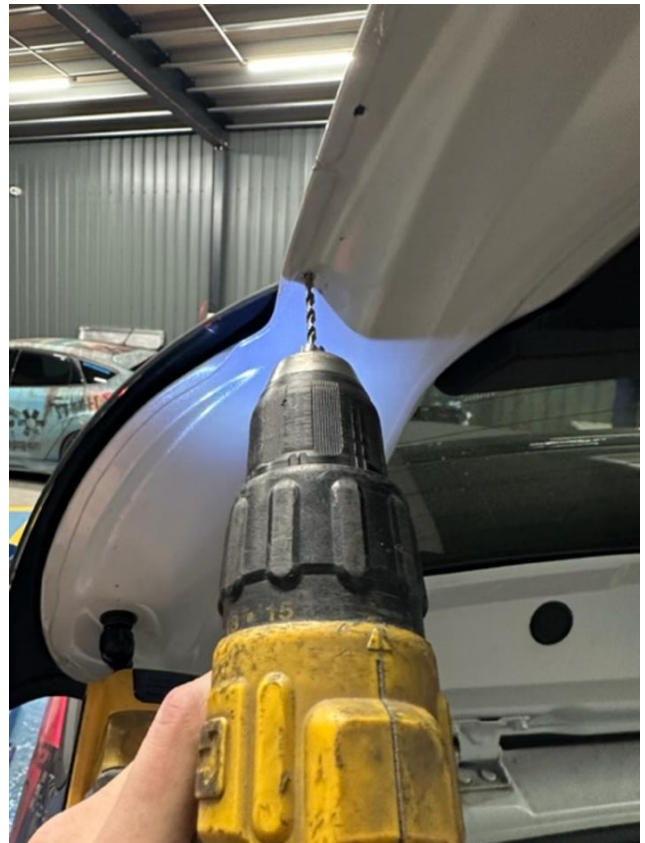
4. Once all the trim clips are released, pull the trim up and slide it away from the edge of the rear windscreen.



5. Hold each of the uprights up to the boot lid and mark the three holes. **IMPORTANT:** Make sure the uprights measure approx. 6.5mm away from the glass and are **exactly** the same both sides before marking.



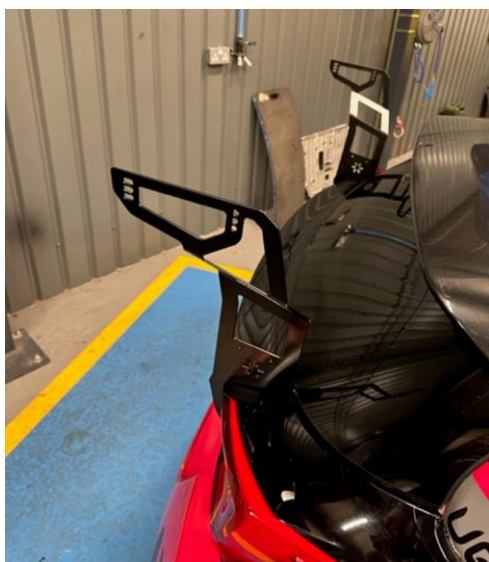
6. Once the holes are marked, drill them out to 7mm, ideally starting with a small drill bit and working your way up. Repeat for the other side so you have six holes in total.



7. Fit both of the uprights using the supplied Socket Head bolts, nuts and using washers both sides, as shown.



8. Once fully tightened, refit the exterior trim in reverse of Steps 1 to 4 and carefully close the boot lid, as the uprights are not fully aligned yet.



9. Now add the lower centre section using the four shorter Button Head bolts with nuts and washers both sides, as shown. Fully tighten them to pull both sides of the uprights together, which will align them between the lights.



10. You can now bolt the upper centre blade section in place using the four longer Button Head bolts with washers. Bolt these through the sided end plates to clamp the wing together.



11. Finally, make sure everything is tight and secure.

