

Mini Cooper S R53/56 Rear Wing Fitting Instructions

Tools needed:

- Ratchet and Socket Set
- Allen Key set
- Drill
- Drill Bits (4mm and 9mm)
- Rivnut Tool
- Ruler
- Marker Pen
- Masking Tape

Kit Includes:

- 1x AIRTEC Motorsport Wing Blade
- 2x Bracket Spacers
- 2x Mounting Brackets (left and right)
- 2x Wing uprights (left and right)
- 4x M6x16mm Hex Head bolt
- 8x M6x16mm Button Head bolts
- 12x M6 Pan Washers
- 4x M6 Mudguard Washers
- 4x M6 Nyloc Nuts
- 4x M6 Rivet Nuts

PLEASE THOROUGHLY READ THESE INSTRUCTIONS AND MAKE SURE YOU ARE FAMILIAR WITH THE STEPS BEFORE CARRYING THEM OUT



Instructions

1. Each side, measure 100mm down from the top of the window using a ruler and make a mark. **Please note: if you're racing in the Mini Clubsport Challenge series, take care to ensure this measurement is as accurate as possible, as regulations state the wing cannot be higher than the highest roof line point.**



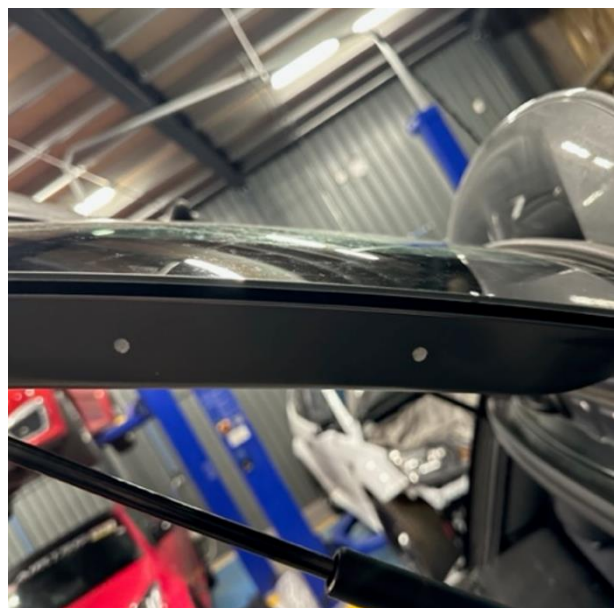
2. Open the boot and using the correct side bracket (two holes at the bottom, one at the top) line up the top of the bracket with where the mark made in Step 1, as shown. Using masking tape, temporarily fix the bracket in place and then double check the height with the ruler to confirm the bracket starts at 100mm.



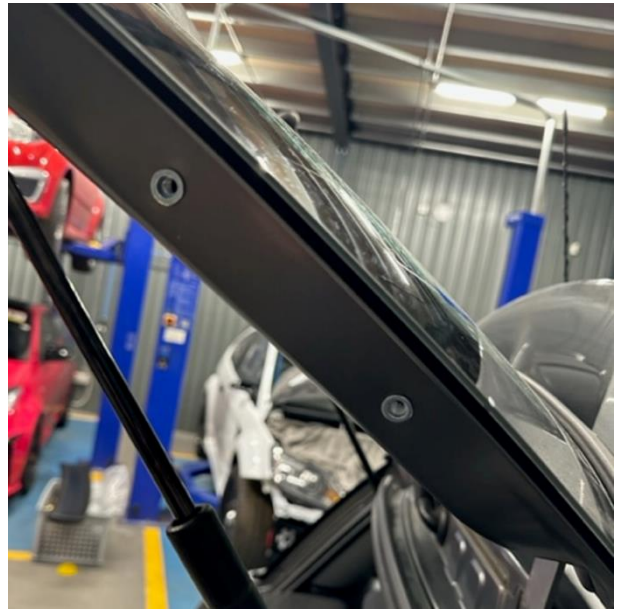
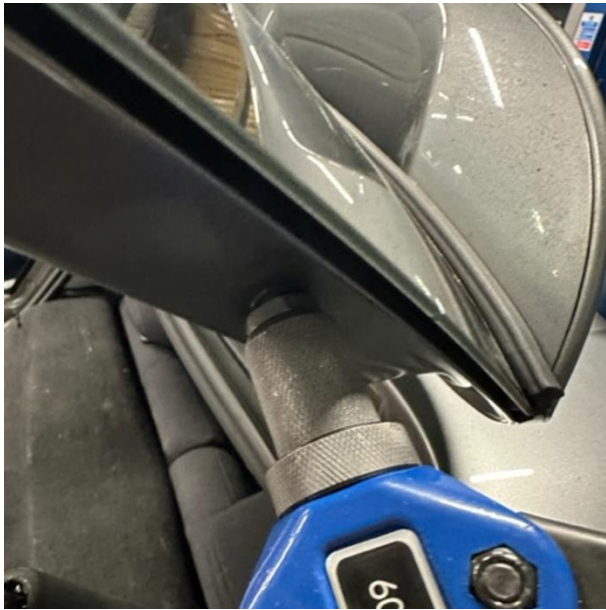
3. Open the boot and carefully mark out the exact centre of the two mounting holes in the bracket onto the boot and then remove the brackets from the car.



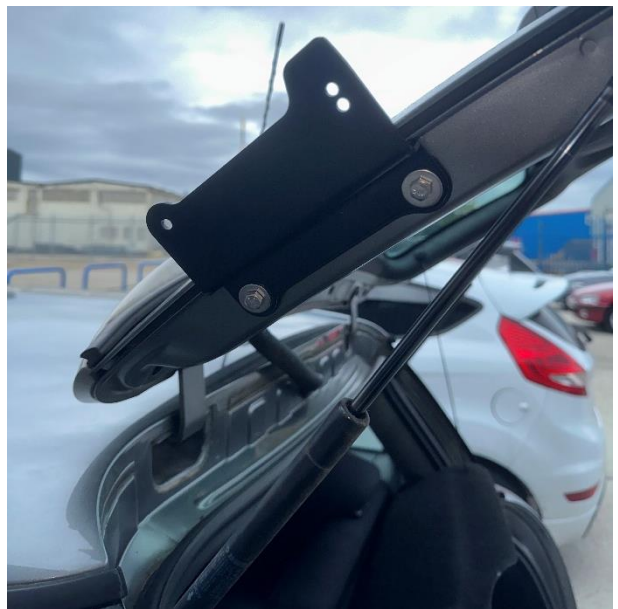
4. Starting with a 4mm drill bit, make the holes using the guide marks you made and then use a 9mm drill bit to increase the hole size so that the rivet nuts will fit.



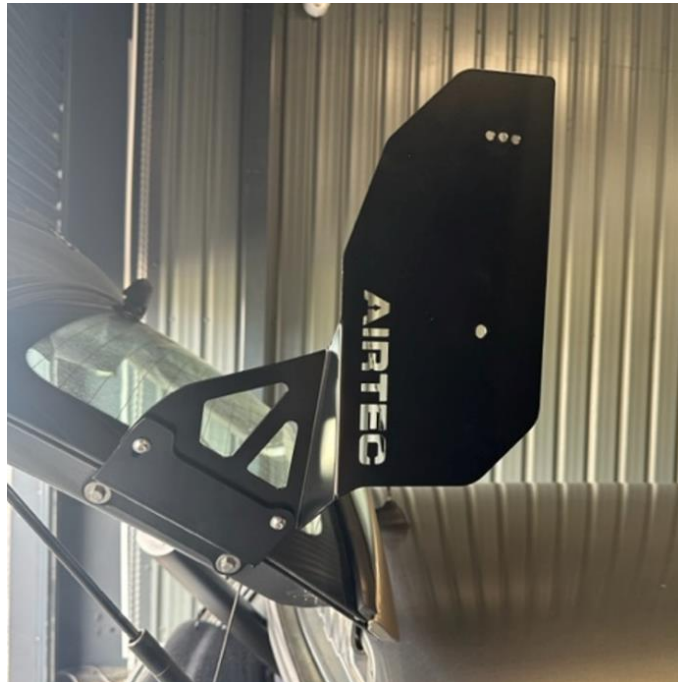
5. Using a rivet nut tool, install the supplied rivet nuts onto the car, as shown.



6. Now fit the supplied spacer in place each side before attaching the brackets onto the car using the supplied M6 Hex Head bolts with Mudguard washers.



7. Attach the end plates to the brackets using the supplied M6 Button Head bolts with washers and Nyloc Nuts. Ensure to install them in the correct orientation, as shown.



8. Using a second person to help, attach the supplied wing blade to the vehicle in your desired fixing location.



9. Finally, ensure all fixings are tight before slowly shutting the boot lid to check clearance.



AIRTEC 
MOTORSPORT

AIRTEC 
MOTORSPORT