

# F56 Mini Cooper S & JCW (Pre-Facelift/LCI) Induction Kit Fitting Instructions

## Tools needed:

- Ratchet and Socket Set
- Flat-Bladed Screwdriver
- Trim Removal Tool

## Kit Includes:

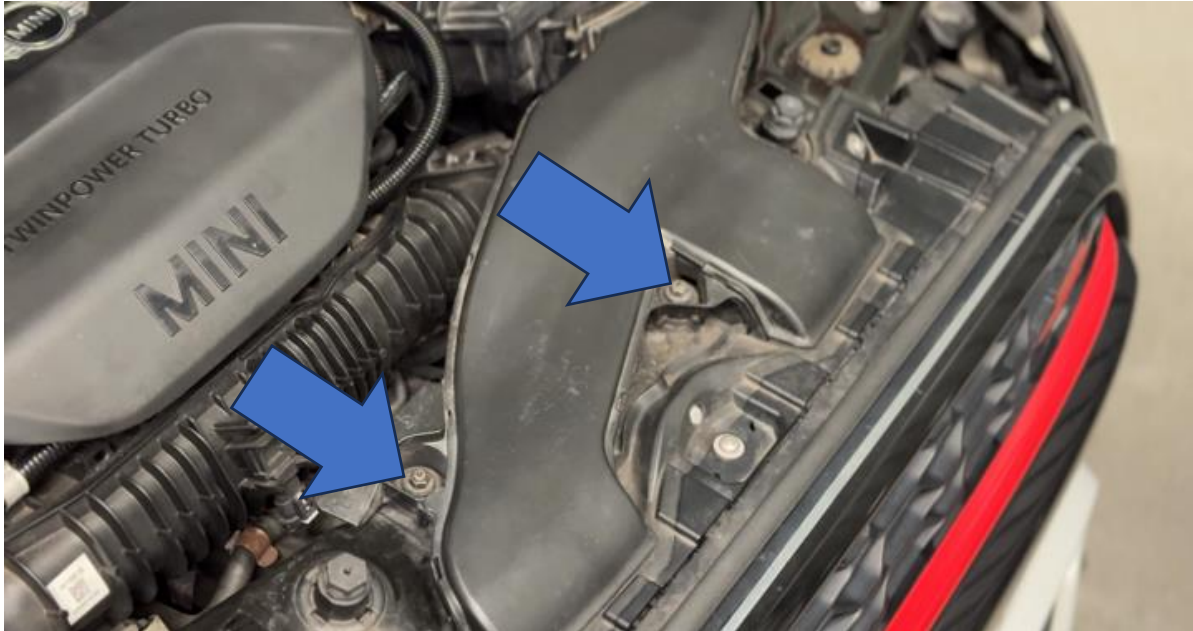
- 1x AIRTEC Motorsport Air Box (4 parts)
- 1x AIRTEC Motorsport MAF Sensor Pipework
- 1x AIRTEC Motorsport Air Filter
- 1x Pro Hoses Silicone
- 2x 80mm Jubilee Clips
- 3x M6x16mm Button Head Bolts
- 4x M6 Pan Washers
- 1x M6 Nyloc Nuts
- 2x M4x10mm Socket Head Bolts
- 2x M4 Pan Washers

PLEASE THOROUGHLY READ THESE INSTRUCTIONS AND MAKE SURE YOU  
ARE FAMILIAR WITH THE STEPS BEFORE CARRYING THEM OUT



## Instructions:

1. Start by removing the two 10mm bolts which are securing the air guide in place at the front of the car.



2. Release the MAF sensor by removing the two bolts securing it in place and then unplugging the wiring connector. Then loosen the jubilee clip securing the intake pipe to the air box using a 7mm socket and unclip the wiring loom attached to the air box (orange arrow).



3. Remove the 10mm bolt securing the air box in place and then lift the air box off the two rubber push mounts underneath.

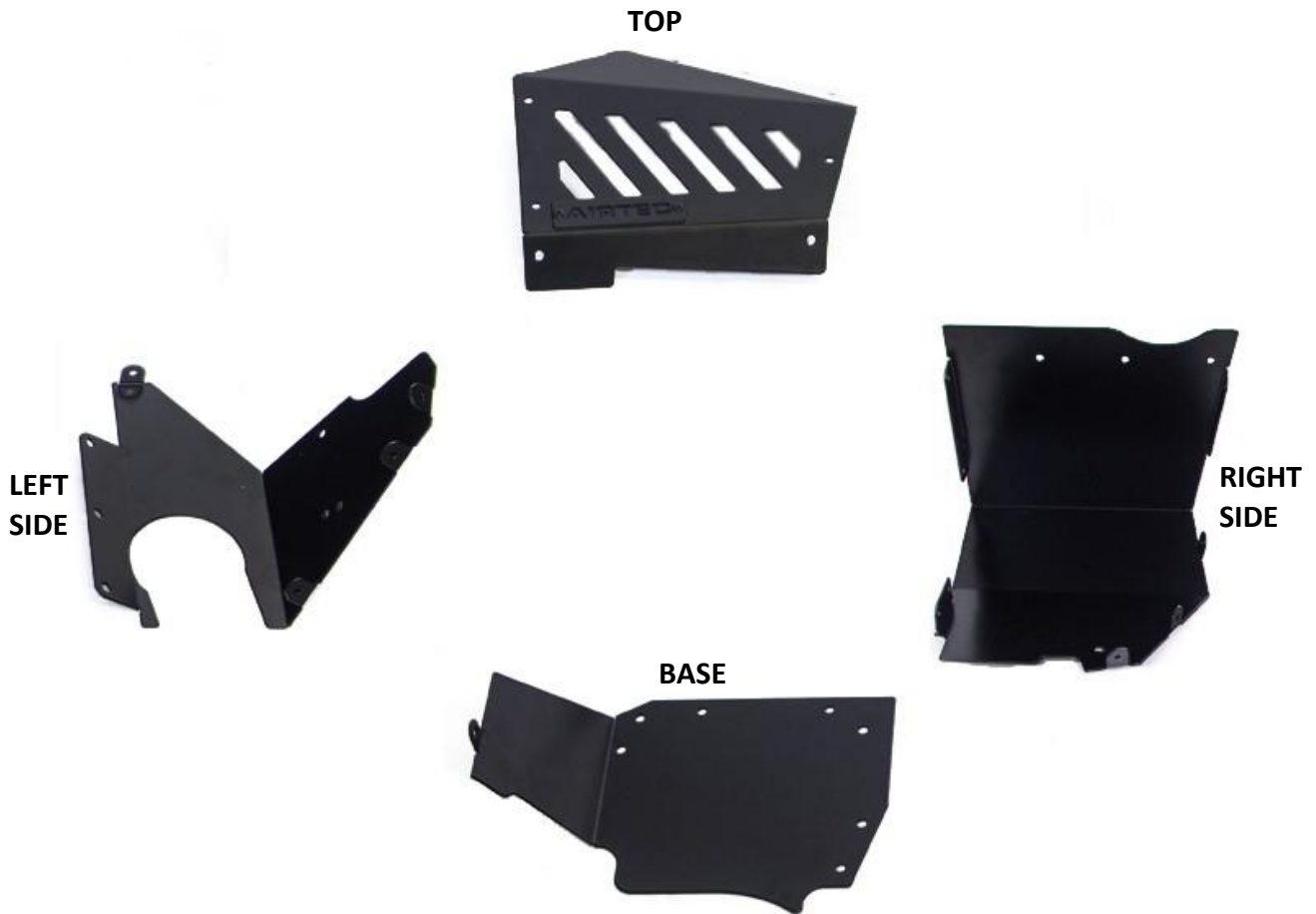


4. Now you can remove the original intake pipe by loosening the jubilee clip, as shown below.

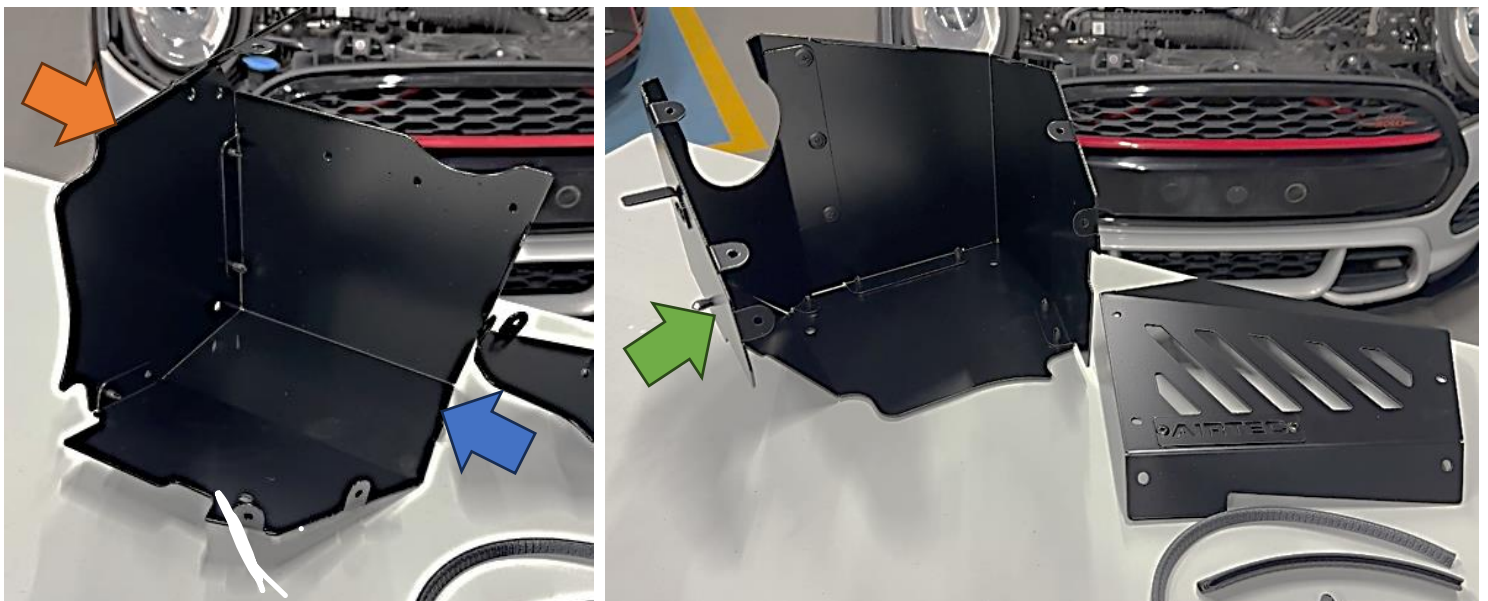




5. You will now need to build your air box up. Start by laying out the four sides and identifying which side is which using the photo below.



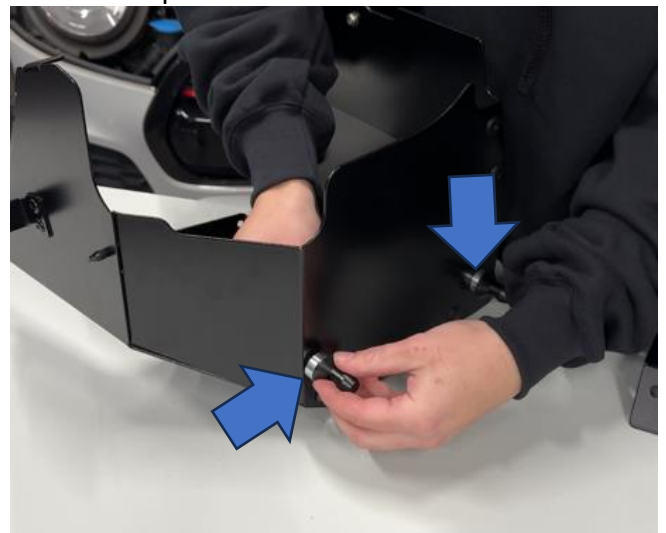
6. Start by attaching the right side (blue arrow) to the base (orange arrow) using the supplied push fittings. Then install the left side (green arrow) by overlapping it on the inside of the air box, as shown.



7. Install the three rubber trims as shown. Two of them will go on the air box lid and one where the intake pipe passes through into the air box.



8. Install the side bracket using the supplied M6x16mm Button Head bolt with a Nyloc nut and washers both sides, but do not fully tighten yet to allow adjustment later on. Then attach the two CNC push fits onto the base of the air box, using two more M6x16mm Button Head bolts with washers and spacers



9. Now install the 80mm adapter into your air filter. Then you can attach to the new MAF sensor pipework, as shown - but do not tighten to allow adjustment later on.

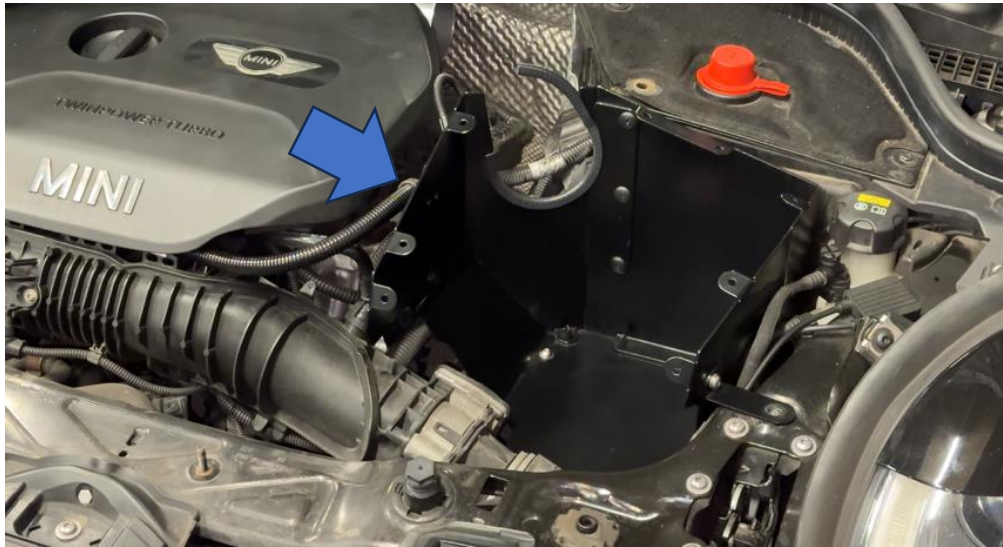


10. Install the supplied 80mm silicone hose with jubilee clip onto the original crossover pipe, but do not tighten to allow adjustment later on.





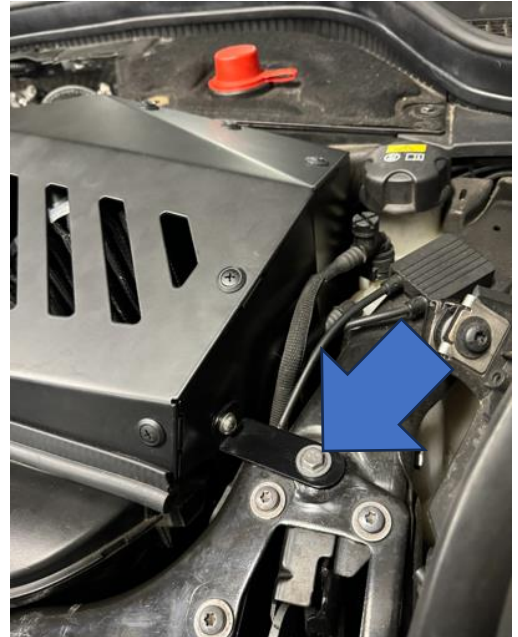
11. You can now fit the new air box in place by pushing the two CNC push fittings into the existing rubber mounting points underneath. Then attach the wiring loom unclipped in Step 2 onto the tab on the left side of the air box.



12. Now install the MAF pipe work with the air filter into the silicone hose and secure in place using the supplied 80mm jubilee clip.



13. The air box lid can now be installed using the supplied push fittings. Then secure the bracket from the air box onto the engine bay using the original fixing.



14. You can now reinstall the MAF sensor back into the new pipework using the supplied M4x10mm Socket Head bolts with washers.





15. Finally, reinstall the original air guide removed in Step 1 and then ensure every bolt and jubilee clip is fully tightened and secured correctly.



**AIRTEC**   
MOTORSPORT

**AIRTEC**   
MOTORSPORT