

Audi RSQ3 F3 Intercooler Fitting Instructions

Tools needed:

- Socket Set including Torx Bits
- Trim Removal Tool or Flat-Bladed Screwdriver
- Dremel or other suitable cutting tool (if opting to trim the bumper)

Kit Includes:

- 1x AIRTEC Motorsport Intercooler
- 2x RSQ3 F3 Crash Bar Feet
- 1x Lower Crash Bar Support
- 4x M6x16mm Socket Head Bolts
- 4x M6 Pan Washers
- 2x M12x100mm Bolts
- 4x M12 Washers
- 2x M12 Nyloc Nuts

PLEASE THOROUGHLY READ THESE INSTRUCTIONS AND MAKE SURE YOU ARE FAMILIAR WITH THE STEPS BEFORE CARRYING THEM OUT



Instructions

1. Raise the vehicle into the air using the manufacturer's guidelines either with a vehicle lift or with a jack and axle stands.
2. Open the bonnet and remove the catch handle highlighted by pressing in on the back of the and lifting it up.



3. Now pull the plastic slam panel from the edge and then remove from the vehicle, this will reveal two T25 screws that you will need to undo.



4. Working in the wheel arch undo three T25 bolts and peel the arch line back enough to gain access so that you can undo the T25 bolts, as shown.



5. Feeling inside the wheel arch, underneath the liner you will be able to feel the clip for the bottom of the outer wheel arch trim. Squeeze this together as you gently pull on the bottom of the trim to release it and then work your way round until you have enough removed that the corners of the bumper would be free to come out.



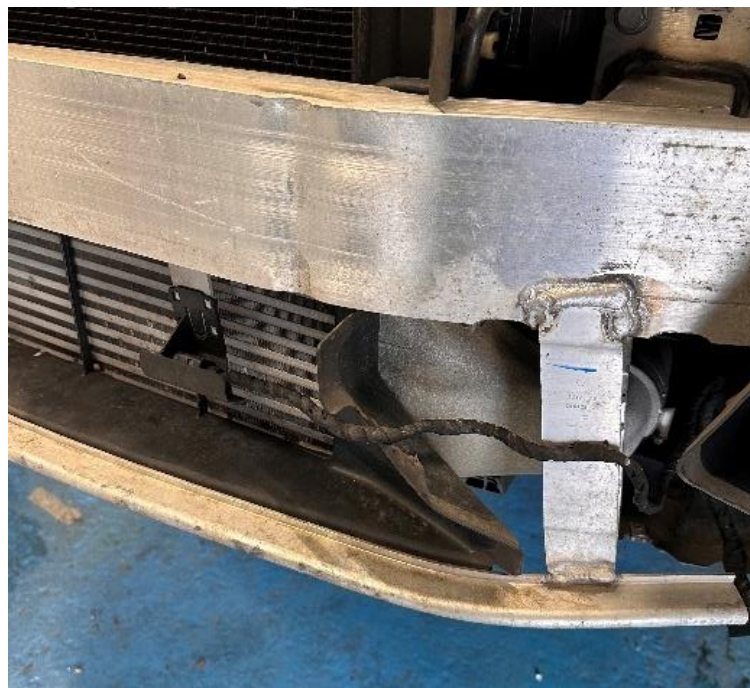
6. Working underneath the car, remove the plastic front guard by undoing six T27 bolts and place it aside. Undo the six T25 pictured plus the three T27 Torx bolts holding the underside of the bumper in place. Once removed, it will reveal the last two T27 bolts to undo.



7. You can now release the bumper corners. As you pull the bumper away, you will need the help of another person to disconnect the wiring harness on the right-hand side as you look from the front of the vehicle. The bumper can then be placed in a position so that you can access the washer jets to disconnect and drain them using a suitable container to catch any fluid. The far side washer jet will need to be unclipped along the bumper to be removed.



8. Remove the temperature sensor from the crash bar by squeezing the front as you pull the back of the sensor and then unclip the loom from the lower crash bar leg.



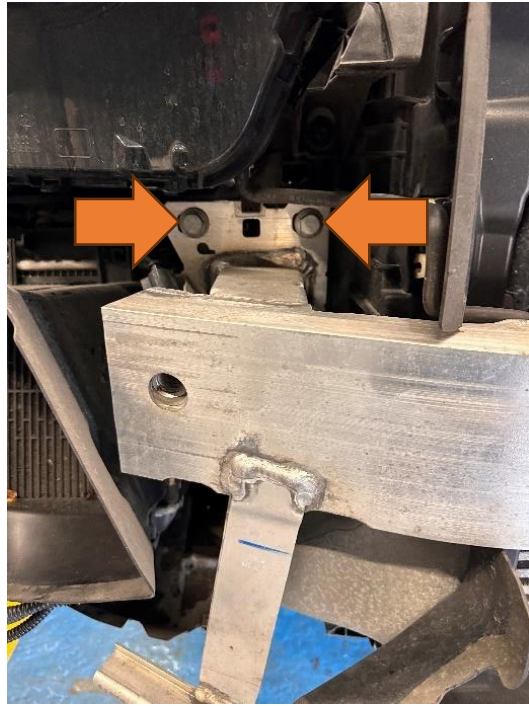
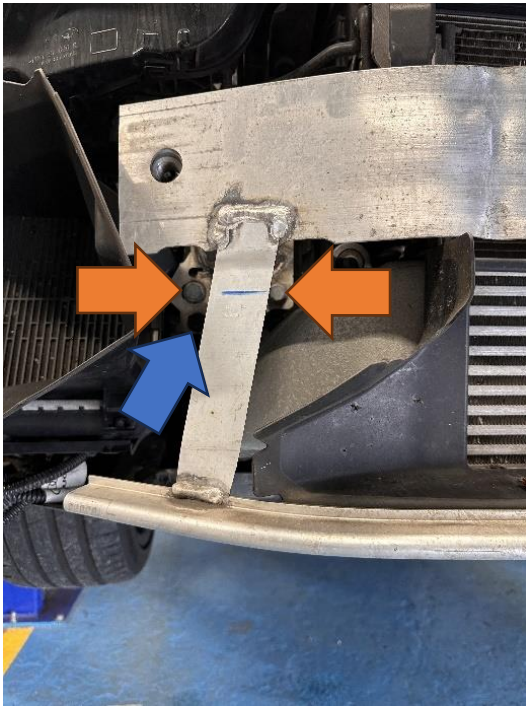
9. Unclip the wiring loom connected to the right-hand auxiliary radiator duct and then remove the duct by pulling it out from the bottom and then down from the top.



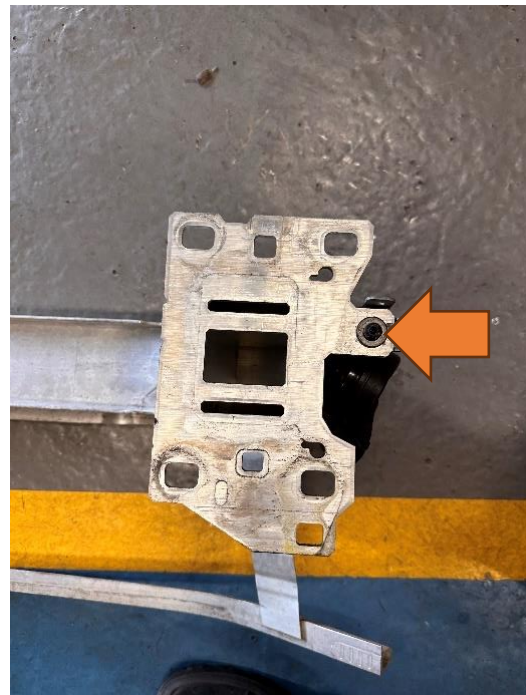
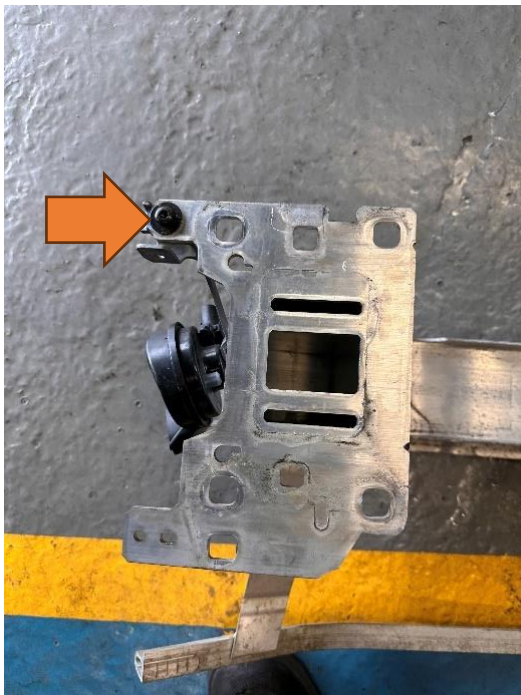
10. Unplug the horns by squeezing the connectors and then unclip the wiring loom connected to the crash bar.



11. Release the crash bar by removing the T27 bolt (blue arrow) at the bottom of each crash bar foot followed by four 16mm bolts each side (orange arrows). To remove the crash bar, you will need to slide it down first to release it from a plastic clip before tilting it forward.



12. Remove each of the horn brackets from the crash bar by removing the T27 bolts located on the back of each crash bar foot. Keep these aside as they will be reinstalled onto the new crash bar feet later on.



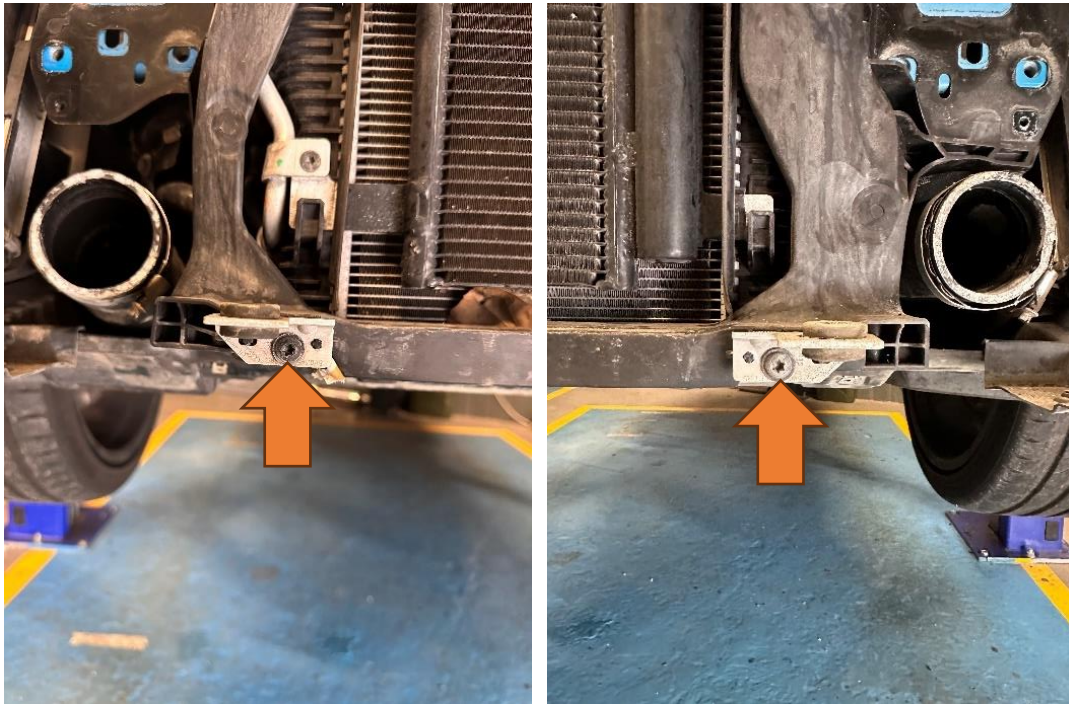
13. Unclip the tubing connected to the air guide on each side and then remove the two air guides by pulling them and put aside, these are not reused.



14. Undo the two jubilee clips to release the silicone hose connectors followed by the two T27 bolts holding the top of the intercooler in place. You can now tilt the intercooler forwards and lift it to remove it from the car.



15. Remove the two lower T27 Torx bolts and the brackets.



16. Now reinstall the horn brackets on to your new crash bar feet using the original bolts removed in Step 12 (please note: these bolts may be black or silver).



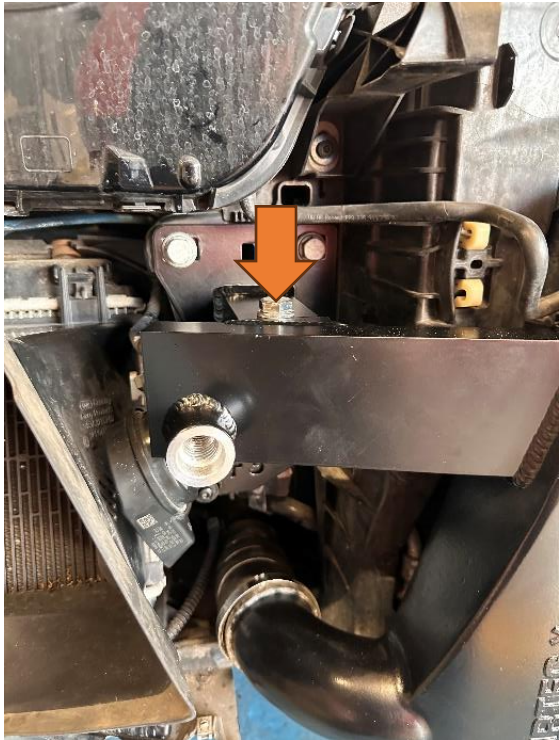
17. Install the crash bar feet onto the car using the original bolts and reconnect the horn wiring. However, do not fully tighten the bolts so that they still movement.



18. Install the lower bar onto the intercooler using the supplied M6 bolts with washers, as shown. These brackets are slotted so that if needed you can adjust the position of the bar once it is on the car.



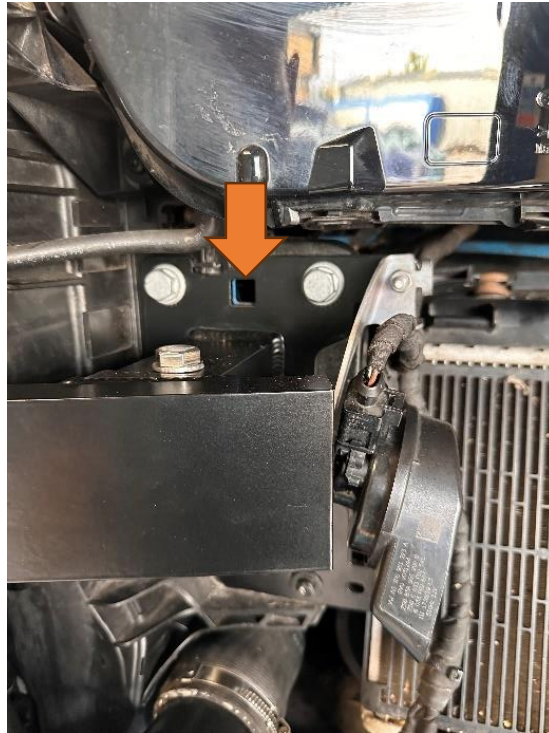
19. Using a second person, you can now install the new intercooler. We recommend using a spray lubricant on the silicone hoses as this allows them to be installed onto the intercooler as you install the legs into the crash bar feet. Once fitted, use the supplied bolts to hold the crash bar to the feet and tighten the jubilee clips.



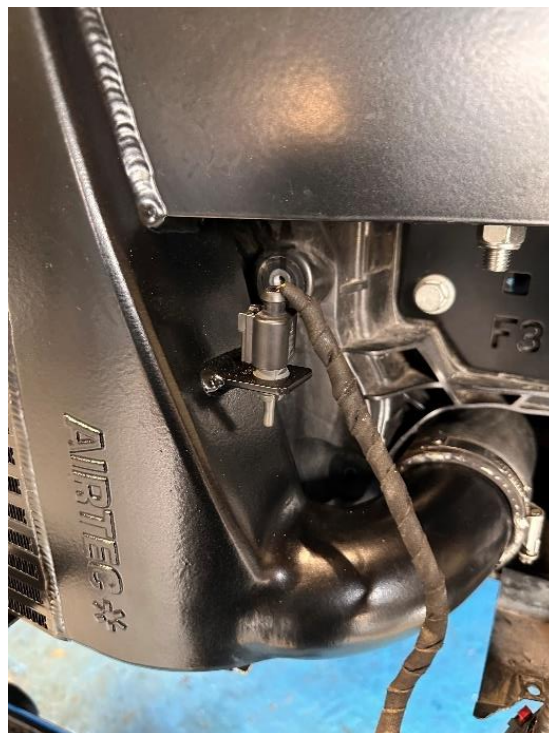
20. The lower brackets can now be reinstalled using the original T27 fittings.



21. Using the exposed hole on the crash bar foot as a guideline, manoeuvre it as close as you can with corresponding hole on the chassis leg. Use a second person or a jack to raise the height of the intercooler and then fully tighten the bolts holding the crash bar foot on.



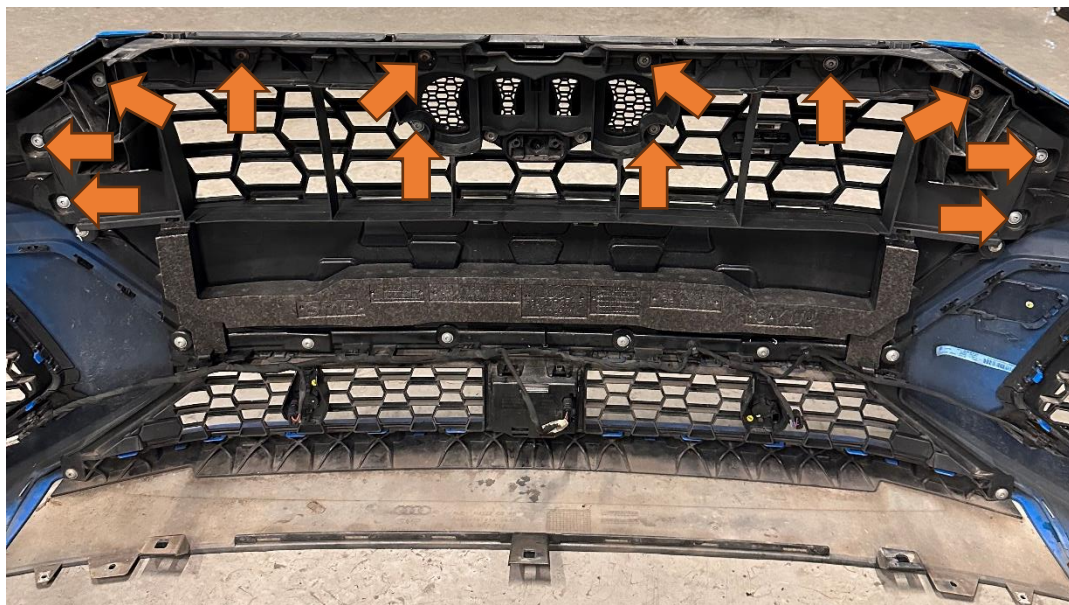
22. Install the temperature sensor into the bracket attached to the intercooler.



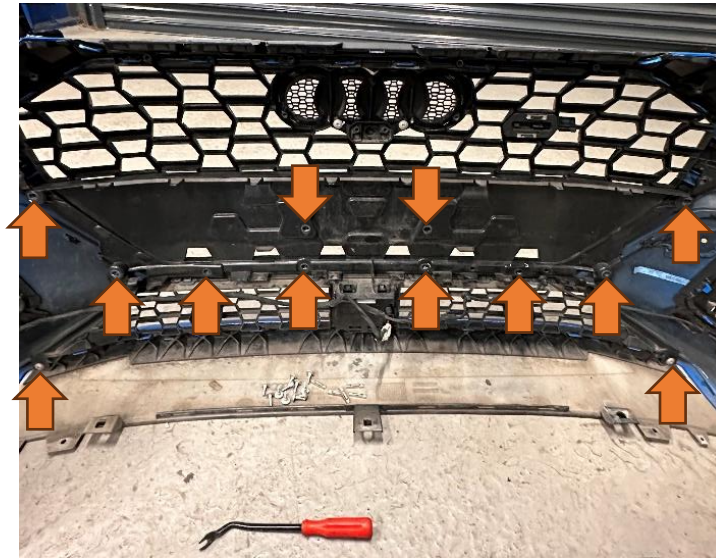
23. **Please note:** The following steps are **optional**, as it requires permanently cutting the bumper grille. However, we recommend doing so to increase air flow to the intercooler. If you do not wish to cut the blanking plate at the back of the grille, proceed to Step 29.
24. Looking at the back of the front bumper you will need to remove the foam and then unclip the two central front parking sensors and front radar sensor (if fitted). Then unclip the wiring loom from the lower part of the centre grille.



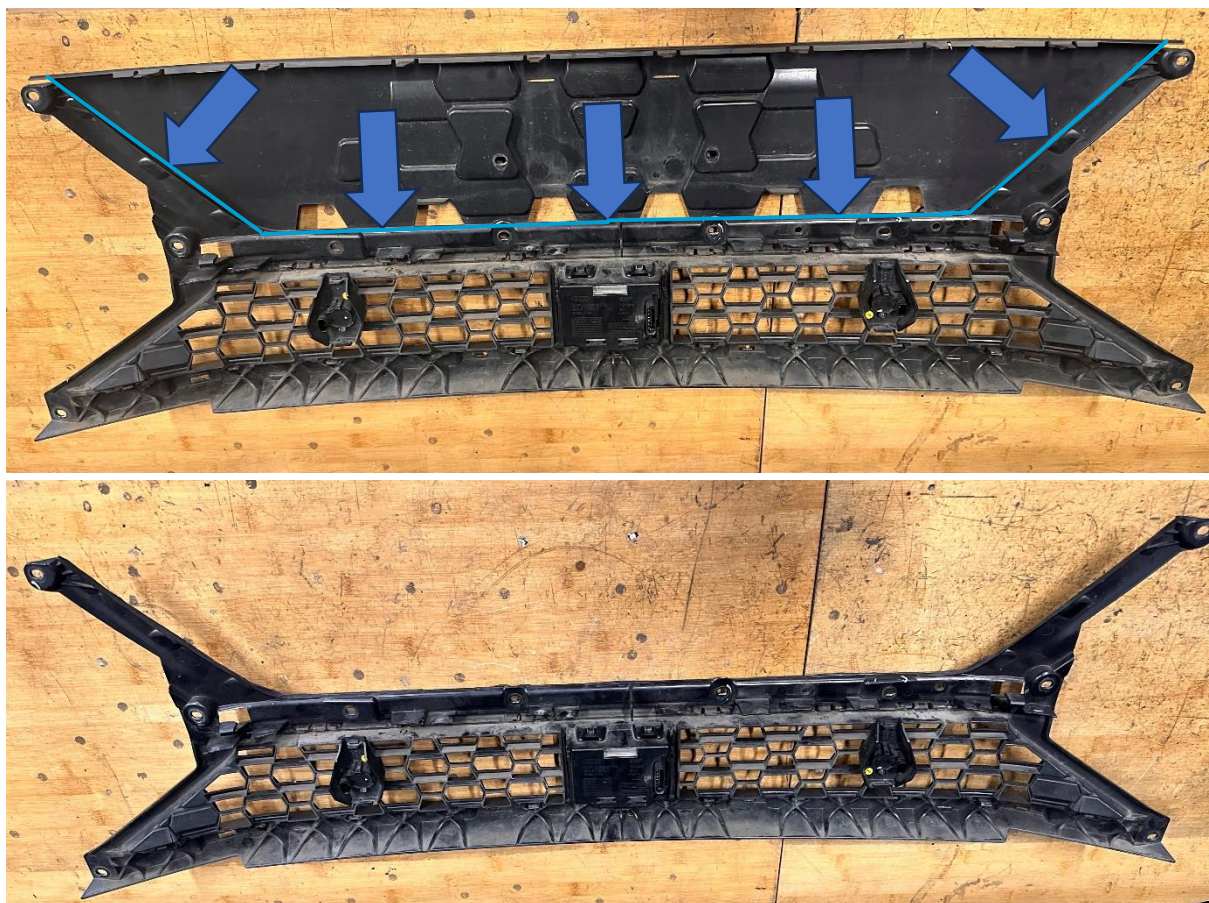
25. Locate the 12 T25 Torx bolts holding the upper part of the grille in place and remove them and place the top piece aside.



26. Undo the 12 T25 Torx bolts on the lower grille and then remove the metal clips using a trim removal tool or flat-bladed screwdriver. The grille will then start to come away as you release the plastic clips along the lower edge.



27. With the grille removed, we recommend cutting along the ridge of the plastic, as shown. Use a suitable cutting tool, however it is up to you how much you want to remove exactly.



28. Reinstall the lower grille first and then the upper grille in reverse of Steps 25 to 26. The sensors and wiring loom can now be clipped back in.



29. Finally, refit the auxiliary radiator surround and bumper in reverse of Steps 1 to 14, making sure to reroute the far side washer jet hose back into place.

