

# Audi RS3 (8V) Left-Hand Drive Induction Kit Fitting Instructions

## Tools needed:

- Socket set including Torx bits
- Hose clamp pliers
- Jubilee driver
- Trim clip removal tool

## Kit Includes:

- AIRTEC Motorsport alloy induction pipe
- AIRTEC Motorsport induction shield
- AIRTEC Motorsport group A air filter
- AIRTEC Motorsport alloy trumpet
- 1x bracket
- 5x M6x16mm Button head bolts
- 10x M6 pan washers
- 6x M6 Nyloc nuts
- 1x M6x16mm Hex head bolts
- 1x M6x25mm Hex head bolt
- 2x M6 mudguard washers
- 3x larger cable ties
- 2x Pro Hoses silicone hoses
- 3x 120mm Jubilee clips
- 1x 100mm Jubilee clip

PLEASE THOROUGHLY READ THESE INSTRUCTIONS AND MAKE SURE YOU ARE  
FAMILIAR WITH THE STEPS BEFORE CARRYING THEM OUT



## Instructions:

1. Remove the engine cover by firmly but carefully pulling it from the lower right-hand corner.



2. Using hose clamp pliers, release the tension clip from the hose secured to the air box and then disconnect the hose.



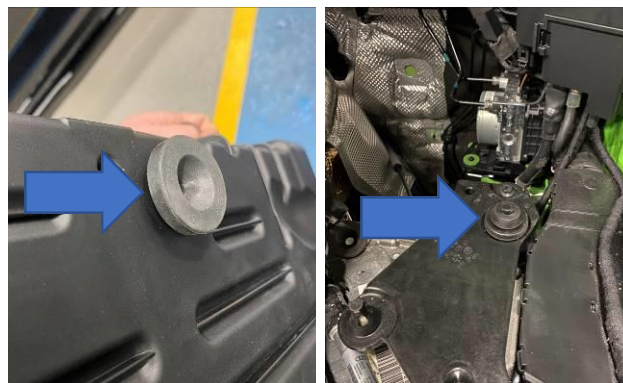
3. Use a trim clip removal tool or similar to unclip the breather hose from the air box by pulling it towards the front of the car. Once removed, slide the metal clip up and off the air box.



4. Loosen the jubilee clip holding the intake hose to the induction pipe and then disconnect it. The air box is mounted on three rubber bushings. To remove it, tilt the back of the air box upwards and then firmly but carefully pull it from the mounts and out of the engine bay.



5. Two of the original rubber mounts are used to install your new AIRTEC Motorsport heat shield, so remove them from either the air box or check if they remained in the car.



6. On the intake pipe, remove the vacuum pipe by squeezing the clip and pulling it. Then locate the bolt hidden from view on the underside of the pipe and remove with a T27 Torx bit.





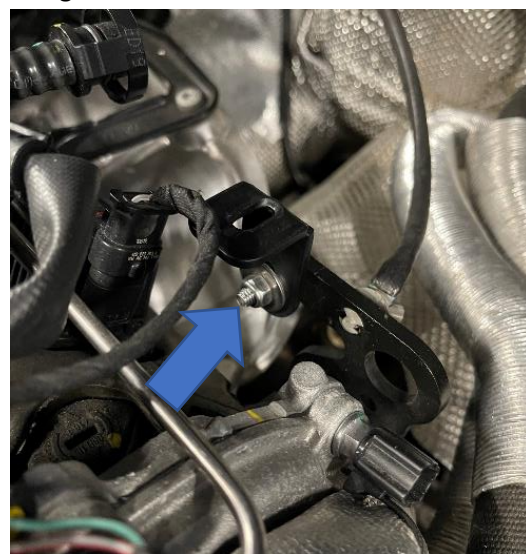
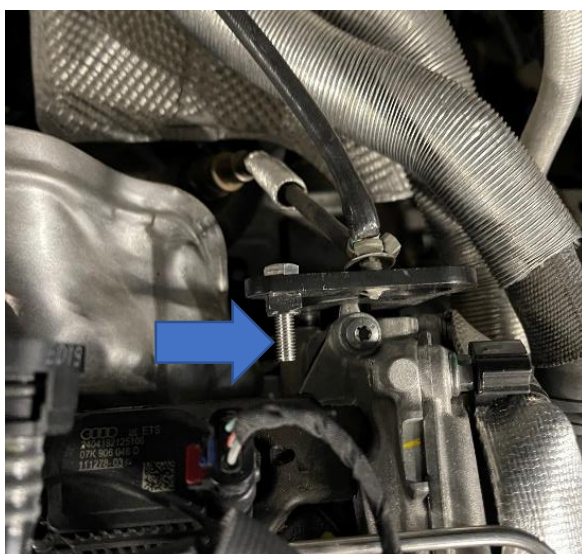
7. Using hose clamp pliers, release the tension clip holding the induction pipe to the turbo elbow and then remove the pipe from the car.



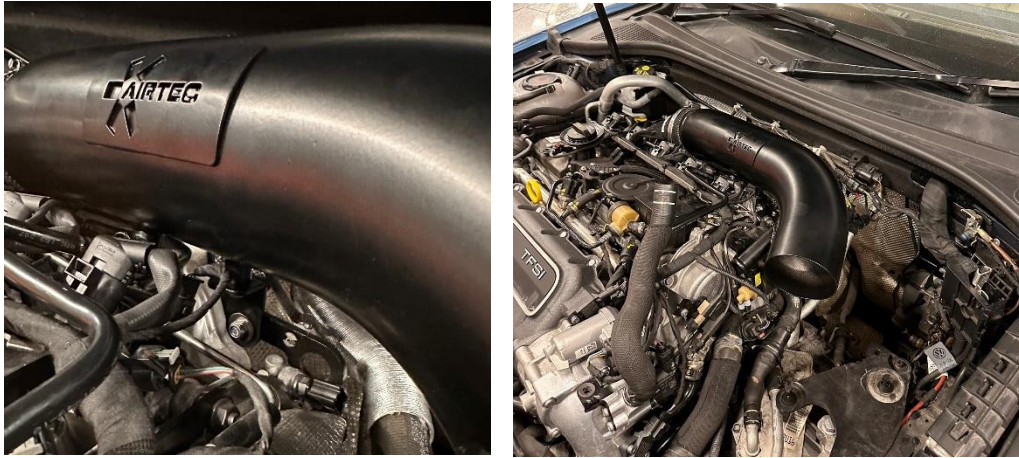
8. Install the new silicone reducer onto the turbo elbow using the 100mm jubilee clip supplied.



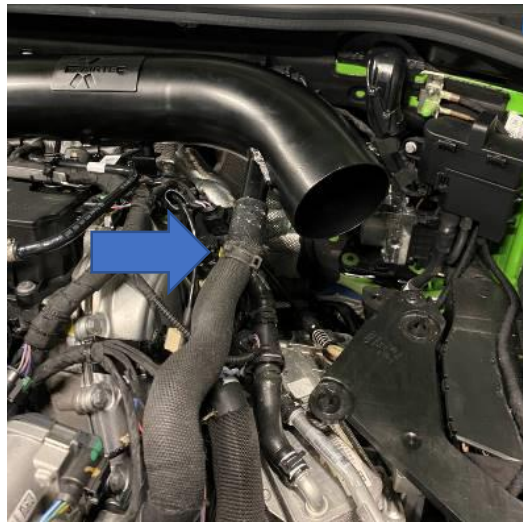
9. Install the bracket onto the car as pictured below by first installing the supplied M6x25mm Hex Head bolt with washer through the **back** of the original bracket until tight and then install the bracket onto the bolt and secure using an M6 nut and washer.



10. Install the pipe into the silicone at the rear with a jubilee clip left loose and using the supplied M6x16mm Hex Head bolt with washer, attach the bracket fitted in Step 9 to the pipe. Once happy with the positioning, proceed to tighten both the jubilee clip and bracket.



11. Clip the vacuum hose back onto the new pipe and reinstall the hose and tension clip removed in Step 2. If necessary, loosen the clip on the other end of the hose and rotate it to allow additional clearance.

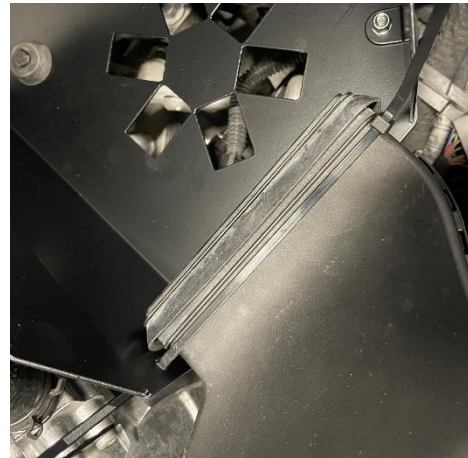
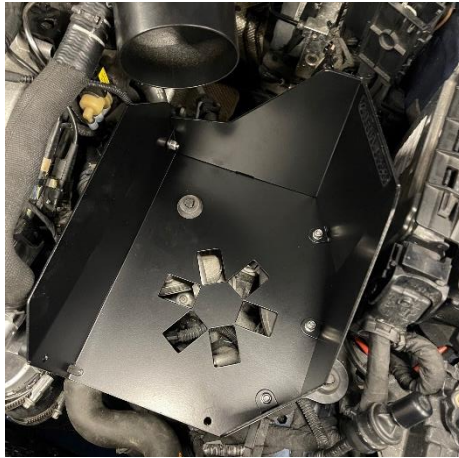


12. Your new AIRTEC Motorsport heat shield will need to be assembled. Attach the side to the base using the supplied M6 hardware. It should look like the assembled model below when complete.





13. Install the two rubbers onto the base of the new air box. The air box can then be installed into the car by pushing the rubbers down onto the original posts. The original air scoop rests on the front of the induction shield using the large cable ties to secure the scoop by using the holes in the induction shield.



14. Install the silicone coupler and trumpet to the induction pipe with jubilee clips and tighten.



15. Locate the breather removed in Step 3 and using the remaining cable tie find a suitable location to secure it as close to upright as you can.



16. Finally, install the air filter onto the trumpet and once happy with the positioning, tighten the jubilee clip. Ensure all clips and bolts are fully tightened and then re-install the engine cover.

