

Ford Focus Mk3 ST250 Big Boost Pipe Kit Fitting Instructions

Tools needed:

- Ratchet Set
- 7mm Socket
- 8mm Socket
- 10mm Socket
- Hose Driver

Kit Includes:

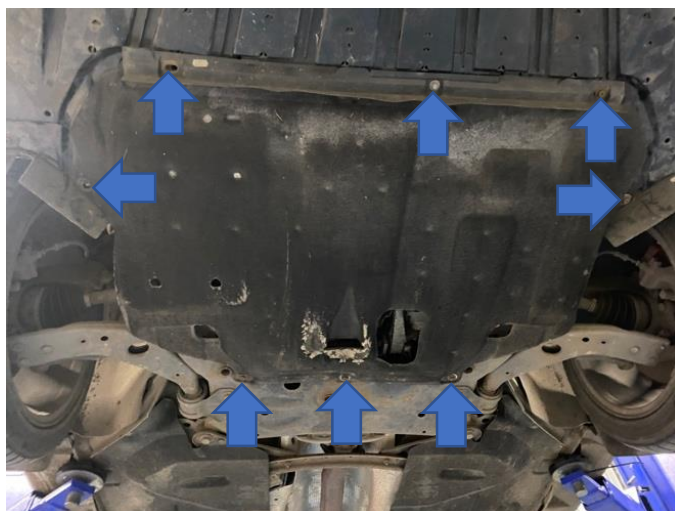
- 1x AIRTEC Motorsport Hot Side Alloy Boost Pipe
- 1x AIRTEC Motorsport Cold Side Alloy Boost Pipe
- 4x Pro Hose Silicone Hoses
- 1x Mounting Bracket
- 2x Bolts and washers
- 7x 80mm Jubilee Clips
- 1x 60mm Jubilee Clip

PLEASE THOROUGHLY READ THESE INSTRUCTIONS AND MAKE SURE YOU ARE FAMILIAR WITH THE STEPS BEFORE CARRYING THEM OUT



Instructions:

1. Remove the eight T25 Torx bolts that secure the undertray to access the hot side boost pipes from the turbo to intercooler and cold side pipes from intercooler to the throttle body.



2. Locate the original hot side boost pipe from the turbo and remove it. Then install the 90-degree silicone pipe that reduces in diameter one side directly onto the turbo as shown. Use the one 60mm jubilee clip supplied on the turbo side, but leave it loose to allow adjustment.



3. You will now need to install the mounting bracket supplied onto the new hot side boost pipe as shown. Use a 13mm socket to secure the supplied Hex Head bolt with washer in place, but do not fully tighten yet as you will need some adjustment later.



4. Install the new pipe into the silicone hose from Step 2 with a supplied jubilee clip, but do not tighten. Then locate the pipework's middle bracket onto the thread shown using the M8 bolt with washer supplied, and secure the last bracket in place by removing and reinstalling the bolt located on the gearbox as shown. You can now fully tighten all bolts and **BOTH** clips.



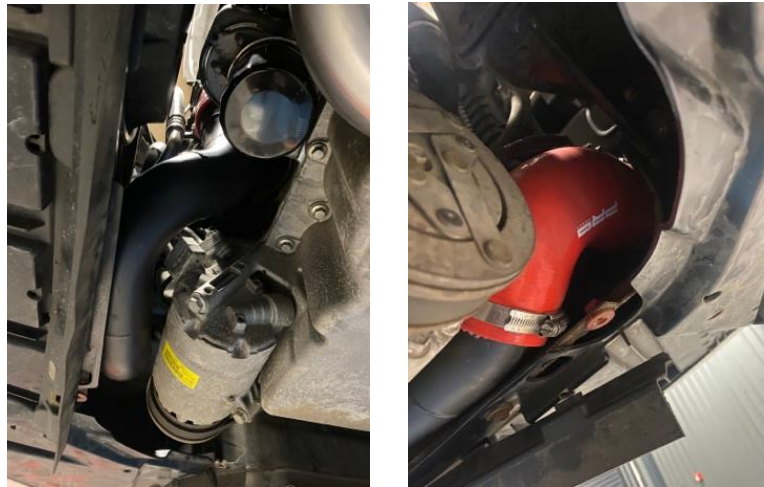
5. Install the final silicone hose for the hot side in place by fitting it onto the alloy pipework and directly to the intercooler as shown. Use the supplied jubilee clips and fully tighten.



6. To install the cold side pipes, start by locating and removing the hose to the throttle body from the top of the engine bay. Then fit the straight silicone hose onto the new cold side pipework as shown and fully tighten with a supplied jubilee clip. Attach to the throttle body and once happy with the fitment, tighten the jubilee clip from the top of the engine bay.



7. The cold side pipework can now be completed by installing the remaining silicone hose onto the new pipework and then directly onto the intercooler. Once you are happy with the fitment fully tighten all of the hoses in place using the supplied jubilee clips.



8. Finally, check that each and every clip and bolt has been fully secured and tightened with no clearance issues and then reinstall the undertray.

