

# Ford Focus Mk2 ST225 RS-Style Top Pipe Fitting Instructions

Tools needed:

- Ratchet and Socket Set
- Hose Clamp Driver or Flat-Bladed Screwdriver
- Trim Removal Tool
- T20 Torx
- T25 Torx

Kit Includes:

- 1x AIRTEC Motorsport RS-Style Crossover
- 1x AIRTEC Motorsport Trumpet
- 1x AIRTEC Motorsport Air Filter
- 1x Mounting Bracket
- 1x Billet Mounting Post
- 2x 90mm Jubilee Clips
- 3x M6x16mm Hex Head Bolts
- 2x M6 Penny Washers
- 1x M6 Pan Washer
- 2x 12mm Socket Head Bolt
- 2x M5 Pan Washers
- 1x Vac Pipe Extension
- 1x Pro Hoses Silicone Hose
- 1x MAF Sensor Loom Extension

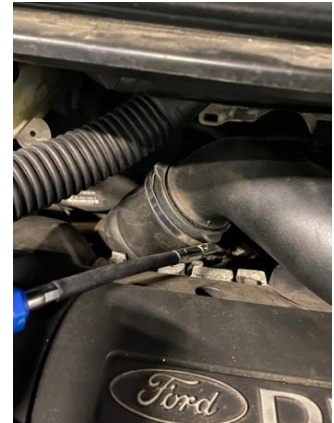
PLEASE THOROUGHLY READ THESE INSTRUCTIONS AND MAKE SURE YOU ARE FAMILIAR WITH THE STEPS BEFORE CARRYING THEM OUT



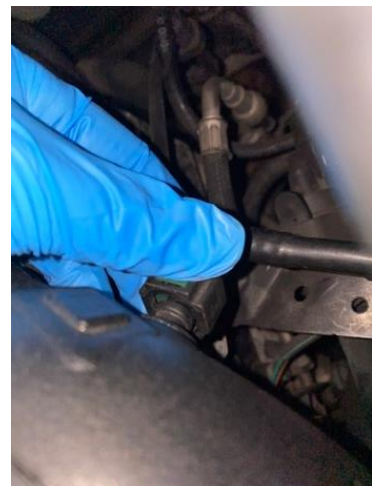
**AIRTEC**   
MOTORSPORT

## Instructions:

1. Start by loosening the jubilee clips using a 7mm socket on the original crossover pipework.



2. Now remove the two bolts that are located behind the crossover pipe. You will also need to remove the vacuum pipe from the crossover by pressing on the green tab and pulling the pipe off. The crossover pipe can now be removed from the car.



3. Remove the slam panel by using a screwdriver and a trim tool to remove all eight plastic push clips. Once removed, you will be able to access the air feed, which will also need to be removed by releasing the two push clips.





4. Now remove the pipework which was located under the air feed and then move across to the ECU cover, which can be removed by carefully but firmly pulling it towards you. Once removed, you can undo the three T15 Torx bolts which secure the ECU in place.



5. Unplug the MAF sensor then remove the vacuum pipework by releasing two T15 Torx bolts. You can then remove it from the plenum by holding the red part and pulling the pipe.



6. Disconnect the brown plug attached to the vacuum pipework and then release the ECU by turning it onto its side and carefully placing it down in the engine bay – there is no need to unplug it. The air box can now be removed by pulling it from its rubber mounts.





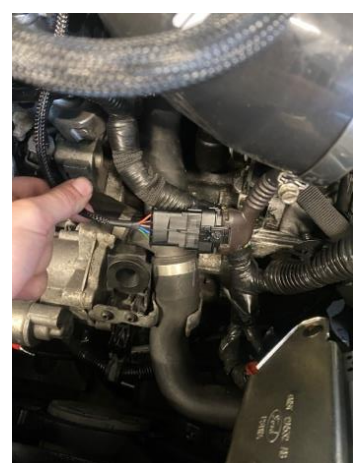
7. Now that the original intake has been removed you can remove the 10mm bolt from the top of the engine and install the threaded boss in its place, as shown.



8. Install the crossover pipe into the original hose and secure. Then install the bracket onto the pipework and attach to the thread located on the back of the engine. Also fit the crossover onto the threaded boss as shown and secure.



9. Remove the MAF sensor from the original intake pipe, install into the new crossover pipework and plug in the MAF sensor wiring extension loom as shown.





10. Fit the CustomMod vac pipe using the separate fitting instructions provided in the packet. Also fit the Pro Hoses silicone connector as shown.



11. Now install the AIRTEC Motorsport ECU holder. Carefully turn the ECU to the correct position as shown then align it with the back of the casing. Remount the ECU into the holder by reusing the Torx bolts removed in Step 4. You can then clip the front of the casing on and push the fittings on the back of the casing through the tabs that located the original air box.



12. Finally, install the air filter and trumpet with the supplied jubilee clips. **Do not over tighten – the trumpet as it can crush.**

