

Mini R56 Torque Mount Fitting Instructions

Tools needed:

- 17mm Socket / Spanner
- Ratchet

Kit Includes:

- AIRTEC Torque Mount
- Powerflex Bushings
- Bushing Inserts

PLEASE THOROUGHLY READ THESE INSTRUCTIONS AND MAKE SURE YOU ARE FAMILIAR WITH THE STEPS BEFORE CARRYING THEM OUT



Instructions:

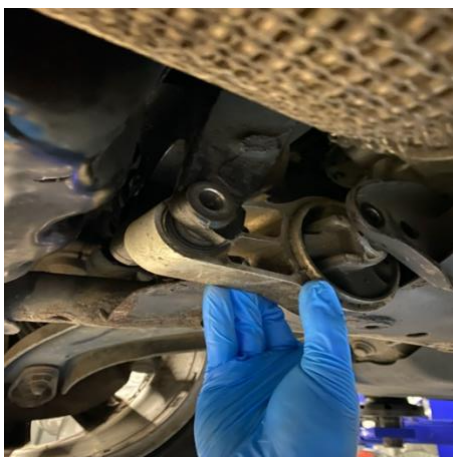
1. Start by removing the 17mm bolt from the front of the engine mount.



2. Now remove the 17mm bolt securing the other end of the torque mount in place.



3. The stock torque mount can now be removed.



4. You can now install your AIRTEC torque mount in reverse of removal reusing the original hardware.

