

Ford Fiesta Mk8 ST Hot Side Charge Pipe Fitting Instructions

Tools needed:

- Ratchet & Socket Set

Kit Includes:

- 1x AIRTEC Motorsport Pipe (long)
- 1x AIRTEC Motorsport Pipe (short)
- 1x Pro Hoses Silicone Pipe
- 2x Jubilee Clips
- 1x CNC take off blank with O-Ring
- 3x M6x12mm Socket Head Bolts

PLEASE THOROUGHLY READ THESE INSTRUCTIONS AND MAKE SURE YOU ARE FAMILIAR WITH THE STEPS BEFORE CARRYING THEM OUT

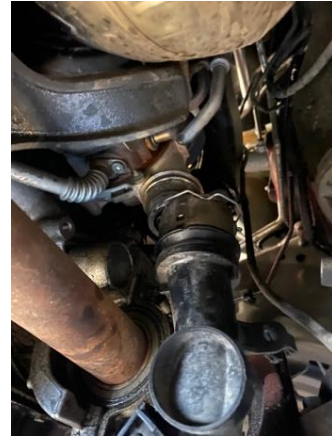


Instructions:

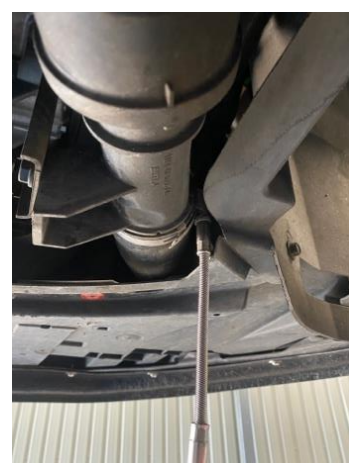
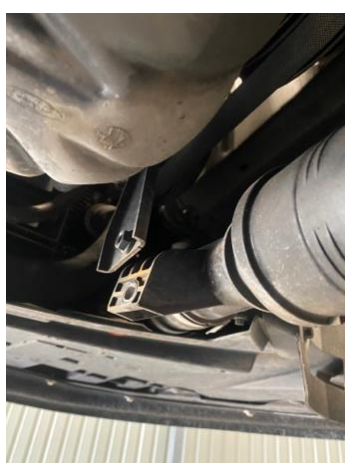
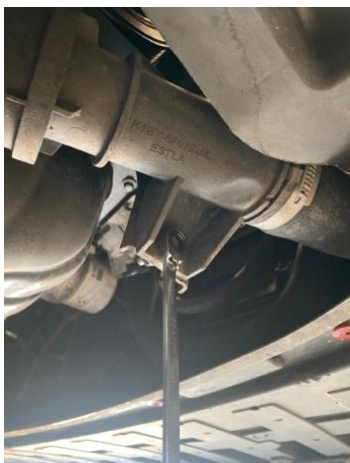
1. Start by removing the six T25 Torx bolts and two plastic clips to release the undertray from the vehicle.



2. Locate the boost pipe coming from the turbo at the back of the engine. Release the wiring from the clip attached to the pipework then release the clip securing the pipework to the turbo. Release it by lifting the clip up with a flat-bladed screwdriver until the clip makes a 'click' sound.



3. Remove the 10mm bolt securing the pipework to the vehicle then loosen the 7mm jubilee clip, which secures the resonator pipe to the boost hose. The original charge pipe can now be removed from the vehicle.



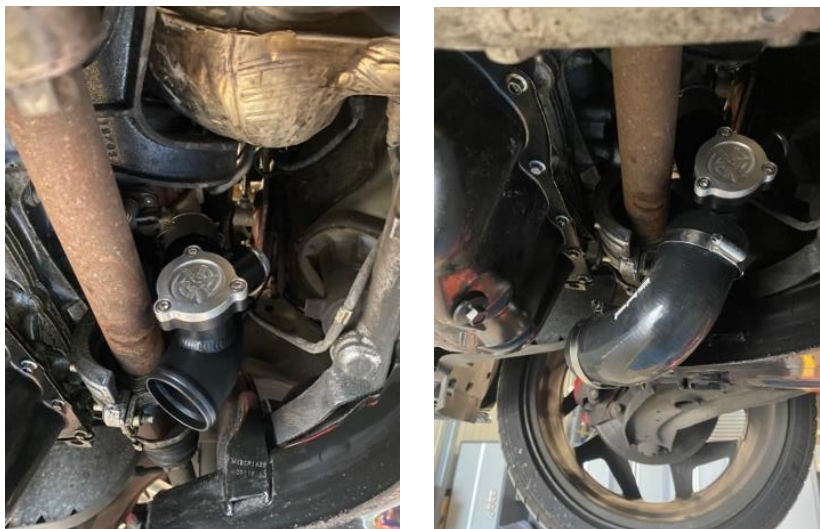
4. If you are **not** installing a recirculation valve, you can install the supplied O-ring onto the recirculation valve blank and fit to the pipework using a 5mm Allen key.



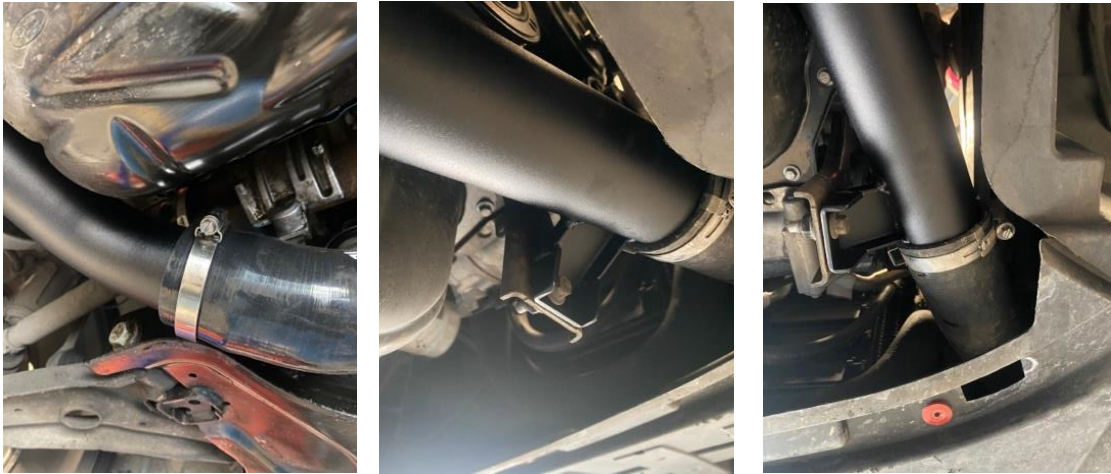
5. Remove the O-ring from the original pipework and install it into the new AIRTEC Motorsport pipe. Then swap the clip over, making sure it's fitted exactly as shown below. You will also need to swap the clip that secures the wiring loom over as well.



6. Install the charge pipe by attaching it using the same clip and reattach the wiring loom. Then install the silicone pipe onto it using the supplied jubilee clips.



7. The pipework can now be installed into the silicone hose and mounted onto the car by reusing the original 10mm bolt removed in Step 3. Then complete the installation by attaching the pipe to the original boost hose using the original jubilee clip.



8. Finally, check that everything has been installed and secured in place correctly, and refit the undertray in reverse of removal.

