

# Mini R56 Cooper S De-Cat Downpipe Fitting Instructions

## Tools needed:

- Lifting equipment to safely work underneath the car
- Ratchet set
- 8mm Socket
- 13mm Socket
- 13mm Spanner
- 15mm Socket
- 22mm Lambda/Oxygen Sensor Socket
- 6mm Allen Key

## Kit Includes:

- 1x AIRTEC Motorsport De-Cat Downpipe
- 1x Mounting bracket
- 1x M8x20mm Allen Key Bolt
- 1x M8 Penny Washer

PLEASE THOROUGHLY READ THESE INSTRUCTIONS AND MAKE SURE YOU ARE FAMILIAR WITH THE STEPS BEFORE CARRYING THEM OUT

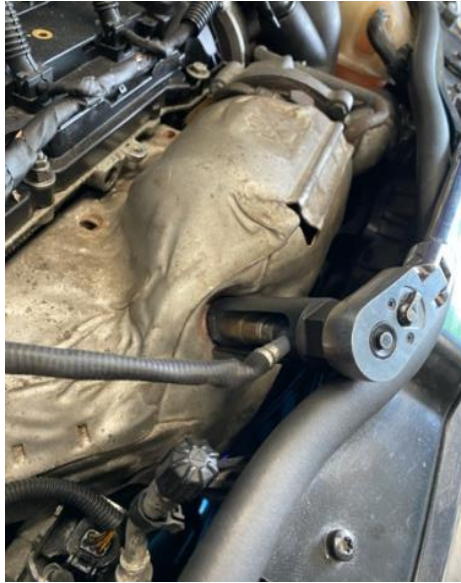


**AIRTEC**   
M O T O R S P O R T

**AIRTEC**   
M O T O R S P O R T

## Instructions:

1. Start by removing the lambda sensor from the downpipe. Then release the heat shield covering the turbo by removing the five 8mm bolts - three along the top and two lower down.



2. Remove the three 13mm nuts securing the downpipe to the turbo. You will also need to remove the three studs (highlighted with blue arrows), which you can do by tightening two nuts together on each stud and using the nut closest to the downpipe to unwind the stud.



- 3 You now need to remove the second lambda sensor from the downpipe, accessed from underneath the car.



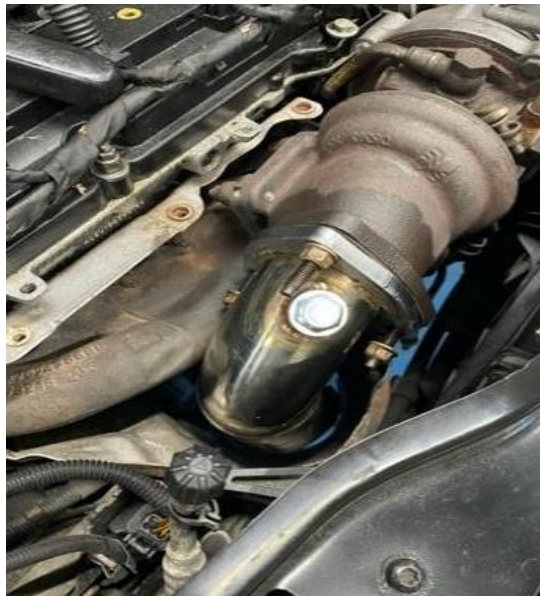
- 4 Now remove the two 13mm nuts (highlighted with blue arrows) securing each side of the original mounting bracket in place.



- 5 Loosen the exhaust clamp using a 15mm socket. The stock downpipe can then be removed by lifting it out from the top of the engine bay.



- 6 Install your new AIRTEC Motorsport downpipe from the top of the engine bay. Line up the three holes to the turbo and re-install the studs removed in Step 2 using the same method in reverse. Secure in place using the original 13mm nuts. **Ensure to re-install the original gasket between the turbo and the downpipe.**



- 7 Re-install the exhaust clamp removed in Step 5 and then install the AIRTEC Motorsport mounting bracket using the 13mm nut removed in Step 4

(highlighted with blue arrow). Align the bracket's slot to the side of the downpipe (highlighted with orange arrow) and install using the Allen Key bolt and washer supplied.



- 8 Finally re-install the lambda sensors and heat shield in reverse of Steps 1 and 3. Then check everything has been tightened correctly.

