

Ford Fiesta Mk8 ST Induction Pipe Fitting Instructions

Tools needed:

- Ratchet Set
- Flat-Bladed Screwdriver or Jubilee Hose Driver
- Trim removal tool
- 7mm Socket
- 10mm Socket
- 15mm Socket

Kit Includes:

- AIRTEC Motorsport induction pipe
- 1x support bracket
- 1x Pro Hoses silicone reducer
- 1x M6x10mm Hex Head bolt
- 1x M6 Pan Washer
- 2x jubilee clips

PLEASE THOROUGHLY READ THESE INSTRUCTIONS AND MAKE SURE YOU ARE FAMILIAR WITH THE STEPS BEFORE CARRYING THEM OUT

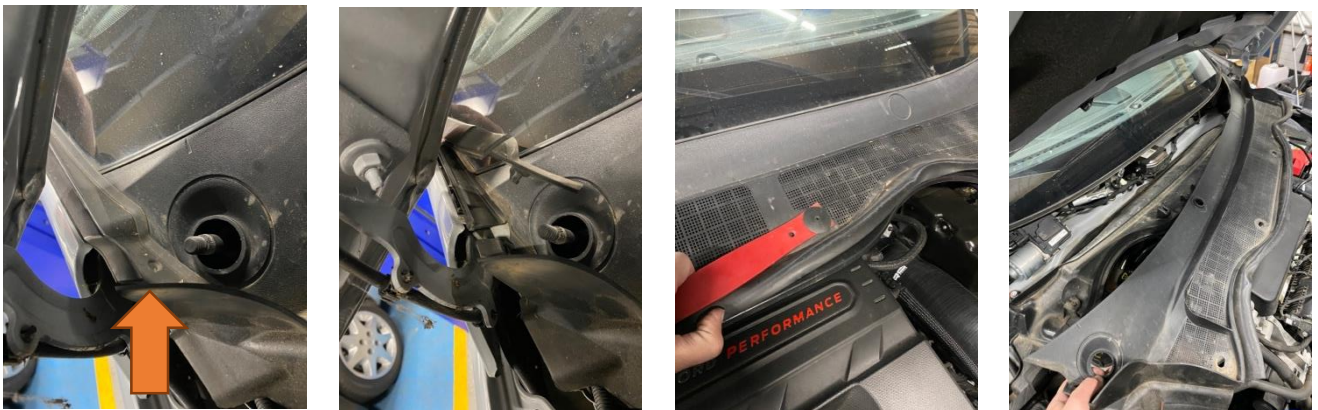


Instructions:

1. Start by removing the windscreen wipers. To do so, pull off the rubber caps located over the securing nuts and then remove them using a 15mm socket.



2. Now unclip the rubber edging along the edge of the scuttle panel from where it follows the corners of the windscreen. Once removed, release the five fixing clips positioned across the bottom of the scuttle panel with a trim removal tool.



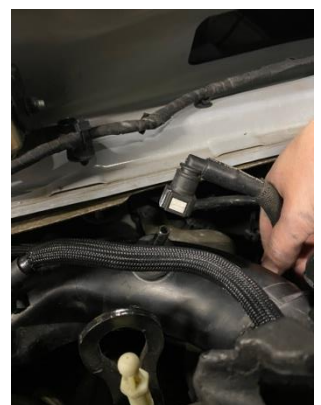
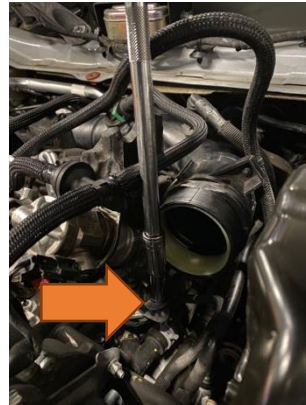
3. Remove the four 10mm bolts from the lower part of the scuttle panel, of which there are two situated in each corner, as shown. Then unclip the pipework attached to the panel above the battery and remove the scuttle panel from the car.



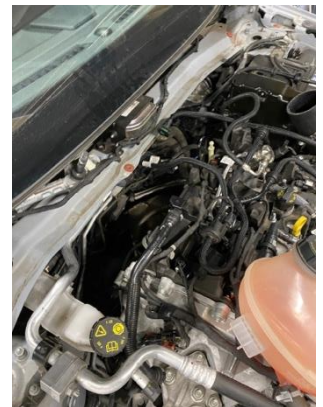
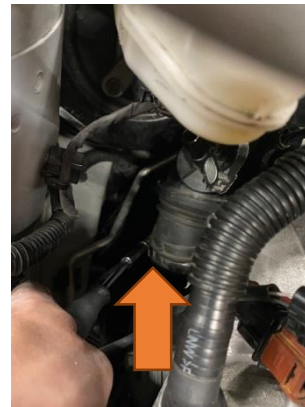
4. Now lift the header tank upwards and out of its mounting slot and pull the engine cover off from its rubber mounts so allow more access within the engine bay.



5. Remove the pipework from the original intake to gain access to the 10mm nut securing it in place. Remove the nut and unclip the breather hoses on the right-hand side of the pipework. For the white clip, you will need to push the tabs in to release it and the green clip needs to be removed from the connector to release it.



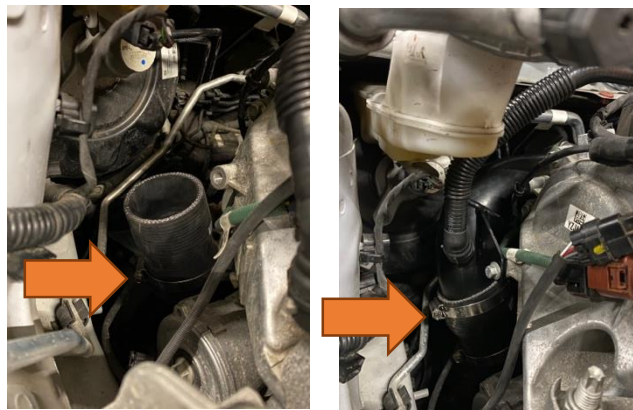
6. Now remove the 10mm bolt from the lower left-hand side of the pipework. After removal, release the lower breather hose by pulling the white clip back. Then you can loosen the jubilee clip located at the bottom to remove the pipework.



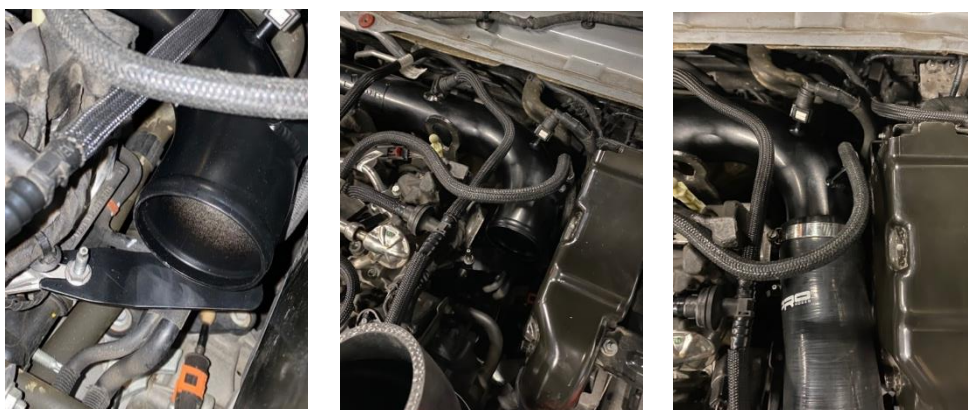
7. You will need to install the supplied support bracket using the M6x10mm Hex Bolt with washer onto your new AIRTEC Motorsport induction pipe. Make sure the bracket is installed at the correct angle, as shown. Don't fully tighten yet, as you will need some movement to align it correctly once in position.



8. Install the silicone reducer onto the turbo elbow and tighten securely. Now install the AIRTEC Motorsport induction pipe by fitting it into the silicone pipe with a supplied jubilee clip. You can then re-clip the breather hose to the lower pipework and reinstall the 10mm bolt to secure it onto the original mounting point.



9. You can now align the bracket to the threaded stud on the new induction pipe and reinstall with the original 10mm nut. Reconnect the two breather hose connections removed in Step 5 to the pipework and reinstall the silicone pipework.



10. Finally, check everything is tight and secure and refit the header tank, engine cover and scuttle panel in reverse of Steps 1 to 4.