

## MK4 Astra Coupe – Intercooler fitting instructions

### **You will need:**

Access to a vehicle lift or floor jack and axle stands.

Torx set.

Ratchet set and extensions.

Screw driver set

Drill with 7mm drill bit

Safety eyewear, footwear, gloves and protective clothing are also recommended.



1. Remove and de-gas air con radiator from water radiator using a 8mm socket (2 x torx bolts 1 each side of air con radiator)



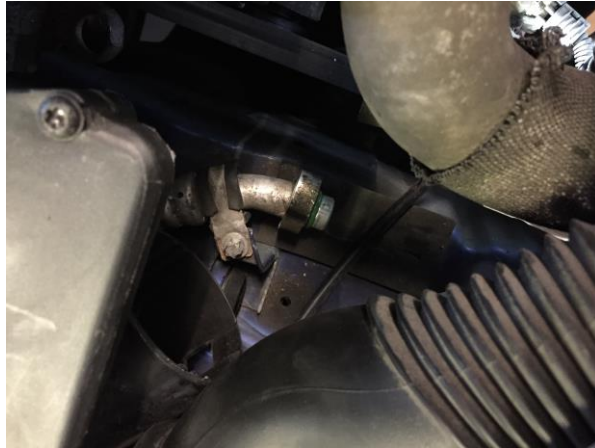
2. Undo aircon pipe work from aircon radiator using a 10mm socket (1 x torx bolt on each connector)



3. remove air con pipe work from air con pump using a 10mm socket (1 x torx bolt on connector)



4. Remove section of aircon pipe work from below air box using 10mm socket (1 x torx bolt on connector)



5. Undo radiator bracket using a 10mm socket. Pull the radiator forward about 10 mm

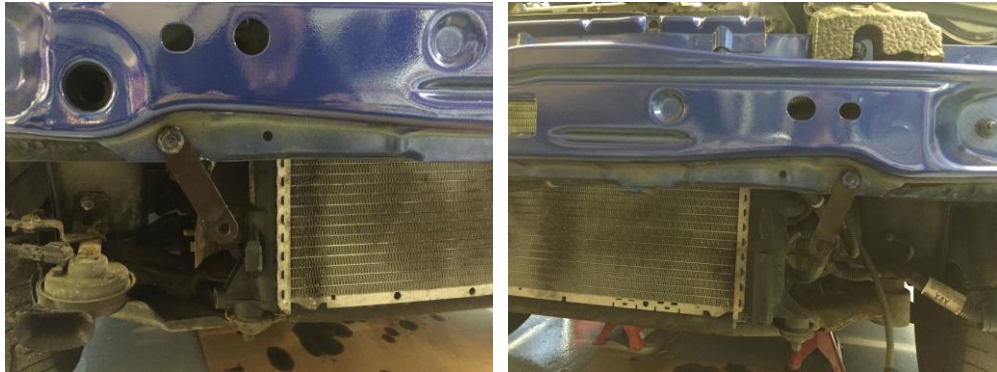


6. Remove aircon radiator bracket. Reattach radiator bracket back into their original positions. (2 torx bolts on each bracket each side of radiator)

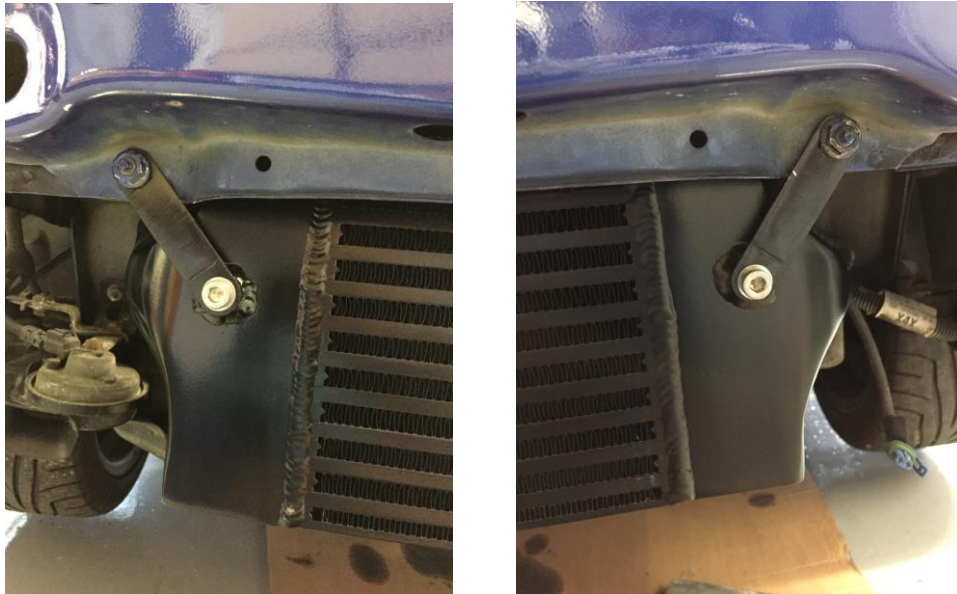




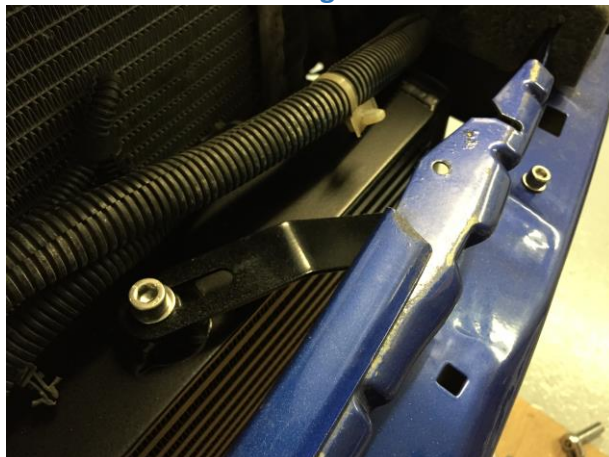
7. Undo 2 x 13mm nuts on crash bar and attach mounting brackets one on each side. Leave bolts finger tight to allow fitting intercooler more easily.



8. Slide intercooler in from below and attach m8 bolts one on each bracket these connect to m8 bosses either side of intercooler. Tighten m8 bolts and nuts holding mounting brackets.



9. Attach steady bracket on top of intercooler 1 m8 bolt on intercooler and 1 m6 bolt and nut in existing bolt hole on crash bar.



10. Attach 90 degree silicone joiner on each side of intercooler and tighten jubilees. Use lubricant to help with fitment.



11. Attach straight silicon connector to turbo and tighten jubilee. (If you intend to leave your air con pump attached you will need to trim 20mm of the driver side 45 degree silicone hose) connect aluminium boost pipe from turbo to intercooler and tighten jubilees.  
Slide aluminium boost pipe down from engine bay, Slide between battery tray and slam panel to connect to 90\* silicone coming of the intercooler and tighten jubilee.



12. Connect straight silicone connector to boost pipe and connect final aluminium boost pipe. Tighten all jubilees and put airflow sensor in the sensor boss on top boost pipe.



13. Before re attaching bumper trim adjustment brackets on fog lamp units as shown in picture. Check all bolts and jubilees are tight then reattach bumper.



**THANK YOU FOR JOINING  
THE COOLING REVOLUTION...**