

Corsa E Airtec Intercooler fitting instructions

1. Jack up the car and support using axle stands or use vehicle lift if available
2. Unbolt inner wheel arch, 2 x T20 torque screws 'each side'



3. Unbolt 2 x T20 screws in recessed holes under front of bumper
4. Unbolt 3 x T20 screws under front edge of bumper

5. Unplug fog lamps



6. Remove x 4 8mm bolts on top of bumper to slam panel

7. Pull each edge of bumper away from wing



8. Remove air temp sensor plug and remove bumper



9. Unclip and remove intercooler hoses, use flat blade screw driver and lever out if required, photo inside of hose clamp to show how it works



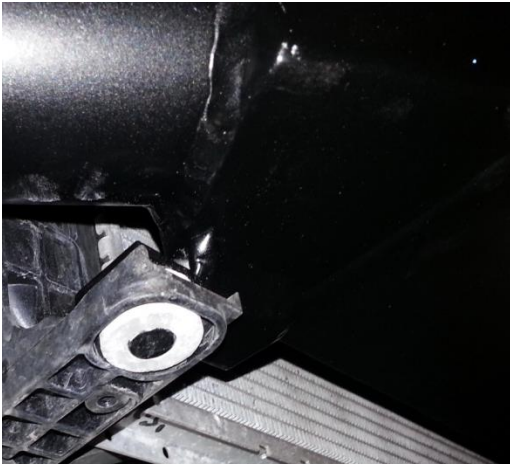
11. Undo the x 2 13mm bolts + drill out rivet holding on the bumper support



12. Remove 8mm Bolton right of the intercooler + squeeze clip on left side to release , lift intercooler out of pegs



12. Secure the new AIRTEC intercooler pegs into the grommets and mark top fixings against crash bar, remove intercooler and drill marked holes with 7mm drill, re-fit intercooler with bolts provided



13. Now fit silicon hoses and alloy hard pipes as shown below



14. Cut out each section of the bumper as shown in photo, then re-fit.

