

## VW Polo 1.8 TSI GTI front mount intercooler – Fitting instructions.



Access to a vehicle lift or floor jack and axle stands.

T30 & T25 Torx socket.

Ratchet set and extensions.

Screw driver set

Safety eyewear, footwear, gloves and protective clothing are also recommended.

1. Remove 2x T20 screws at the top of grill and remove.



2. Remove 4x T20 screws inner arches.



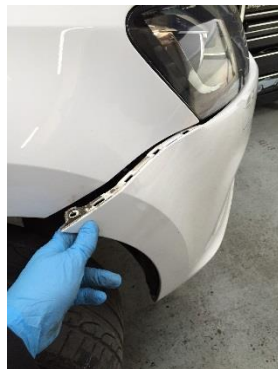
3. Remove 7x T20 screws under front bumper.
4. Remove engine under tray 7x T20.



**5. Remove boost pipes from intercooler**



**6. Un-clip side of bumpers.**



**7. Un-clip top of bumper/remove lower grills.**



**8. Remove head lights and remove 5x T30, 1x T20 then remove top metal supports.**



**9. Un-clip bumper underneath the head lights.**



**10. Remove bumper, unclip washer pipe if present, un-clip fog light bulbs.**

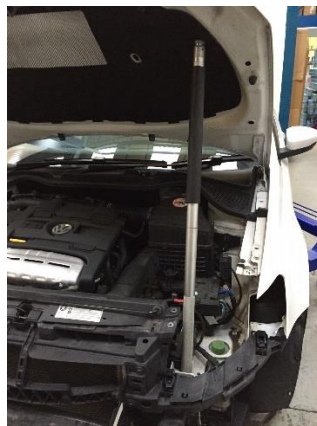
**11. Remove air temp sensor.**



**12. Remove crash bar 3x13mm bolts + 2x T30 bolts each side.**



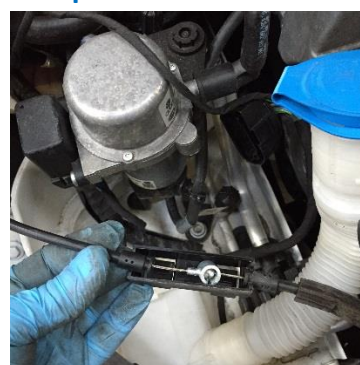
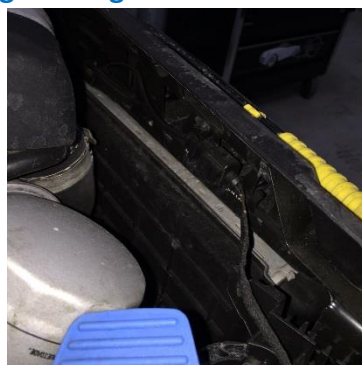
**13. Support bonnet and clip bonnet stay back into rad pack support**



**14. Un-clip washer bottle.**



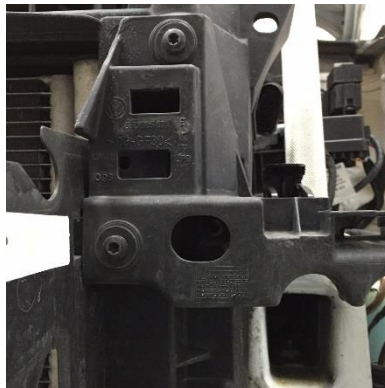
**15. Un-clip wiring running to bonnet catch and un-clip bonnet release as shown in photo**



**16. Remove air intake snorkel x2 T20.**



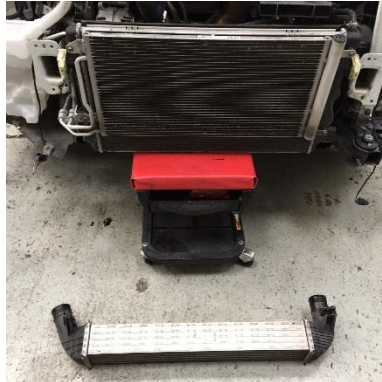
**17. Remove x2 T20 screw securing rad pack to crash panel.**



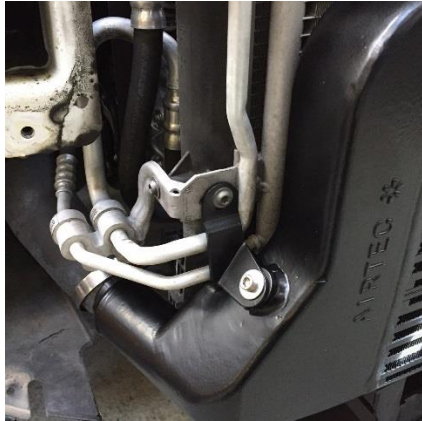
**18. Remove crash panel & support rad pack using a jack or similar**



19. Un-clip standard intercooler on the right hand side then un-hook left hand side.



20. Install new intercooler with brackets provided.



21. Build up in reverse of removal.



**THANK YOU FOR JOINING  
THE COOLING REVOLUTION...**