

Fiesta ST200 mk8 Intercooler Fitting Instructions

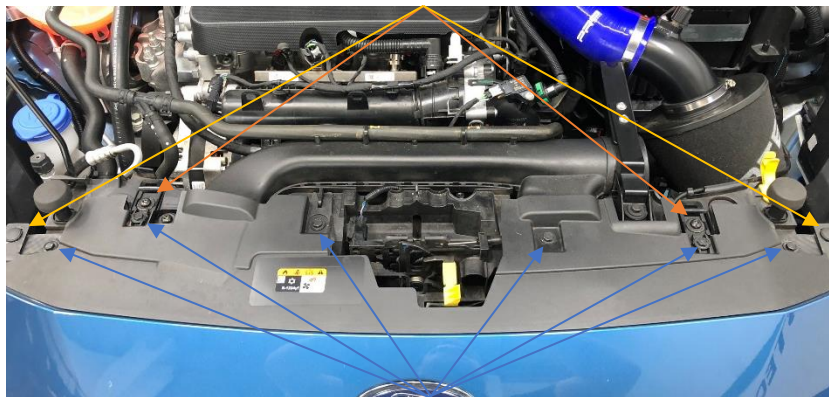
Tools needed:

- 10mm socket, extension & ratchet
- T30 torx bit
- Philips screwdriver
- Flat headed screwdriver
- Trim removal tool
- 5mm Allen Key or Socket
- Access to a vehicle lift or floor jack and axle stands

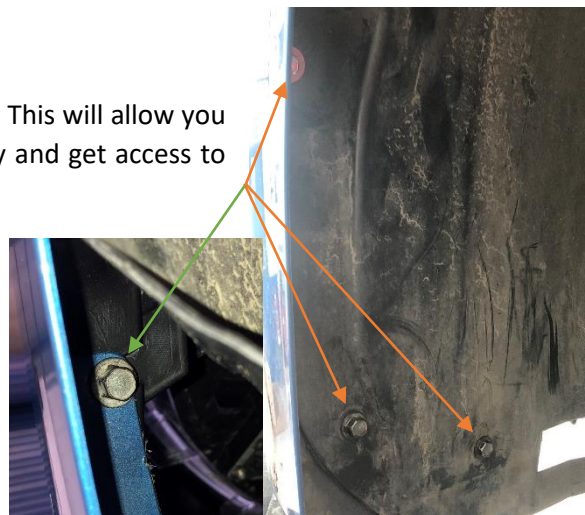


- Safety eyewear, footwear, gloves and protective clothing are recommend

1. Start by undoing the 6 x 10mm bolts, 2 x T30 torx bolts and remove the two plastic fittings using a trim tool or flat headed screwdriver that attach the top of the bumper to the slam panel.



2. In each wheel arch remove 3 x 10mm bolts. This will allow you to pull the wheel arch liner forward slightly and get access to remove the 10mm bolt shown below.



3. Underneath the front bumper remove the 3 x 10mm bolts



4. Remove the plastic clips that hold the tabs of the bumper to the under tray underneath the car by using a Philips screwdriver to undo the centre and then a trim tool or flat headed screwdriver to remove the fitting.



5. On top of the slam panel where the torx fittings were there is a plastic clip, this needs to be pushed up to release the clip and allow the top of the bumper to come forward, then using a second person starting from the edges of the bumper pull outwards to release the corners, unplug the wiring for the fog lights and then proceed to remove the bumper by pulling it out forwards and then store the bumper safely.



6. Undo the original intercooler by removing the 2 x 10mm bolts (retain these bolts as they will be used to fit the new AIRTEC intercooler.)
7. Undo the original hose clamps each side by using a flat headed screwdriver to pull up each side of the clip until it pops up and then you will be able to remove the hoses from the intercooler.



8. The original intercooler can now be removed by tilting the top of the intercooler forward and then pulling it out of the rubber mounts. If the rubber mount stays on the original intercooler pegs then remove these off and refit back into the holes.
9. Your new AIRTEC intercooler can now be fitted by reversing the removal of the old one and tilting the top of the intercooler forward and slotting it into the rubber mounts and pushing it in so that the pegs are securely in the mount.
10. Using the 2 supplied L brackets fit the long side part to the intercooler using the supplied M6 allen key bolts and washers, tighten it to the point where the bracket can still be moved within the slot positioning it so that the hole lines up with hole on the car and the bracket will sit as shown below. Reuse the 10mm bolt from the original intercooler to then fit the bracket to the car and then tighten.



11. Refit the hoses and push down the clip making sure the hose is secured to the new intercooler.
12. Refit the bumper in the reverse of removal, ensuring that when putting the sides of the bumper in that the tabs go the correct side and the bolt goes back in that was removed from under the wheel arch as this holds the sides of the bumper in and then when pushing it in make sure that the clips clip back into place on the slam panel.

