

AIRTEC Motorsport Rear Wing for Fiesta MK7 – Fitting guide



AIRTEC
MOTORSPORT

Fitting kit:

6 x M6 X 16 button head

4 x M6 X 12 button head

2 x M6 X 20 button head

16 x M6 pan washer

8 x M6 nylock nuts

1 x centre wing

2 x upright brackets (Sided)

2 x powder coated end plates (Sided)

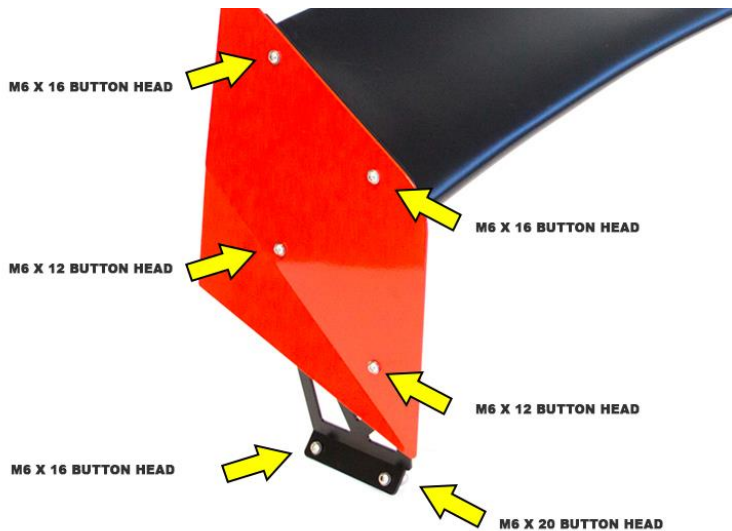
1 x wing drill templates

Please note: We endeavour to deliver an extremely high quality product but due to the handmade manufacturing process there is the possibility of minor imperfection(s) on the centre wing blade, prepping and painting is recommended before fitting.

WE RECOMMEND THAT THIS ITEM IS FITTED BY A CONFIDENT PROFESSIONAL TO PREVENT ANY DAMAGE TO THE VEHICLE, AIRTEC MOTORSPORT WILL NOT BE RESPONSIBLE FOR ANY DAMAGE OR MISS DRILLED HOLES.

Installation video can be found at our YouTube channel – AIRTEC Motorsport

1. Start by assembling the wing together, ensuring the bolts are fitted in the correct places, use the below diagram as a reference.



2. Secure top holes and end plates to centre wing using M6 X 16 button head bolts provided.

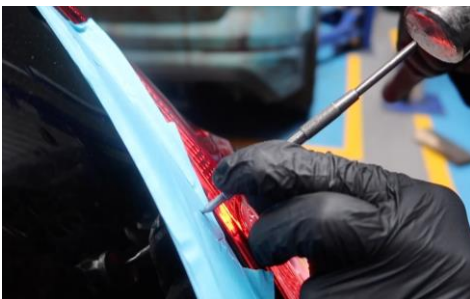


3. Secure middle holes to uprights using M6 X12 button head bolts provided



4. Carefully mark out drill holes using templates provided.

Please note, we recommend using a tap / punch to mark the holes before drilling, this will prevent slipping and damaging the boot lid when drilling, it is advised to use masking tape on the boot lid to prevent risk of scratching.

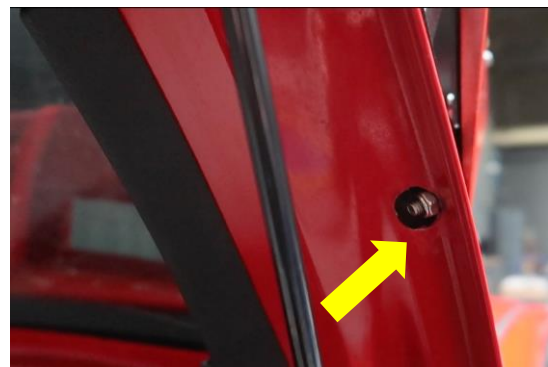


Installation video can be found at our YouTube channel – AIRTEC Motorsport

5. Once the hole locations are marked, drill the holes on the boot lid using a centre punch, 3mm drill bit and 6.2mm bit.



6. Now time to install your new wing, make sure to remove the masking tape / protection from the boot lid before installing the new AIRTEC wing – **At this point, you will need a second person to help with the install.** With one person holding the wing into place, secure the upright brackets onto the boot lid.



To gain access and tighten the nut on the double skin area of the boot lid, you will need to drill a hole using a 12 - 14mm drill bit.

7. Once both sides are in place, double check that all bolts are tight.



Installation video can be found at our YouTube channel – AIRTEC Motorsport