

## Audi S1 STAGE 2 Airtec front mount intercooler fitting instructions.



### **Tools Required:**

Access to a vehicle lift or floor jack and axle stands.

Drill.

3mm drill bit.

T20, T27, T30 Torx socket.

Ratchet and extensions.

Cross head screw driver.

Safety eyewear, footwear, gloves and protective clothing are also recommended.

1. Undo 3x T27 torx at the top of grill.



2. Remove 3x T20 torx on inner arch to bumper, 1x push clip inner arch to bumper (pull inner arch liner back).



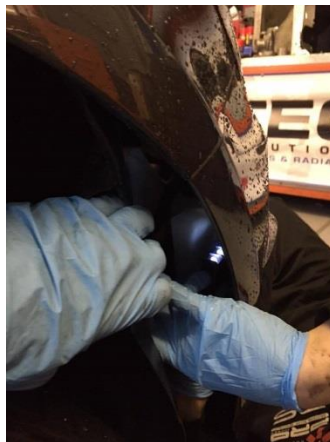
3. Remove under tray 9x T20.



**4. Remove 2x T20 from each side where inner arch connects to bumper.**



**5. Remove T30 bolt in each arch and remove bumper.**



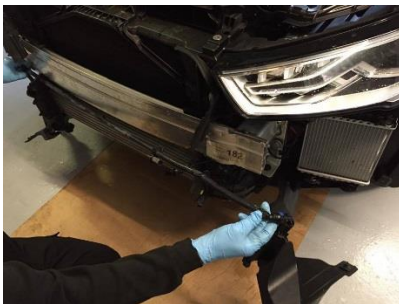
**6. Unclip small rad air guide.**



**7. Remove 3x T30 torx from headlight.**



**8. Remove 1x T30 torx below headlight to drop headlight washer cradle down.**



**9. Unclip washer jet & air temp sensor and move to the side.**



**10. Remove 7x T30 from rad pack to slam panel, remove horns from O/S.**



**11. Remove 4x T27 from slam panel & top of engine bay.**



**12. Unclip bonnet catch sensor clip x2 L/R from crash panel.**



**13. Bonnet release clip x3 L/R release from crash bar.**



**14. Remove sensor from plastic slam panel 1x T30**



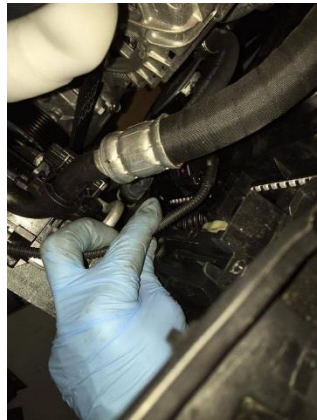
**15. Unbolt 3 bonnet catches and slide out & lay across engine 6x 10mm bolts.**



**16. Undo 2x torx from crash bar to rad and unclip sensor from plastic surround.**



**17. Unplug water temp sensor.**



**18. Remove plastic crash bar & support int/rad with axle stands.**



**19. Loosen jubilee clips securing boost pipes to original intercooler, remove original intercooler and store in a safe place.**



**20. Remove original washer jet pipe that runs along the top of original crash bar, one end unclips and the other end depending on the year of vehicle will possibly need to be cut off. Install new longer washer hose with supplied jubilee clips and cable ties (Please see photo below). When you install the new AIRTEC intercooler, please check the pipe does not get kinked or caught upon installation.**



**21. Before installation of the new AIRTEC intercooler, you will need to trim the plastic radiator surround.**

**With the plastic radiator surround in place, hold the AIRTEC intercooler approximately in position, this will give you a guide of where cutting is required.**



**22. Install AIRTEC intercooler into place securing using original crash bar fixings, fit original boost pipes onto your new AIRTEC intercooler.**



**23. Clip air temp sensor as shown**



**24. Once everything is installed and checked for clearance, re-fit bumper following instructions in reverse.**