

**Airtec intercooler fitting instructions for the AUDI A4/A6 Bi-Turbo  
(Please note this is a guide only, pictures are from A4/A5 diesel)**



**Tools needed:**

**T25, T27 Torx socket**

**10mm socket**

**Extensions & ratchets**

**Philips screw driver**

**5mm allen key**

**10mm spanner**

**Fitting kit:**

**4x M6 X 16 socket head bolts**

**2x M6 Small mudguard washers**

**2x M6 nylock nuts**

**4x M6 pan washers**

1. Undo 4x T27 torx securing top bumper slam panel



2. Undo 2x T25 securing top of bumper



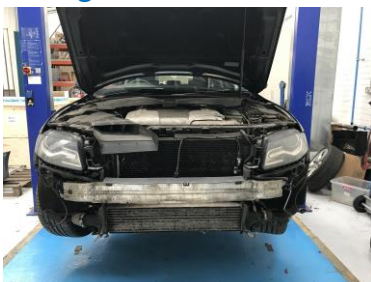
3. Undo 2x T25 torx securing inner arch to bumper



4. Undo 10mm bolt securing bumper to inner wing, then unclip side of bumper



5. Remove bumper making sure to unclip fog lights. Store in a safe place to prevent damage



6. Remove standard cooler by removing boost pipes. Undo 1x T25 on passenger side and unclip cooler.



7. Fit new airtec intercooler into place. The bottom sits into original mounting points and secure top of cooler to crash bar with supplied bracket.



8. Refit standard boost pipes



9. Re install bumper following instructions in reverse