

## AIRTEC intercooler fitting instructions for the Mazda 3 MPS (Pre-Facelift)



### Fitting kit:

- 3x M6 X 20 socket head
- 5x small mudguard washers
- 2x M6 nylocks
- 1x M8 pan washer
- 1x M8 nylock
- 1X 10mm m8 spacer
- 1x 35mm P clip
- 2x M6 x 20 socket head (For BOV)
- 2x M6 pan washers (For BOV)

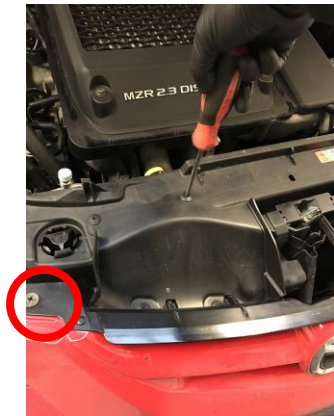
### Tools needed:

- Jubilee driver
- Phillips screw driver
- Flat blade screw driver
- 7mm, 10mm, 13mm socket
- Ratchet & selection of extension bars
- 5mm Allan key
- Trim tool

1. Undo 6x plastic screw fittings holding bumper to scuttle



2. Undo 2x Phillips screws holding top of bumper



3. Undo 2x plastic screw fittings holding inner arch to bumper and 3x 8mm bolts underneath



4. Remove engine under tray 7x 10mm bolts + 2x plastic push fit fittings



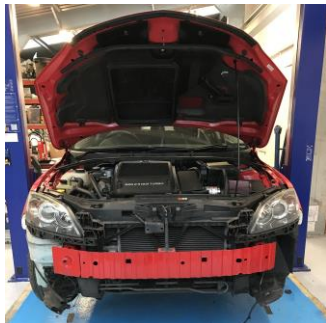
5. Remove 8mm bolt securing bumper to wing



6. Unclip side of bumper from wing



7. Remove front bumper. **Please note:** the 2 centre clips can be a bit tight to remove



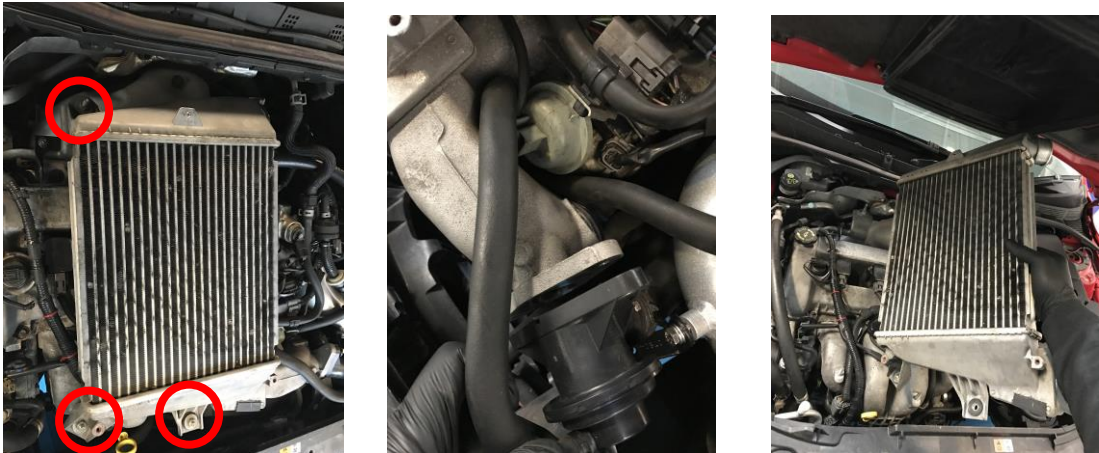
8. Make sure to unclip headlight washer pipe ambient air temp plug and fog lights



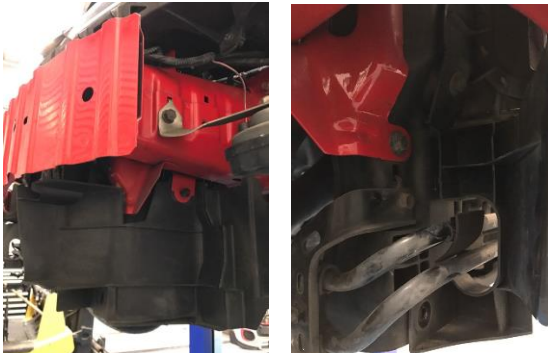
9. Remove standard intercooler cover 3x 10mm bolts to get to standard intercooler



10. Undo 3x 13mm nuts securing standard cooler.  
Undo front and rear boost pipes + standard BOV



11. Remove N/S & O/S plastic air guides by undoing 2x 10mm bolts



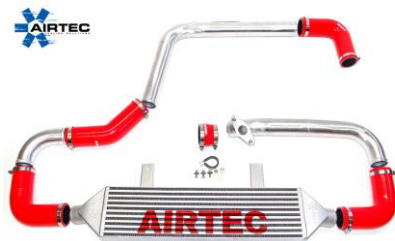
12. Remove O/S power steering cooler pipe bracket and secure pipes with P clip supplied and secure in top thread of original fixing bracket



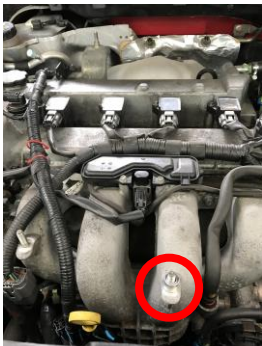
13. Loosely fit intercooler into place and secure with supplied M6 x 20 socket head bolts and washers



14. Start fitting silicon hoses, loosely fit silicon hoses as pictured



15. Fitting top crossover pipe, fit supplied spacer on 8mm stud at front of inlet plenum



**Fit 90 degree silicon reducer from turbo to crossover**



**45 degree silicon to bottom of crossover then 90 degree hard pipe to 90 degree silicon to intercooler**



**16. Fitting cold side pipework.**

**Fit straight silicon reducer to throttle body**



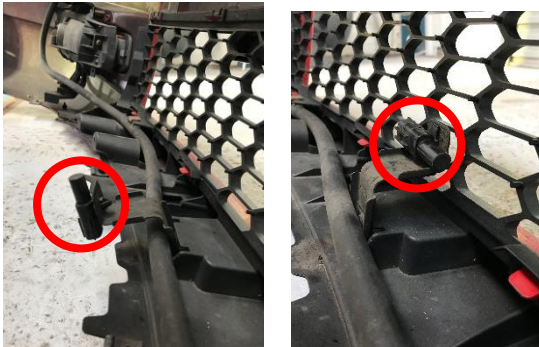
**Fit hard pipe with BOV outlet into silicon then 90 degree silicon connects into intercooler**



**NOTE: Make sure at least 50mm of clearance is left between cold side hard pipe and gear selector arm**



17. Once you are happy with all pipework clearance, tighten all jubilee clips then tighten intercooler into place.
18. Before re-fitting bumper, unbolt ambient air temp sensor and turn around so it is closer to the front of bumper, this is to ensure that it clears the intercooler



19. Re-fit bumper following instructions in reverse.



**THANK YOU FOR JOINING  
THE COOLING REVOLUTION...**