

# AIRTEC intercooler fitting instructions for Honda Civic

## Type R FK2



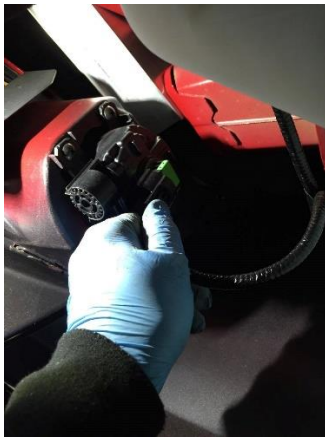
### Tools required:

- Access to vehicle lift or floor jack and axle stands.
- T25 torx socket
- T30 Torx socket
- Ratchet, extensions & sockets
- Cross head screw driver
- Dremel or similar tool for trimming
- Safety eyewear, footwear, gloves and protective clothing are recommended

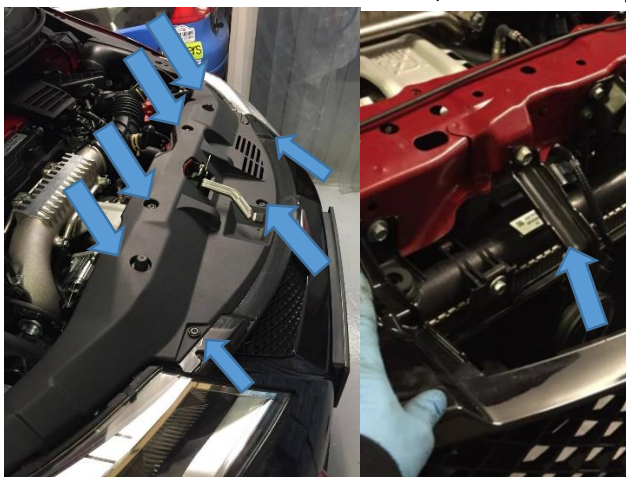
- Jack car up
- Remove flat floor – 34 push clips/ 2 phillips screw / 7 x 10mm bolts
- Remove inner arch 6 x phillips 10 x push clips



- Unclip fog wiring from rear of bumper

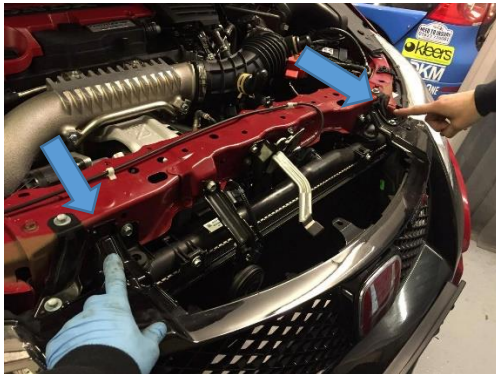


- Remove x7 push clips from plastic cover located on top of bumper
- Undo horn bracket and remove horn, store in a safe place



- Remove x2 bolts from top of bumper to slam panel. Remove bumper by pulling each side by headlight.

2 people are recommended when removing bumper. **Store in a safe place to prevent damage.**



- Remove L/R air guides from rad packs (clips on lower plastic under tray and rad)



- Remove intercooler brackets 2x 10mm bolt each side



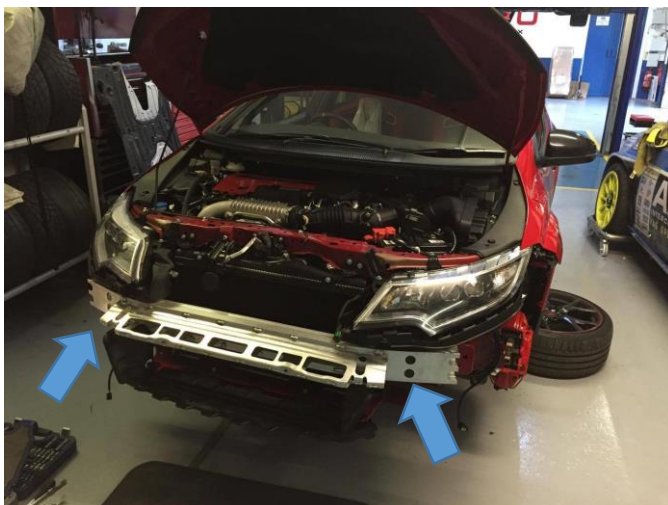
- Undo N/S boost pipe jubilee from turbo and x2 13mm bolts and remove standard intercooler



- Undo O/S boost pipe mounting brackets and remove cast boost pipe with connecting silicone. (For optional boost pipe kit remove entire boost pipe from throttle body and disconnect air flow sensor)



- Remove alloy slam panel 10 x 13mm bolts





- Install new Airtec intercooler as pictured (2 mounting brackets connecting to the radiator and 2 pins in existing location with steel connecting brackets)



Connect silicon hoses as pictured below for standard boost pipes or big boost pipe kit.

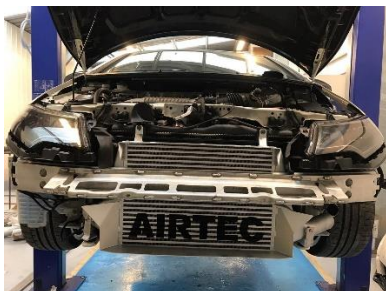


To join standard 57mm boost pipe

Pictured below is the optional 63mm hard pipe kit lay out. If running big boost pipes, don't forget to re-connect air flow sensor.



Re-install alloy crash bar and bumper following instructions in reverse.



**Please note:** When re-installing the horn we have noticed there are 2 styles. For the larger style please use stainless bracket as supplied in the kit pictured below or remove center of standard bracket and re attach in the standard location with a slight bend, this will fit as pictured below.



**LARGER STYLE**



**SMALLER STYLE**

**Please note:** when re-installing bumper you will need to trim lower plastic under tray as pictured below.

**This will not affect the performance on your car or fitting of the rear under tray.**



**THANK YOU FOR JOINING  
THE COOLING REVOLUTION...**