

FORD RANGER INTERCOOLER FITTING INSTRUCTIONS

Tools needed:

- Trim removal tool or flat bladed screwdriver
- Socket set with a long extension
- Cross headed screwdriver
- T25 torx bit

Kit Includes:

- AIRTEC MOTORSPORT INTERCOOLER
- TEMPERATURE SENSOR RELOCATION BRACKET
- M6 x 12 HEX HEAD BOLTS
- M6 WASHER

PLEASE THOROUGHLY READ THESE INSTRUCTIONS AND MAKE SURE YOU ARE FAMILIAR WITH THE STEPS BEFORE CARRYING THEM OUT



Please note that there may be variations in the process of removing the bumper on your ranger if fitted with a different bumper/grill or arches to the one pictured.

Instructions

1. Open the bonnet and secure.
2. Remove top trim panel by removing the x5 clips on top of the panel and then on the back of the panel there are 6 clips your need to push in to release the panel. Set it aside.



3. Undo the 2 x 10mm bolts that attach the top of the grill to the headlights and then using a long extension undo the 10mm holding the bottom of the grill in on both sides.



4. Remove lower bull bar if fitted and then under the truck remove the 10mm bolts where the bumper attaches. There are 9 of these.



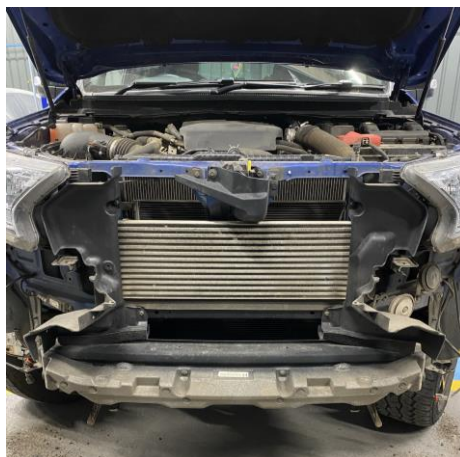
5. Remove the 4 x Philips holding the edges of the bumper to the arch liner each side.



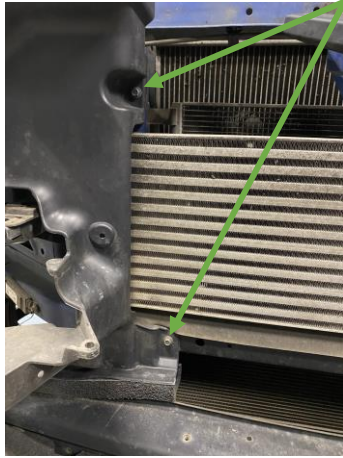
6. Undo the 8mm bolt holding the bumper to the front wing on both sides.



7. Pull the corners of the bumper to release and then with a second person hold the bumper whilst they unclip any electrical plugs.



8. Remove the plastic air guides from the car by undoing the 2 x 8mm bolts holding in each side, on the right hand side you will also need to remove the ambient air temperature sensor. Do this by using a trim tool or flat bladed screwdriver.



9. Remove the MAP sensor from the intercooler by undoing the T25 torx holding the sensor in.



10. Undo the jubilees holding the boost pipes onto the intercooler and then pull the hoses back off of the intercooler.



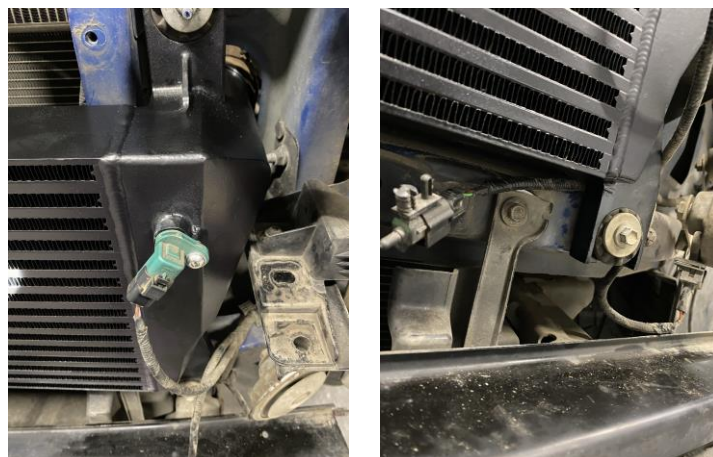
11. Remove the intercooler by undoing the 4 x 10mm, 2 are bolts and 2 are nuts. You will need a deep socket for the top nuts.



12. Remove the rubber bushes from the original intercooler and fit it to your new intercooler.



13. Install the intercooler to the truck reusing the original fixings and insert the MAP sensor and tighten using the original torx fixing. Before installing run the temperature sensor down and behind the lower right hand mount off of the intercooler.



14. Take the provided bracket and bolt it to the lower hole on the right hand side of the truck with the provided M6 bolt and washer. Insert your temperature sensor into the bracket.



15. Reinstall the boost hoses back onto the intercooler and tighten the jubilees. Now reinstall the bumper in the reverse of the removal

