

BMW M135i Intercooler Fitting Instructions

Tools needed:

- Socket Set
- Trim Tool
- Drill
- 8mm Drill Bit
- Flat Bladed Screwdriver
- Torx Set

Kit Includes:

- AIRTEC Intercooler
- Intercooler fitting kit



Instructions:

1. Start by removing the 8mm bolts across the underneath of the front bumper.



2. Remove the front half of the arch liner out by removing the 8mm bolts holding the arch liner in place as this will make it much easier to access the x2 8mm bolts securing bumper to the wing.



3. Peel back the weather strip across the top of the bumper and remove x6 T30 Torx bolts.



4. You can now remove the front bumper but before removal make sure to disconnect the wiring harness and sensors.



5. Remove x11 8mm bolts from the undertray to be able to gain access to the intercooler.



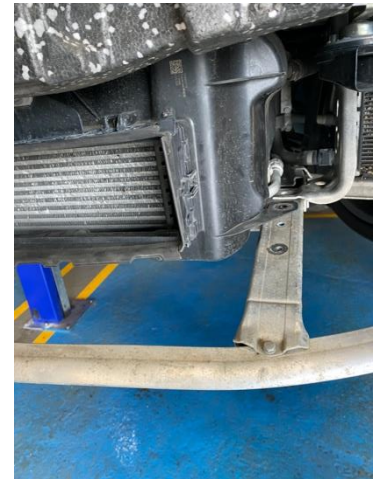
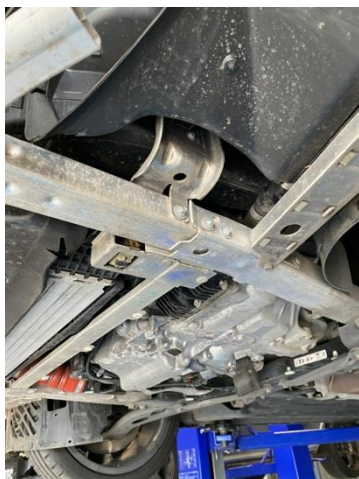
6. Undo the T25 Torx screw using an extension then use a trim tool to be able to remove the air guide fully.



7. Now you will have access to the brake cooling guides, start by removing the T25 Torx screw then slide the guide up and unclip the guide to be able to remove as this will need to be removed in two separate pieces.



8. Remove x3 8mm bolts from either side of the lower brace then x2 T25 Torx screws on top of the brace from either side then you will be able to remove the brace.



9. Disconnect the boost pipes by levering a flat bladed screwdriver underneath the clip and apply pressure until they click out of place. Also using a trim tool unclip the hose attached to the front of the intercooler.



10. Drill out x6 rivets holding the intercooler brace in place, you can then unclip the intercooler tabs and lower down the intercooler and brace then remove.



11. You can now remove the stock intercooler and remove the intercooler tab insert as these will not be re used.



12. Install your new intercooler in place by reusing the x2 T25 Torx screws from the brace. You can now reinstall everything in reverse of removal.

