

Hyundai i20N induction kit fitting instructions

Tools needed:

- Socket set
- Allen Keys
- Hose clamp pliers
- Jubilee flexi-driver or flat bladed screwdriver

Kit includes:

- 1x induction pipe
- 1x heat shield
- 2x Pro Hoses silicone reducers
- 1x 80mm trumpet
- 1x air filter
- 3x 90mm jubilee clips
- 1x 70mm jubilee clip
- 1x induction pipe bracket
- 1x wiring harness bracket
- 1x M6x12mm Hex Head bolt
- 2x M6x16mm Hex Head bolts
- 3x M6 washers
- 3x M5x12mm Cap Head bolts (not shown)
- 3x M5 Nyloc nuts (not shown)
- 6x M5 washers (not shown)

PLEASE THOROUGHLY READ THESE INSTRUCTIONS AND MAKE SURE YOU ARE FAMILIAR WITH THE STEPS BEFORE CARRYING THEM OUT



Instructions

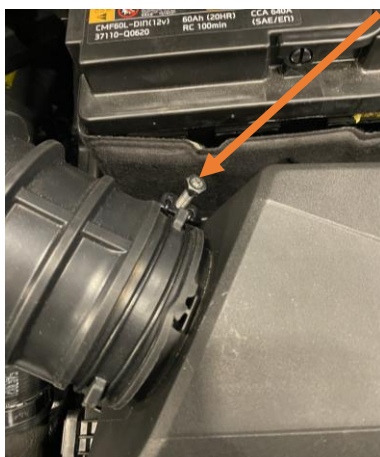
1. Open bonnet and secure.



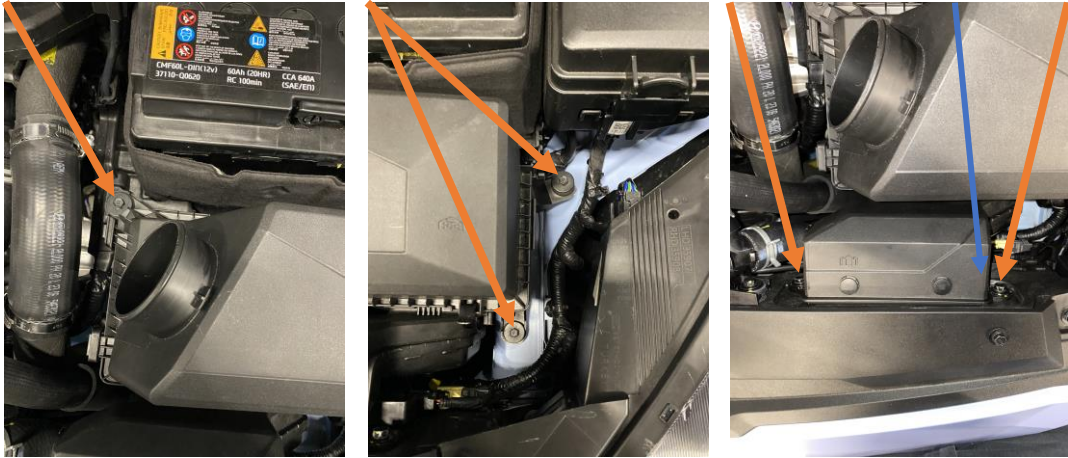
2. Undo the two hose clamps highlighted below using the pliers and then disconnect the hoses.



3. Undo the two 10mm hose clips highlighted and remove from the car.



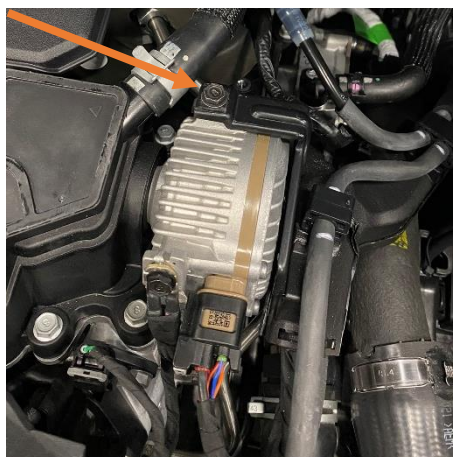
4. Undo the three 10mm bolts holding the air box in place and the two 10mm bolts holding the air guide in place at the front. There is also a wiring loom hidden from sight that needs to be unclipped on the bottom of this guide. You can then remove the assembly from the car.



5. With the air box removed you can now begin installing the replacement induction pipe. Firstly, install the silicone reducer onto the turbo elbow with the 70mm jubilee clip supplied.



6. Undo the 10mm bolt highlighted and place the induction pipe bracket over the hole and reinstall the bolt, but do not fully tighten yet to allow movement.



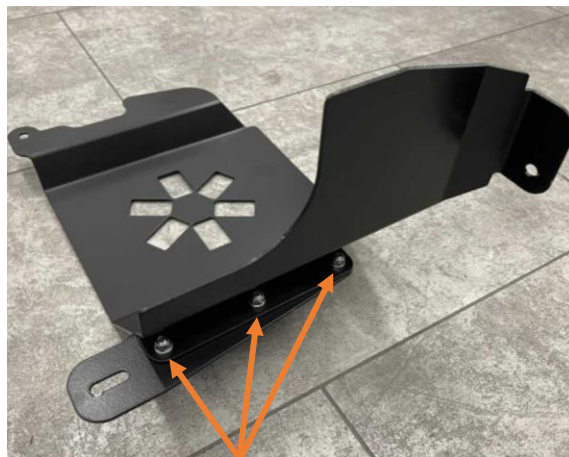
7. Fit the new induction pipe in place by sliding it into the silicone joiner fitted in Step 5 with a 90mm jubilee clip supplied. Loosely attach the bracket fitted in Step 6 to the pipe using the M6x12mm bolt and washer supplied, but do not fully tighten the jubilee clip or bolt yet.



8. Next, fit the new wiring harness bracket using the original 10mm bolt located in the front panel, as shown. Use the bracket to attach the wiring loom clip disconnected in Step 4.



9. Now assemble the heat shield using the M5 nuts, bolts and washers supplied, as shown.



10. Install the induction shield using the original bolt in the front panel and the two M6x16mm Hex Head bolts with washers supplied, as shown.



11. Install the filter onto the trumpet and then slide it into the second silicone connector supplied. Attach to the new induction pipe and fully tighten both the jubilee clips.



12. Once happy with the overall fitment and alignment of everything, fully tighten the rear jubilee clips and the bolts holding the bracket in place.