

BMW M2 INDUCTION KIT FITTING INSTRUCTIONS

Tools needed:

- 6mm and 7mm flexidriver or socket
- Socket set including a T20 torx bit

Kit Includes:

- AIRTEC Motorsport induction hard pipe
- AIRTEC Motorsport air filter
- AIRTEC Motorsport airbox with lid
- 1 x Airbox push fitting
- 1 x M8 spacer
- 1 x M6 x 16mm cap head bolt
- 1 x M6 penny washer
- 6 x M6 x 16mm dome head bolts
- 6 x M6 washers
- 1 x M8 x 16mm cap head bolt
- 1 x M8 x 40mm cap head bolt
- 1 x M8 Nut
- 3 x M8 washers
- 2 x M4 x 12mm cap head bolts
- 2 x M4 washers

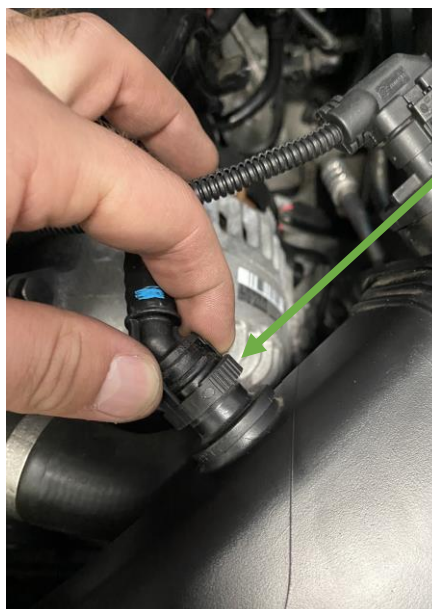
PLEASE THOROUGHLY READ THESE INSTRUCTIONS AND MAKE SURE YOU ARE FAMILIAR WITH THE STEPS BEFORE CARRYING THEM OUT

Instructions:

1. Firstly open the bonnet and make sure it is secure.
2. Remove these 4 x 13mm bolts and put the brace aside.



3. Unclip the vacuum pipe by squeezing together the two sides that are ribbed as shown below and then pull the pipe back.



4. Remove the MAF sensor by first unclipping the plug, undo the 2 x T20 bolts holding it in and put it safely aside.



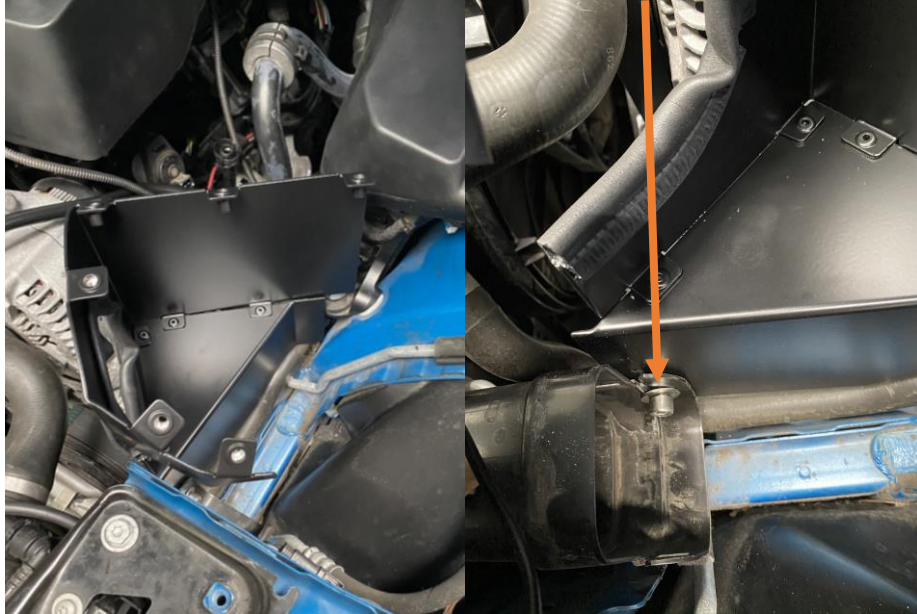
5. Loosen the jubilee clip holding the original induction pipe to the stock hose using a 6mm socket or flat bladed screwdriver.



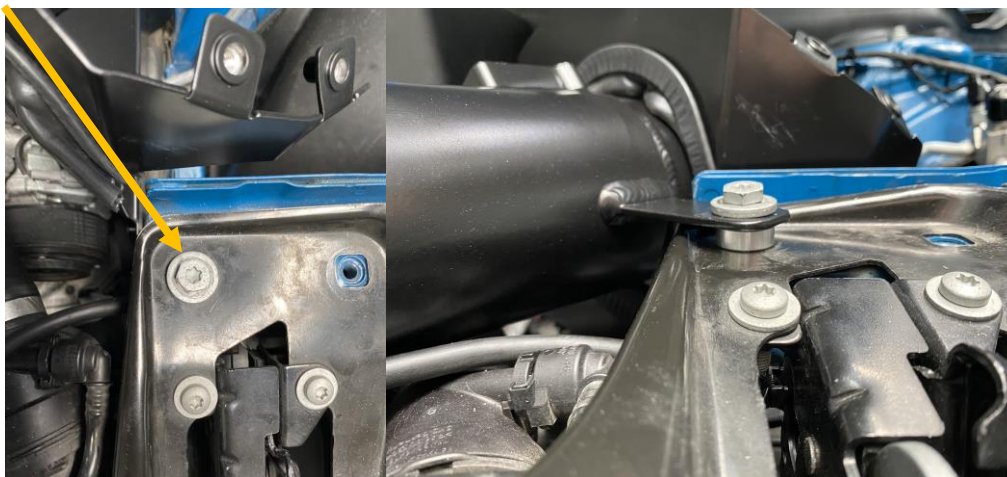
6. Pull up on the plastic bracket securing the plastic pipe to the front of the car to release the rubber fitting and then remove the rubber grommet and insert into your new AIRTEC motorsport hard pipe.



7. Pull up on the airbox to release it from its rubber mounting and then remove the hardpipe and airbox from the car as a whole.
8. Insert the base to your new airbox into the car, it will push into the original rubber mount at the back and is secured at the front using an M8 x 16 cap head bolt and washer to attach it to the original air feed into the car.



9. Remove the bolt pictured using a 13mm socket and place supplied spacer on top of this hole before fitting your new AIRTEC motorsport hardpipe. Fit the pipe by guiding the filter end in through the hole in your new airbox, push the other end into the original hose and then fix into position by reusing the original bolt to hold the pipe and tighten original jubilee clip. (Do not fully tighten at this stage.)



10. Clip the vacuum pipe back on by pushing in until you can hear an audible click and ensure it is secure. Reinstall the MAF sensor using the supplied M4 x 16 cap head bolts with washers and reattach the plug.



11. Install your new AIRTEC motorsport filter with supplied jubilee clip and tighten.



12. Install the airbox lid using the supplied M6 x 16mm dome head bolts with washers, start by threading in all the bolts loosely and then once happy with position proceed to tighten them down. Finally use the supplied M8 x 40 cap head bolt, washers and nut to attach the air box lid to the original rubber mount as shown.



13. Reinstall the brace removed at the start and when happy with the position of the hardpipe fully tighten the original jubilee and bolt to firmly secure the induction kit.

